

MINIDUE OTTONE

Compact volumetric dosing pump



- ✓ self-priming, with injection valve that also acts as a non-return valve
- ✓ fully mechanical operation
- ✓ precise dosage, effective treatment with AcquaSIL 2/15®

CHARACTERISTICS

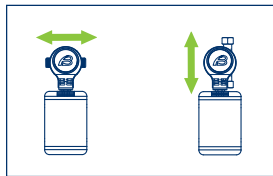
Range of new mechanical volumetric dosing pumps for dosing AcquaSIL 2/15®, anti-corrosion anti-scale product, pump equipped with horizontal or vertical connection.

MiniDUE OTTONE is made with a brass attachment plate and a plastic pump body; in the MiniDUE version it is supplied with nuts and tangs for hydraulic installation;

AcquaSIL 2/15® product is supplied in disposable bags of gr. 250 or of 1 kg, to be connected directly to the pump body or to be used with the remote kit connection provided with the standard product.

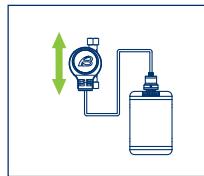
MiniDUE OTTONE with the dosage of products based on polyphosphates, even at very low concentrations, will prevent the formation of limescale and corrosion in the hot water distribution lines.

For maintenance and sanitation interventions, please contact the industry professionals .



Version with bag attached to the pump body

PM002S PM003/2S



Version with remote bag

PM003/2S



Brass outer F



First AcquaSIL 2/15® refill and remote kit supplied

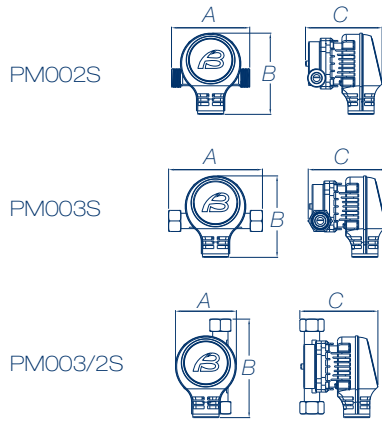
WHAT WE SUPPLY

MiniDUE OTTONE is placed inside a smooth cardboard box.

The standard supply includes: MiniDUE OTTONE dosing pump, 250 g AcquaSIL 2/15® refill, remote installation kit, instructions manual.

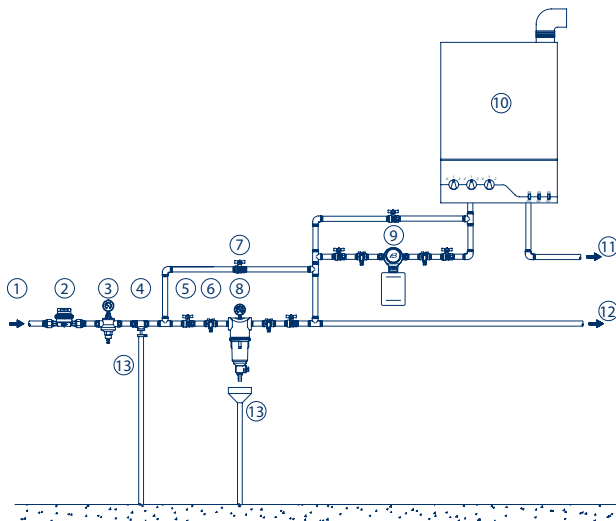
Code	Connections	Flow rate m ³ /h	Min/max pressure bar	Pieces per package	Kg. per package
PM002S	1/2" M	1,2	1,5 - 10	24	18
PM003S	1/2" F	1,2	1,5 - 10	24	20,4
PM003/2S	1/2" F	1,2	1,5 - 10	24	20,4

OVERALL DIMENSIONS EXPRESSED IN MM



Code	Width - A	Height - B	Depth - C
PM002S	90	92	88
PM003S	108	92	89
PM003/2S	70	112	90

EXAMPLE OF INSTALLATION SCHEME



Legend

1. Raw water inlet;
2. General counter;
3. Pressure reducer;
4. Disconnect;
5. Shut-off valve;
6. Sampling tap;
7. By-pass valve;
8. Filter;
9. MiniDUE dosing pump;
10. Boiler;
11. Hot water outlet;
12. Cold water outlet;
13. Discharge.

GUIDELINES FOR CORRECT MAINTENANCE

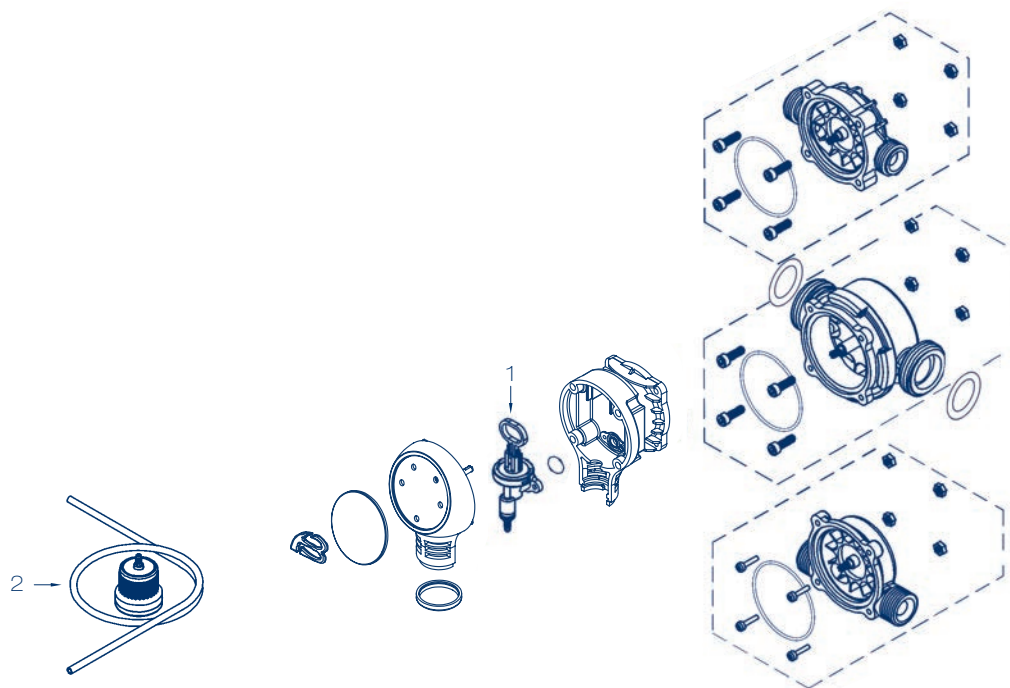


The correct operation and duration of the equipment over time depend on correct installation, proper use and methodical application of the maintenance instructions supplied.

First year	Second year	Third year	Fourth year	Fifth year
CHAMBER ASSEMBLY Clean or lubricate with food grade silicone	CHAMBER ASSEMBLY Clean or lubricate with food grade silicone	CHAMBER ASSEMBLY Replace	CHAMBER ASSEMBLY Clean or lubricate with food grade silicone	CHAMBER ASSEMBLY Clean or lubricate with food grade silicone
SANITATION INTERVENTION Annually or for periods of inactivity longer than 30 days	SANITATION INTERVENTION Annually or for periods of inactivity longer than 30 days	SANITATION INTERVENTION Annually or for periods of inactivity longer than 30 days	SANITATION INTERVENTION Annually or for periods of inactivity longer than 30 days	SANITATION INTERVENTION Annually or for periods of inactivity longer than 30 days

RECOMMENDED SPARE PARTS

Pos.	Code	Description	Q.ty
1	99006021	Dosing chamber assembly 1/2"	1
2	99006020	Remote kit assembly	1



CONSUMABLES AND MAINTENANCE

Code	Description	Q.ty
48170005	KIT SANITY Sanitizing product for sanitation processes 1 Kg. can - 4 Kg. pack	1
48105016	PEROXIDE ANALYSIS KIT for KIT SANITY The kit allows you to check whether the sanitation was done correctly	1
48500007	Food grade silicone suitable for the lubrication of mechanical parts and o.rings	1
PC100	AcquaSIL 2/15® - anti-scale anti-corrosion product Box with n° 4 refill (250 gr. / each)	1
PC104	AcquaSIL 2/15® - anti-scale anti-corrosion product Box with n° 1 refill (1 Kg.)	1