

MINIDUE 360

Compact volumetric dosing pump



- ✓ self-priming, with injection valve that also acts as a non-return valve
- ✓ universal 'dima' attachment
- ✓ fully mechanical operation
- ✓ precise dosage, effective treatment with AcquaSIL 2/15®

CHARACTERISTICS

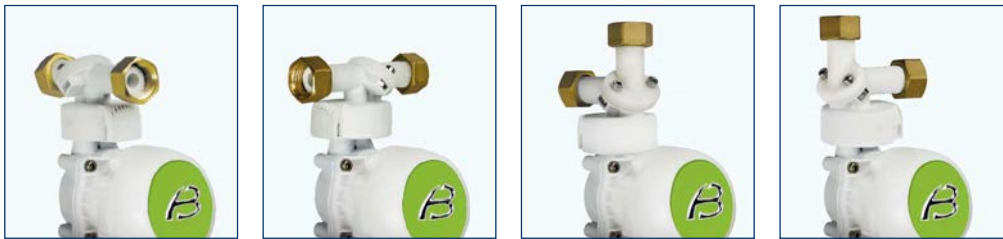
MiniDUE 360 is the new mechanical volumetric dosing pump for dosing AcquaSIL 2 / 15®, an anticorrosive anti-scale product, with a revolutionary template fixing designed to satisfy any installations need and simplifying and reducing installation times.

MiniDUE 360 is made with body and connection plate in plastic material; template fixing parts in plastic material with brass ring nuts and nuts.

AcquaSIL 2/15® product is supplied in disposable bags of gr. 250 or of 1 kg, to be connected directly to the pump body or to be used with the remote kit connection provided with the standard product.

MiniDUE 360 with the dosing of polyphosphate-based products, even at very low concentrations, will prevent the formation of limescale and corrosion in the hot water distribution lines.

For maintenance and sanitation interventions, please contact the industry professionals.



New dima attachment, versatility of installation in any configuration



First AcquaSIL 2/15® refill and remote kit supplied

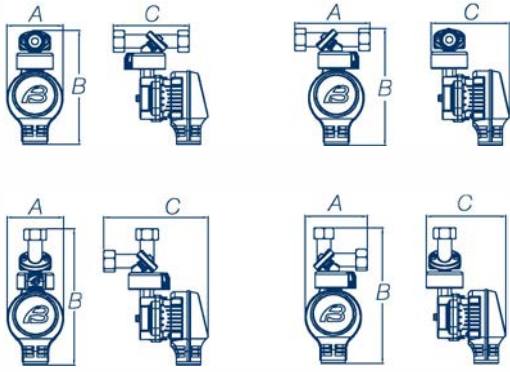
WHAT WE SUPPLY

MiniDUE 360 is placed inside a smooth cardboard box.

The standard supply includes: MiniDUE 360 dosing pump, 250 g AcquaSIL 2/15® refill, remote installation kit, DIMA 360 swivelling connection ("template" brass connection for quick & easy installation), and instructions manual.

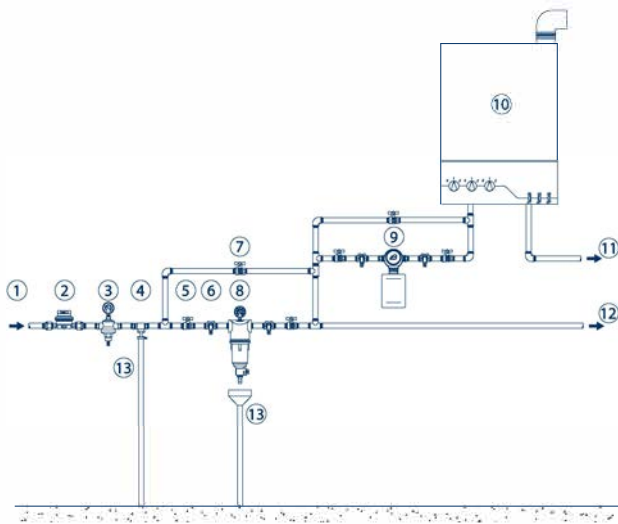
Code	Connections	Flow rate m ³ /h	Min/max pressure bar	Pieces per package	Kg. per package
PM007S	½" F	0,8	1,5 - 10	24	21,0

OVERALL DIMENSIONS EXPRESSED IN MM



Code	Weidth - A	Height - B	Depth - C
PM007S	70	144	94
	94	144	98
	70	171	101
	77	171	98

EXAMPLE OF INSTALLATION SCHEME



Legend

1. Raw water inlet;
2. General counter;
3. Pressure reducer;
4. Disconnect;
5. Shut-off valve;
6. Sampling tap;
7. By-pass valve;
8. Filter;
9. MiniDUE dosing pump;
10. Boiler;
11. Hot water outlet;
12. Cold water outlet;
13. Discharge.

GUIDELINES FOR CORRECT MAINTENANCE

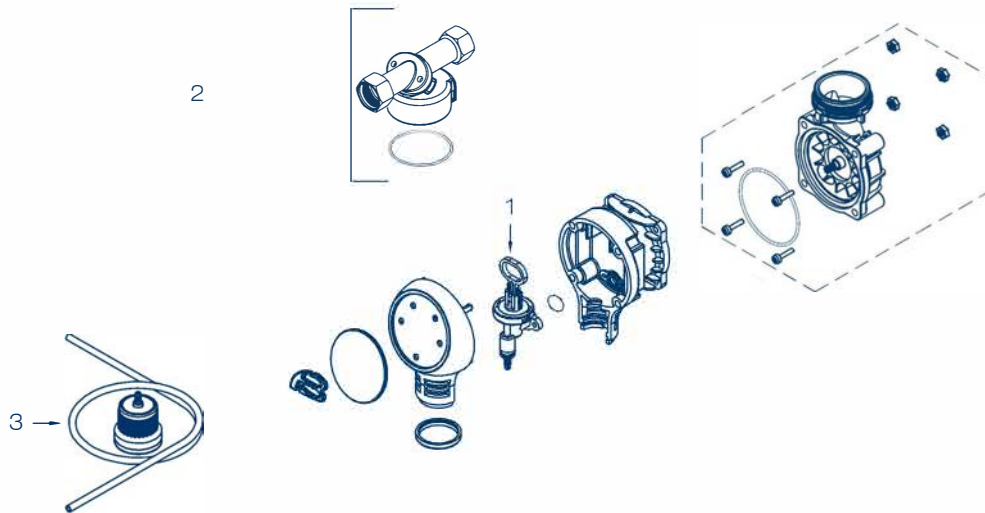


The correct operation and duration of the equipment over time depend on correct installation, proper use and methodical application of the maintenance instructions supplied.

First year	Second year	Third year	Fourth year	Fifth year
CHAMBER ASSEMBLY Clean or lubricate with food grade silicone	CHAMBER ASSEMBLY Clean or lubricate with food grade silicone	CHAMBER ASSEMBLY Replace	CHAMBER ASSEMBLY Clean or lubricate with food grade silicone	CHAMBER ASSEMBLY Clean or lubricate with food grade silicone
SANITATION INTERVENTION Annually or for periods of inactivity longer than 30 days	SANITATION INTERVENTION Annually or for periods of inactivity longer than 30 days	SANITATION INTERVENTION Annually or for periods of inactivity longer than 30 days	SANITATION INTERVENTION Annually or for periods of inactivity longer than 30 days	SANITATION INTERVENTION Annually or for periods of inactivity longer than 30 days

RECOMMENDED SPARE PARTS

Pos.	Code	Description	Q.ty
1	99006021	Dosing chamber assembly 1/2"	1
2	99006006	"Dima 360" connection assembly	1
3	99006020	Remote kit assembly	1



CONSUMABLES AND MAINTENANCE

Code	Description	Q.ty
48170005	KIT SANITY Sanitizing product for sanitation processes 1 Kg. can - 4 Kg. pack	1
48105016	PEROXIDE ANALYSIS KIT for KIT SANITY The kit allows you to check whether the sanitation was done correctly	1
48500007	Food grade silicone suitable for the lubrication of mechanical parts and o.rings	1
PC100	AcquaSIL 2/15® - anti-scale anti-corrosion product Box with n° 4 refill (250 gr. / each)	1
PC104	AcquaSIL 2/15® - anti-scale anti-corrosion product Box with n° 1 refill (1 Kg.)	1