

# MINIDUE 3/4

Compact volumetric dosing pump



- ✓ self-priming, with injection valve that also acts as a valve of no return
- ✓ suitable for installation upstream of the treatment systems of the entire sanitary line

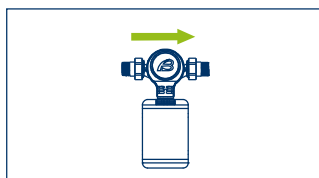
## CHARACTERISTICS

Range of new mechanical volumetric dosing pumps for dosing AcquaSIL 2/15®, anti-corrosion anti-scale product, pump equipped with horizontal or vertical connection. MiniDUE 3/4 is made with a brass attachment plate and a plastic pump body; in the MiniDUE version it is supplied with nuts and tangs for hydraulic installation;

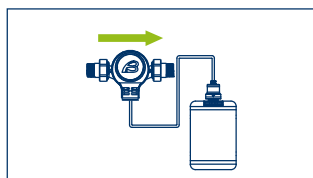
AcquaSIL 2/15® product is supplied in disposable bags of gr. 250 or of 1 kg, to be connected directly to the pump body or to be used with the remote kit connection provided with the standard product.

MiniDUE 3/4 with the dosage of products based on polyphosphates, even at very low concentrations, will prevent the formation of limescale and corrosion in the hot water distribution lines.

For maintenance and sanitation interventions, please contact the industry professionals.



Version with bag attached to the pump body



Version with remote bag



Attention: entry only from the side of the 3 holes



Unscrew the screw, rotate and change the water inlet/outlet direction



Brass counter tangs and nuts supplied



First AcquaSIL 2/15® refill and remote kit supplied

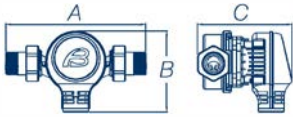
## WHAT WE SUPPLY

MiniDUE 3/4 is placed inside a smooth cardboard box.

The standard supply includes: MiniDUE 3/4 dosing pump, 250 g AcquaSIL 2/15® refill, remote installation kit, instructions manual.

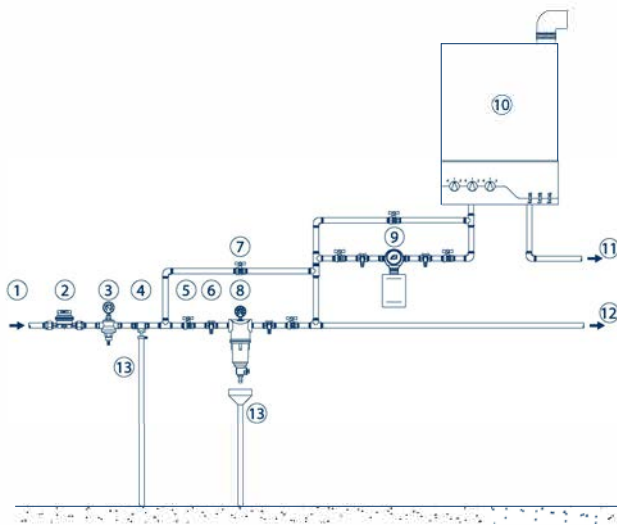
Code	Connections	Flow rate m <sup>3</sup> /h	Min/max pressure bar	Pieces per package	Kg. per package
PM011S	¾" M	1,8	1,5 - 10	24	26,4

## OVERALL DIMENSIONS EXPRESSED IN MM



Code	Weidth - A	Height - B	Depth - C
PM011S	164	94	111

## EXAMPLE OF INSTALLATION SCHEME



### Legend

1. Raw water inlet;
2. General counter;
3. Pressure reducer;
4. Disconnecter;
5. Shut-off valve;
6. Sampling tap;
7. By-pass valve;
8. Filter;
9. MiniDUE dosing pump;
10. Boiler;
11. Hot water outlet;
12. Cold water outlet;
13. Discharge.

## GUIDELINES FOR CORRECT MAINTENANCE

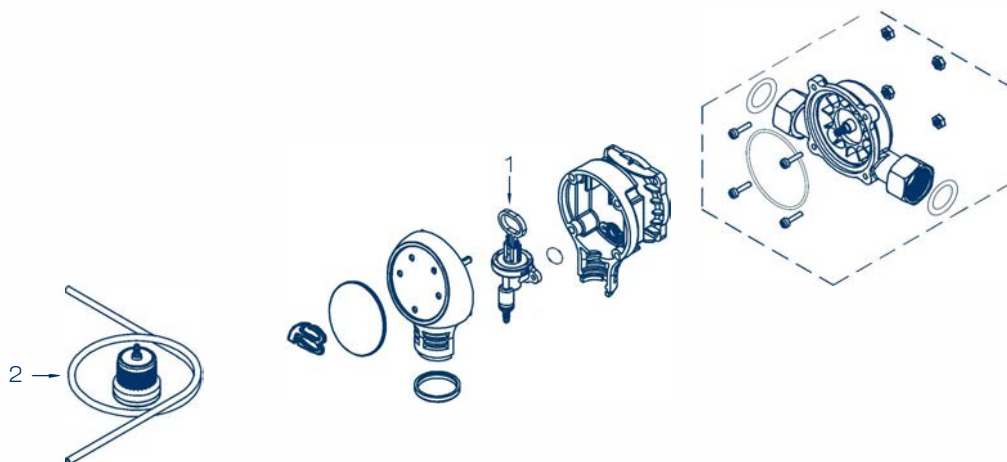


The correct operation and duration of the equipment over time depend on correct installation, proper use and methodical application of the maintenance instructions supplied.

First year	Second year	Third year	Fourth year	Fifth year
<b>CHAMBER ASSEMBLY</b> Clean or lubricate with food grade silicone	<b>CHAMBER ASSEMBLY</b> Clean or lubricate with food grade silicone	<b>CHAMBER ASSEMBLY</b> Replace	<b>CHAMBER ASSEMBLY</b> Clean or lubricate with food grade silicone	<b>CHAMBER ASSEMBLY</b> Clean or lubricate with food grade silicone
<b>SANITATION INTERVENTION</b> Annually or for periods of inactivity longer than 30 days	<b>SANITATION INTERVENTION</b> Annually or for periods of inactivity longer than 30 days	<b>SANITATION INTERVENTION</b> Annually or for periods of inactivity longer than 30 days	<b>SANITATION INTERVENTION</b> Annually or for periods of inactivity longer than 30 days	<b>SANITATION INTERVENTION</b> Annually or for periods of inactivity longer than 30 days

## RECOMMENDED SPARE PARTS

Pos.	Code	Description	Q.ty
1	<b>99006028</b>	Dosing chamber assembly 3/4"	1
2	<b>99006020</b>	Remote kit assembly	1



## CONSUMABLES AND MAINTENANCE

Code	Description	Q.ty
<b>48170005</b>	KIT SANITY Sanitizing product for sanitation processes 1 Kg. can - 4 Kg. pack	1
<b>48105016</b>	PEROXIDE ANALYSIS KIT for KIT SANITY The kit allows you to check whether the sanitation was done correctly	1
<b>48500007</b>	Food grade silicone suitable for the lubrication of mechanical parts and o.rings	1
<b>PC100</b>	AcquaSIL 2/15® - anti-scale anti-corrosion product Box with n° 4 refill (250 gr. / each)	1
<b>PC104</b>	AcquaSIL 2/15® - anti-scale anti-corrosion product Box with n° 1 refill (1 Kg.)	1