

# BRAVOMAX-A

Automatic self cleaning filter  
with differential pressure switch  
and motorized solenoid  
discharge valve  
12 - 24 - 36 - 48 h wash



- ✓ automatic brushing and dirty discharge system pressure gauges
- ✓ high flow rates
- ✓ electronic management with timed program
- ✓ built-in pressure differential with washing intervention  $\Delta P$  1 bar

## CHARACTERISTICS

BravoMAX-A is an automatic self-cleaning filter with pressure differential and motorized drain solenoid valve; ideal for filtration of high-water flows, with cartridge brushing system and dirt discharge.

BravoMAX-A is made entirely of stainless steel. The cartridge is made of stainless steel welded to an expanded support mesh. The specific structure of the cartridge makes it resistant to pressure shocks, reducing the problem of deformation and crushing. The nylon brushes have a stainless-steel support.

It is provided with pressure gauges for detecting pressure, and available in the version with threaded or flanged connections. BravoMAX-A is managed by a time program and electro-hydraulic differential for cleaning the filter cartridge, with simultaneous brushing and dirty discharging; equipped with a motorized solenoid valve for opening and closing of the drain. The pressure differential continuously checks the degree of clogging of the filter element and activates the backwash when a pressure difference  $\Delta P = 0.8$  Bar occurs; this device therefore allows to avoid clogging of the filter. The washing operation activates the brushing and dirt discharge system creating a high-speed tangential flow that removes the impurities accumulated in the filter vessel.

BravoMAX-A filters the water from the inside to the outside of the filter cartridge.

For maintenance and sanitation interventions, it is possible to contact the industry professionals.



304 stainless steel filter element



Motorized valve for closing / opening filter discharge



Flanged connections

## WHAT WE SUPPLY

BravoMAX-A is packed in a wooden box.

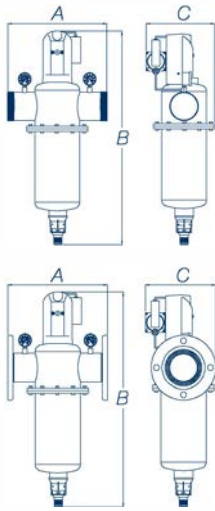
The standard supply includes: BravoMAX-A filter, power supply, 2# flanges (for flanged models), 2# glycerine pressure gauges, instructions for use and management, declaration of installation form (including warranty certificate).

Code	Connections	Flow rate ( $\Delta p = 0,5$ bar) m <sup>3</sup> /h	Filtration grade $\mu m$	Min/max pressure bar	Pieces per package	Kg. per package
<b>FT060E</b>	1" 1/2 M	30,0	150	2,0 - 10	1	7,2
<b>FT062E</b>	2" M	40,0	150	2,0 - 10	1	7,5
<b>FT064E</b>	2" 1/2 M	49,6	150	2,0 - 10	1	10,0
<b>FT066E</b>	3" M	54,0	150	2,0 - 10	1	13,0
<b>FT160E</b>	DN40	30,0	150	2,0 - 10	1	8,2
<b>FT162E</b>	DN50	40,0	150	2,0 - 10	1	8,5
<b>FT164E</b>	DN65	49,6	150	2,0 - 10	1	11,0
<b>FT166E</b>	DN80	54,0	150	2,0 - 10	1	14,0

**Notes:** 100 - 200-micron filtration degree on request

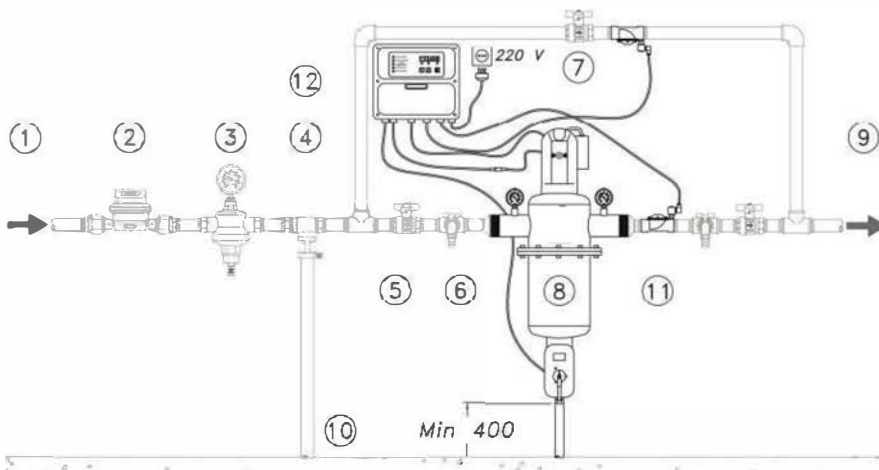
For orders, enter the degree of filtration after the code; Eg: FT044-200 - The price remains unchanged.

## OVERALL DIMENSIONS EXPRESSED IN MM



Code	Width - A	Height - B	Depth - C
FT060E - FT160E	310	640	220
FT062E - FT162E	310	640	220
FT064E - FT164E	310	700	220
FT066E - FT166E	310	700	220

## EXAMPLE OF INSTALLATION SCHEME



### Legend

1. Raw water inlet
2. Main water meter
3. Pressure reducer
4. Disconnecter
5. Shut-off valve
6. Sampling tap
7. By-pass valve
8. BravoMAX-A filter
9. Treated water outlet
10. Discharge
11. Solenoid valves
12. Control panel

## GUIDELINES FOR CORRECT MAINTENANCE

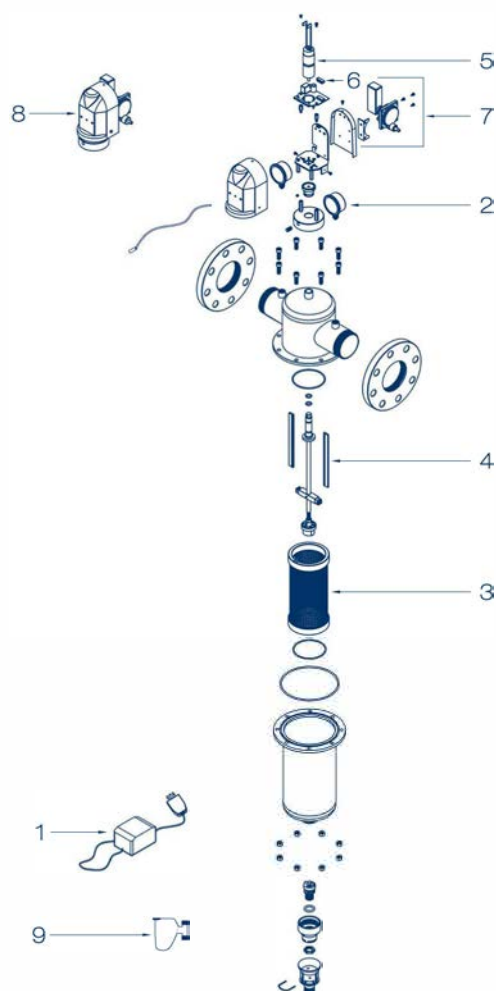


The correct operation and duration of the equipment over time depend on correct installation, proper use and methodical application of the maintenance instructions supplied.

First year	Second year	Third year	Fourth year	Fifth year
CARTRIDGE ASSEMBLY Cleaning	CARTRIDGE ASSEMBLY Cleaning	CARTRIDGE ASSEMBLY Cleaning	CARTRIDGE ASSEMBLY Cleaning	CARTRIDGE ASSEMBLY Change if necessary
SANITATION INTERVENTION Annually or for periods of inactivity exceeding 30 days	SANITATION INTERVENTION Annually or for periods of inactivity exceeding 30 days	SANITATION INTERVENTION Annually or for periods of inactivity exceeding 30 days	SANITATION INTERVENTION Annually or for periods of inactivity exceeding 30 days	SANITATION INTERVENTION When replacing the cartridge Annually or for periods of inactivity exceeding 30 days

## RECOMMENDED SPARE PARTS

Pos.	Code	Description	Q.ty
1	<b>23022006</b>	Power supply 230V	1
2	<b>99008025</b>	Pressure gauge assembly with connector	2
3	<b>11008042</b>	Cartridge assembly 150 µm - 1" ½ - 2" / DN40-50 (standard)	1
	<b>11008042-50</b>	Cartridge assembly 50 µm - 1" ½ - 2" / DN40-50	1
	<b>11008042-200</b>	Cartridge assembly 200 µm 1" ½ - 2" - DN40-50	1
	<b>11008042-100</b>	Cartridge assembly 100 µm -1" ½-2" / DN40-50	1
	<b>11008052</b>	Cartridge assembly 150 µm -2" ½-3" / DN65-80 (standard)	1
	<b>11008052-50</b>	Cartridge assembly 50 µm - 2" ½ - 3" / DN65-80	1
	<b>11008052-100</b>	Cartridge assembly 100 µm - 2" ½ - 3" / DN65-80	1
4	<b>11008052-200</b>	Cartridge assembly 200 µm - 2" ½ - 3" / DN65-80	1
	<b>24022005ARG</b>	Brush L.110 filter 1" ½ - 2"	2
	<b>24022006ARG</b>	Brush L.170 filter 2" ½ - 3"	2
5	<b>99020003</b>	Gearmotor assembly	1
6	<b>23022018</b>	Circuit microchip - program 10 cycles 12 hours	1
7	<b>99020005</b>	Pressure differential assembly	1
8	<b>99008024</b>	Electronic head assembly	1
9	<b>23022038</b>	Drain solenoid valve - 24V (supplied from 05/2018)	1



## CONSUMABLES AND MAINTENANCE

Code	Description	Q.ty
<b>48170005</b>	KIT SANITY Sanitizing product for sanitation processes 1 Kg. can - 4 Kg. pack	1
<b>48105016</b>	PEROXIDE ANALYSIS KIT for KIT SANITY The kit allows you to check whether the sanitation was done correctly	1
<b>48500007</b>	Food grade silicone suitable for the lubrication of mechanical parts and o.rings	1