

# BRAVOMATIC

Automatic self-cleaning filter



- ✓ automatic backwash with filtered water and brushing of the cartridge
- ✓ customized backwash programming; wash cycle with 3 rotation and internal lighting
- ✓ external cover of the equipment for UV protection of the filter cartridge
- ✓ date ring to indicate the sanitation cycle

## CHARACTERISTICS

BravoMATIC is an automatic self-cleaning filter with 360° adjustable connection plate and pressure reducer.

Cleaning of the stainless-steel cartridge occurs by means of a patented brushing system performed by using clean water, with simultaneous Backwash cleaning system and automatic discharging of the dirt.

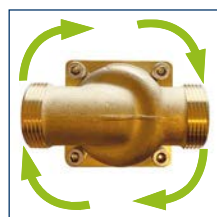
BravoMATIC is made with brass connection plate with threads according to EN 10226-1 and EN 228-1, Bowl in Grilamid® (high strength polyamide) and nylon cleaning brushes.

The cartridge is in stainless steel welded on an expanded support mesh. The specific structure of the filtering cartridge makes it resistant to pressure shock eliminating problems of deformation and crushing. All models are equipped with tangs and nuts.

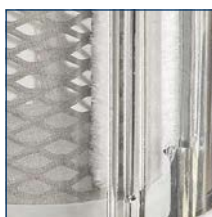
The BravoMATIC washing cycle involves brushing and backwashing the cartridge; the automatic opening of the drain valve (located on the bottom of the vessel) creates a high-speed tangential flow that removes the impurities accumulated in the filter vessel.

BravoMATIC is available in a single version with programmable operating cycles; a wash cycle performs 3 complete rotations. BravoMATIC filters the water from the outside to the inside of the filter cartridge.

For maintenance and sanitation interventions, it is possible to contact the industry professionals.



360° adjustable connection plate



Automatic cleaning of the filter element



Interior lighting

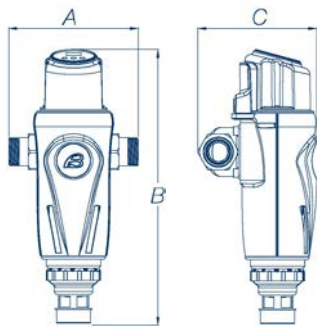
## WHAT WE SUPPLY

BravoMATIC is packed in a cardboard box; inlet and outlet connections on adjustable connection plate are supplied with sealing caps preventing any contamination; they need to be removed before installation.

Standard supply includes BravoMATIC filter, bag with brass connections kit, power supply, instructions for use - maintenance - assembly - installation (including declaration of conformity).

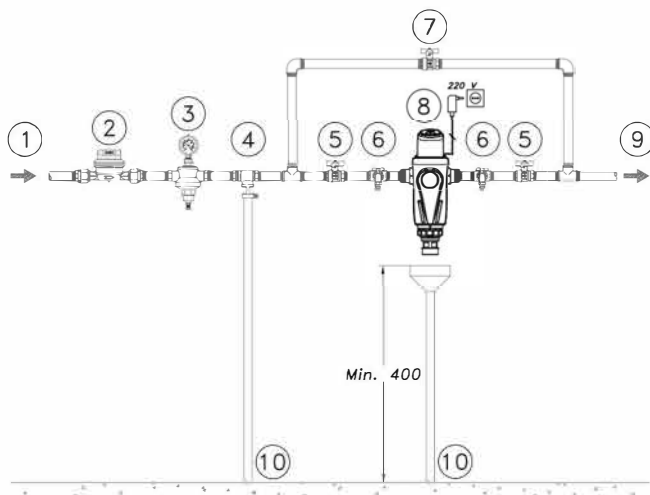
Code	Connections	Flow rate ( $\Delta p = 0,5 \text{ bar}$ ) $\text{m}^3/\text{h}$	Filtration grade $\mu\text{m}$	Min/max pressure bar	Pieces per package	Kg. per package
<b>FT030</b>	3/4" M	5,9	100	1,5 - 16	1	3
<b>FT032</b>	1" M	7,5	100	1,5 - 16	1	3
<b>FT034</b>	1 1/4" M	8,0	100	1,5 - 16	1	3,5

OVERALL DIMENSIONS EXPRESSED IN MM



Code	Width - A	Height - B	Depth - C
FT030	177	405	175
FT032	179	405	175
FT034	190	405	175

EXAMPLE OF INSTALLATION SCHEME



Legend

- 1. Raw water inlet
- 2. Main water meter
- 3. Pressure reducer (if any)
- 4. Disconnect (if any)
- 5. Shut-off valve
- 6. Sampling tap
- 7. By-pass valve
- 8. BravoMATIC filter
- 9. Treated water outlet
- 10. Discharge

GUIDELINES FOR CORRECT MAINTENANCE

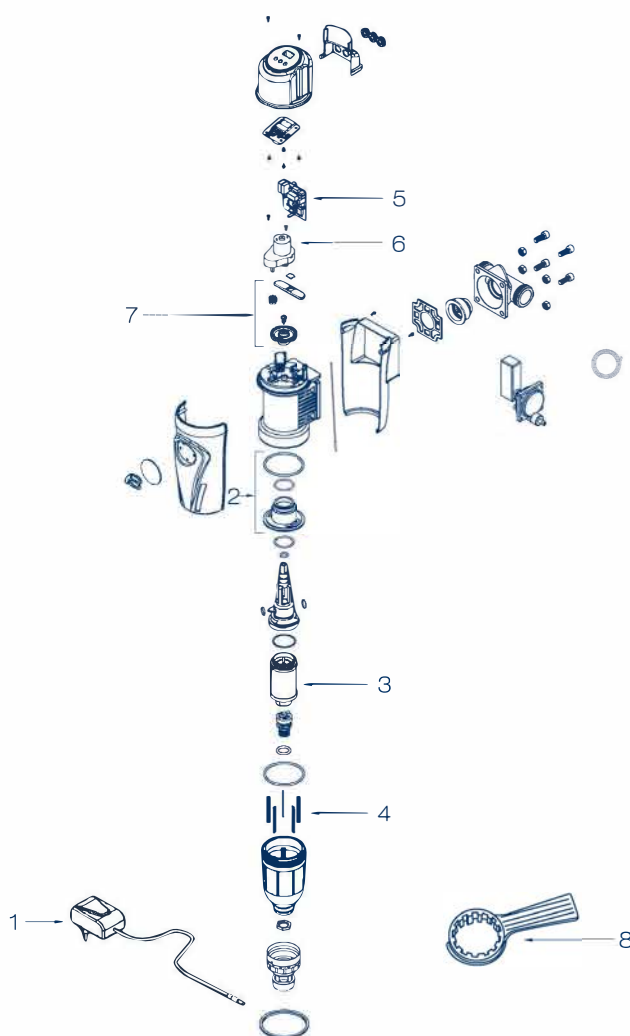


The correct operation and duration of the equipment over time depend on correct installation, proper use and methodical application of the maintenance instructions supplied.

First year	Second year	Third year	Fourth year	Fifth year
CARTRIDGE ASSEMBLY Cleaning	CARTRIDGE ASSEMBLY Cleaning	CARTRIDGE ASSEMBLY Cleaning	CARTRIDGE ASSEMBLY Cleaning	CARTRIDGE ASSEMBLY Change if necessary
SANITATION INTERVENTION Annually or for periods of inactivity exceeding 30 days	SANITATION INTERVENTION Annually or for periods of inactivity exceeding 30 days	SANITATION INTERVENTION Annually or for periods of inactivity exceeding 30 days	SANITATION INTERVENTION Annually or for periods of inactivity exceeding 30 days	SANITATION INTERVENTION When replacing the cartridge Annually or for periods of inactivity exceeding 30 days

## RECOMMENDED SPARE PARTS

Pos.	Code	Description	Q.ty
1	<b>99022030</b>	Power supply assembly 230V	1
	<b>23022043</b>	Universal power supply 100-240V (Cina - Australia)	1
2	<b>99007014</b>	Bushing assembly 100 µm cartridge with o. ring	1
3	<b>99022009</b>	Cartridge assembly 100 µm (standard)	1
	<b>99007008</b>	Cartridge assembly 30 µm - ¾" - 1" - 1" ¼	1
	<b>99007009</b>	Cartridge assembly 50 µm - ¾" - 1" - 1" ¼	1
	<b>99007012</b>	Cartridge assembly 150 µm - ¾" - 1" - 1" ¼	1
4	<b>99022005</b>	Brush L. 61 - ¾" - 1" - 1" ¼	5
	<b>24022002ARG</b>	Brush L. 61 with silverthread - ¾" - 1" - 1" ¼	5
5	<b>23022040</b>	Circuit	1
6	<b>99003025</b>	Gearmotor assembly	1
7	<b>99022024</b>	Movement gears assembly	1
8	<b>01022020</b>	Key for sump opening	1



## CONSUMABLES AND MAINTENANCE

Code	Description	Q.ty
<b>48170005</b>	KIT SANITY Sanitizing product for sanitation processes 1 Kg. can - 4 Kg. pack	1
<b>48105016</b>	PEROXIDE ANALYSIS KIT for KIT SANITY The kit allows you to check whether the sanitation was done correctly	1
<b>48500007</b>	Food grade silicone suitable for the lubrication of mechanical parts and o.rings	1