

# BRAVOFIL PLUS

Semi-automatic self cleaning filter with integrated pressure reducer



- ✓ brushing and washing system of the cartridge with filtered water
- ✓ 360° adjustable connection plate
- ✓ calendar date marker to indicate the sanitation cycle
- ✓ built-in pressure reducer

## CHARACTERISTICS

BravoFIL PLUS is a semi-automatic self-cleaning filter with 360° adjustable connection plate and pressure reducer. Offering a patented brushing system performed by using clean water, with simultaneous Backwash cleaning system of the cartridge and discharging of the dirt.

BravoFIL is made with brass connection plate with threads according to EN 10226-1 and EN 228-1, Bowl in Grilamid® (high strength polyamide) and nylon cleaning brushes.

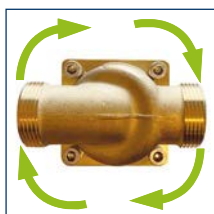
The cartridge is made in stainless steel. The specific structure of the filtering cartridge makes it resistant to pressure shock eliminating problems of deformation and crushing. All models are equipped with tangs and nuts.

The self-cleaning system starts the backwash with clean water and the cartridge brushing at the same time.

Built-in pressure reducer: regulation between 1,5 and 6 bas of outlet pressure. Default settings: 3 bar.

Raw water filtration occurs from OUT to IN of the stainless-steel cartridge.

For maintenance and sanitation interventions, it is possible to contact the industry professionals.



360° adjustable connection plate



Pressure reducer



The filter is equipped with 5 brushes for cleaning the filter cartridge; the brushes can be equipped with silver wire to prevent bacterial proliferation inside the filter

## WHAT WE SUPPLY

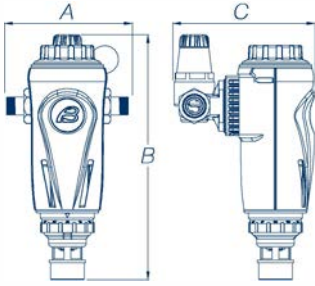
BravoFIL PLUS is packed in a cardboard box, the inlet and outlet of the filter attachment plate are equipped with sealing caps that avoid any external contamination, to be removed at the time of installation).

Code	Connections	Flow rate ( $\Delta p = 0,5$ bar) m <sup>3</sup> /h	Filtration grade $\mu m$	Min/max pressure bar	Pieces per package	Kg. per package
<b>FT120</b>	¾" M	2,3	89	1,5 - 16	6	12
<b>FT122</b>	1" M	3,6	89	1,5 - 16	6	12
<b>FT124</b>	1¼" M	5,8	89	1,5 - 16	6	12

**Remark:** upon request 30 – 50- and 150-micron filtration rating available

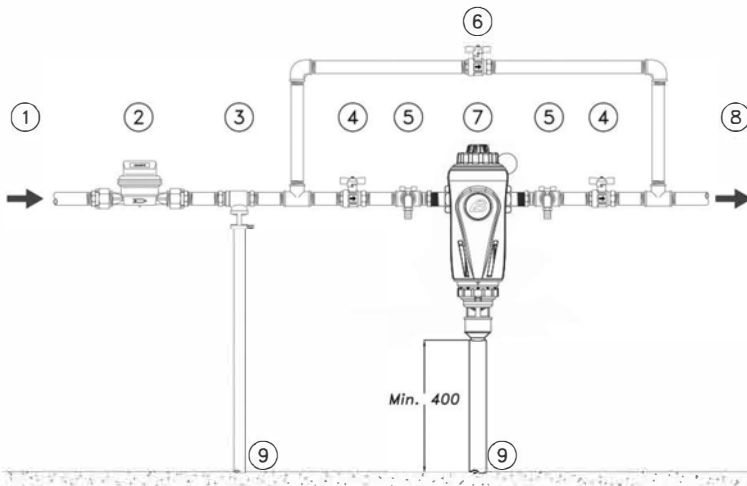
When placing orders, please specify the filtration required rating after the product nr. E. g. FT122-50. Price will not vary

## OVERALL DIMENSIONS EXPRESSED IN MM



Code	Width - A	Height - B	Depth - C
FT120	177	358	209
FT122	179	358	209
FT124	190	358	209

## EXAMPLE OF INSTALLATION SCHEME



### Legend

1. Raw water inlet
2. Main water meter
3. Disconnecter
4. Shut-off valve
5. Sampling tap
6. By-pass valve
7. BravoFIL PLUS filter
8. Treated water outlet
9. Discharge

## GUIDELINES FOR CORRECT MAINTENANCE

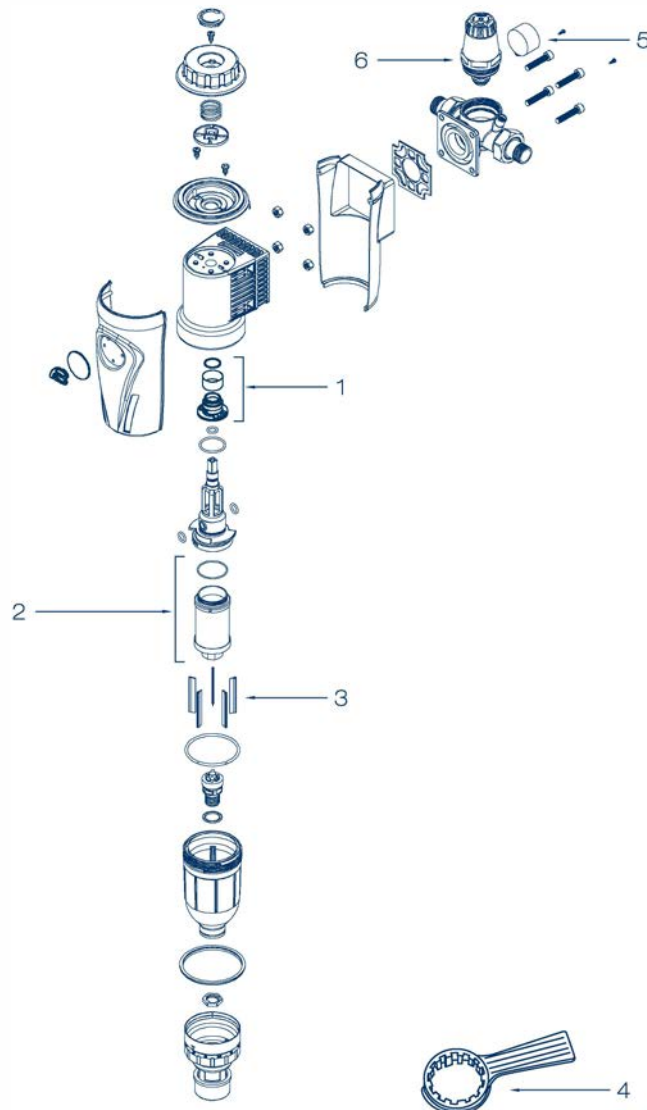


The correct operation and duration of the equipment over time depend on correct installation, proper use and methodical application of the maintenance instructions supplied.

First year	Second year	Third year	Fourth year	Fifth year
CARTRIDGE ASSEMBLY Cleaning	CARTRIDGE ASSEMBLY Cleaning	CARTRIDGE ASSEMBLY Cleaning	CARTRIDGE ASSEMBLY Cleaning	CARTRIDGE ASSEMBLY Change if necessary
SANITATION INTERVENTION Annually or for periods of inactivity exceeding 30 days	SANITATION INTERVENTION Annually or for periods of inactivity exceeding 30 days	SANITATION INTERVENTION Annually or for periods of inactivity exceeding 30 days	SANITATION INTERVENTION Annually or for periods of inactivity exceeding 30 days	SANITATION INTERVENTION When replacing the cartridge Annually or for periods of inactivity exceeding 30 days

## RECOMMENDED SPARE PARTS

Pos.	Code	Description	Q.ty
1	<b>99007027</b>	Bushing assembly cartridge 100 µm with o. ring	1
2	<b>99007007</b>	Cartridge assembly 100 µm - ¾" - 1" - 1" ¼ (standard)	1
	<b>99007008</b>	Cartridge assembly 30 µm - ¾" - 1" - 1" ¼	1
	<b>99007009</b>	Cartridge assembly 50 µm - ¾" - 1" - 1" ¼	1
	<b>99007012</b>	Cartridge assembly 150 µm - ¾" - 1" - 1" ¼	1
3	<b>24022002</b>	Brush L. 61	5
	<b>24022002ARG</b>	Brush L. 61 with silver thread - ¾" - 1" - 1" ¼	5
4	<b>01022020</b>	Sump opening key	1
5	<b>23022002</b>	Pressure gauge D. 40 - 0-12 bar	1
6	<b>23022029</b>	Complete pressure reducer assembly	1



## CONSUMABLES AND MAINTENANCE

Code	Description	Q.ty
48170005	KIT SANITY Sanitizing product for sanitation processes 1 Kg. can - 4 Kg. pack	1
48105016	PEROXIDE ANALYSIS KIT for KIT SANITY The kit allows you to check whether the sanitation was done correctly	1
48500007	Food grade silicone suitable for the lubrication of mechanical parts and o.rings	1