

BRAVOFIL

Semi-automatic self cleaning filter



- ✓ cartridge brushing and backwashing system with filtered water
- ✓ 360° rotatable connection plate with built-in non-return valve
- ✓ calendar date marker to indicate the sanitation cycle

CHARACTERISTICS

BravoFIL is a semi-automatic self-cleaning filter with 360° adjustable connection plate.

Offering a patented brushing system performed by using clean water, with simultaneous Backwash cleaning system of the cartridge and discharging of the dirt.

BravoFIL is made with brass connection plate with threads according to EN 10226-1 and EN 228-1, Bowl in Grilamid® (high strength polyamide) and nylon cleaning brushes.

The cartridge is made in stainless steel. The specific structure of the filtering cartridge makes it resistant to pressure shock eliminating problems of deformation and crushing. All models are equipped with tangs and nuts.

The self-cleaning system starts the backwash with clean water and the cartridge brushing at the same time.

Raw water filtration occurs from OUT to IN of the stainless-steel cartridge.

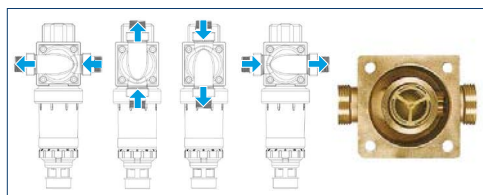
For maintenance and sanitation interventions, it is possible to contact the industry professionals.



Double cleaning internal turbojet cartridge + external brushing



The filter is equipped with 5 brushes for cleaning the filter cartridge; the brushes can be equipped with silver wire to prevent bacterial proliferation inside the filter



360° swiveling plate with built-in non-return valve

WHAT WE SUPPLY

BravoFIL is packed in a cardboard box; inlet and outlet connections on adjustable connection plate are supplied with sealing caps preventing any contamination; they need to be removed before installation.

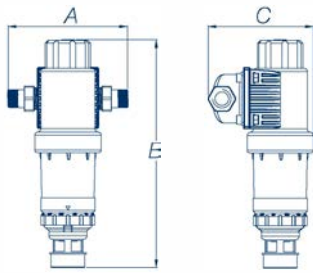
Standard supply includes: BravoFIL S filter, bag with brass connections kit, instructions for use - maintenance - assembly - installation (including declaration of conformity).

Code	Connections	Flow rate ($\Delta p = 0,5$ bar) m ³ /h	Filtration grade μm	Min/max pressure bar	Pieces per package	Kg. per package
FT020	3/4" M	3,2	100	1,5 - 10	8	10
FT022	1" M	4,5	100	1,5 - 10	8	10
FT024	1 1/4" M	5,0	100	1,5 - 10	8	11

Remark: upon request 30 – 50- and 150-micron filtration rating available

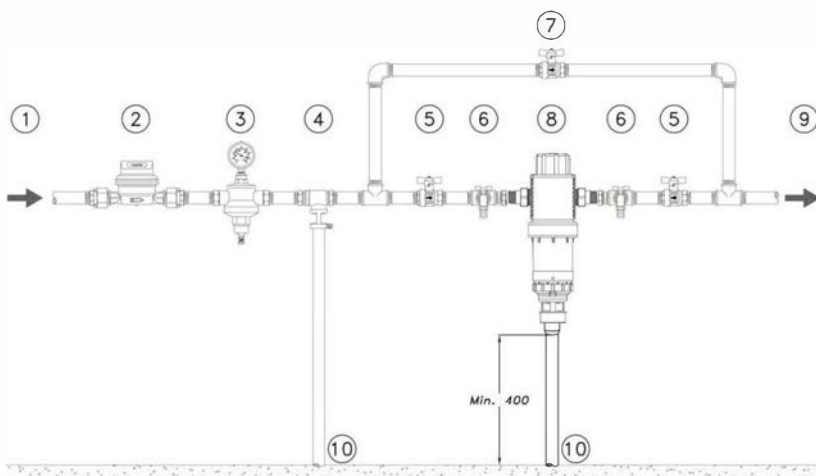
When placing orders, please specify the filtration required rating after the product nr. E. g. FT022-50. Price will not vary

OVERALL DIMENSIONS EXPRESSED IN MM



Code	Width - A	Height - B	Depth - C
FT020	177	350	136
FT022	179	350	136
FT024	190	350	136

EXAMPLE OF INSTALLATION SCHEME



Legend

1. Raw water inlet
2. Main water meter
3. Pressure reducer (if any)
4. Disconnecter (if any)
5. Shut-off valve
6. Samplingtap
7. By-pass valve
8. BravoFIL filter
9. Treated water outlet
10. Discharge

GUIDELINES FOR CORRECT MAINTENANCE

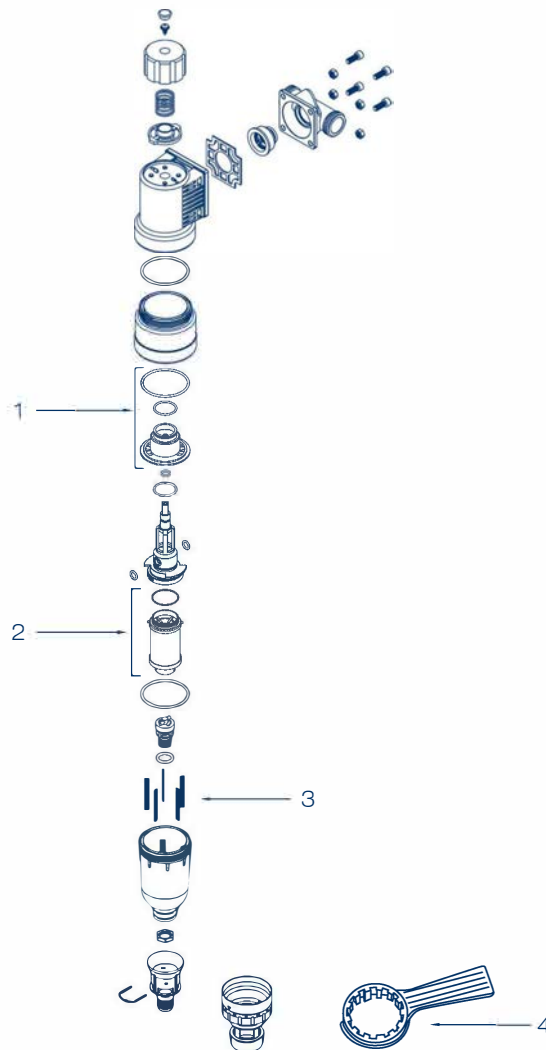


The correct operation and duration of the equipment over time depend on correct installation, proper use and methodical application of the maintenance instructions supplied.

First year	Second year	Third year	Fourth year	Fifth year
CARTRIDGE ASSEMBLY Cleaning	CARTRIDGE ASSEMBLY Cleaning	CARTRIDGE ASSEMBLY Cleaning	CARTRIDGE ASSEMBLY Cleaning	CARTRIDGE ASSEMBLY Change if necessary
SANITATION INTERVENTION Annually or for periods of inactivity exceeding 30 days	SANITATION INTERVENTION Annually or for periods of inactivity exceeding 30 days	SANITATION INTERVENTION Annually or for periods of inactivity exceeding 30 days	SANITATION INTERVENTION Annually or for periods of inactivity exceeding 30 days	SANITATION INTERVENTION When replacing the cartridge Annually or for periods of inactivity exceeding 30 days

RECOMMENDED SPARE PARTS

Pos.	Code	Description	Q.ty
1	99007014	Bushing assembly with cartridge 100 µ with o. ring	1
2	99007007	Cartridge assembly 100 µm - ¾" - 1" - 1" ¼ (standard)	1
	99007008	Cartridge assembly 30 µm - ¾" - 1" - 1" ¼	1
	99007009	Cartridge assembly 50 µm - ¾" - 1" - 1" ¼	1
	99007012	Cartridge assembly 150 µm - ¾" - 1" - 1" ¼	1
	24022002	Brush L. 61 - ¾" - 1" - 1" ¼ (standard)	5
3	24022002ARG	Brush L. 61 with silver thread - ¾" - 1" - 1" ¼	5
4	01022020	Key for sump opening	1



CONSUMABLES AND MAINTENANCE

Code	Description	Q.ty
48170005	KIT SANITY Sanitizing product for sanitation processes 1 Kg. can - 4 Kg. pack	1
48105016	PEROXIDE ANALYSIS KIT for KIT SANITY The kit allows you to check whether the sanitation was done correctly	1
48500007	Food grade silicone suitable for the lubrication of mechanical parts and o.rings	1