

CATALOGUE



CERTIFICATIONS

Acqua Brevetti ISO 9001:2015 certified company. All moulding, machining, assembly and testing processes are placed under strict controls established by the quality management system.



Azienda certificata
ISO 9001:2015

Acqua Brevetti has started on a certification path for the schemes ISO 14001:2015 and ISO 45001:2018, demonstrating the Company's attention to the environment and good environmental practices (14001) and respect for health and safety of workers (45001).



Acqua Brevetti has adopted a Social Responsibility Management System according to the SA 8000:2014 certification, because it's important to adopt ETHICALLY correct behaviour towards all employees, demonstrating commitment to best working conditions.



Acqua Brevetti certifies hygienic safety for its products, paying the utmost attention to the entire production chain in accordance with- the Italian D.M. 174/04 and D.M. 25/12.



Based on thirty-years international production experience, which has led the company to develop products that meet the most demanding national regulations in force – worldwide - Acqua Brevetti has decided to apply a strong and simplified approach to the compliance of its products to regulations in force at international level, developing its products in order to always comply with the most demanding regulations and technical standards in the economic macro-areas that the company is approaching. For the European area, for example, any new product is developed to comply with DVGW technical standards and with KTW standard for materials features and performance in contact with water. Close collaboration with high-quality raw material suppliers and internationally renowned university departments of scientific faculties allow the company to offer products that are always at the top of quality and performance. E.g., in year 2018 Acqua Brevetti has undertaken the DVGW certification for cleaning and self-cleaning filters. This certification ensures that the filters have a very high level of structural performance according to the standards required by the main German certification body.



To get PN10 certification (maximum pressure 10 bar), filters shall withstand 30 bar constant pressure and dynamic pressure with 200.000 cycles from 1.5 bar to 13 bar, for a period of 4 seconds. To get PN16 certification (maximum pressure 16 bar), filters shall withstand 48 bar constant pressure and dynamic pressure with 200.000 cycles from 1.5 bar to 20,8 bar, for a period of 4 seconds. Again, as example, Acqua Brevetti has obtained, for the category "anti-scale systems" of the Minidue Range (cod. PM004 - PM005 and PM011S), the WRAS certification. This certification complies with the requirements in force in the United Kingdom for use with water intended for human consumption.



Acqua Brevetti is associated with Confindustria and AQUA ITALIA, as an Italian company manufacturer of water treatment equipment.



PRODUCT SERIAL NUMBER

Each product is equipped with a Serial Number that serves to activate the warranty, is inserted directly through printing laser in the body of the equipment or printed on the label technical data.

Below you can see Serial Number's details:

Ex. 1111 222 06/17

↓ ↓ ↓

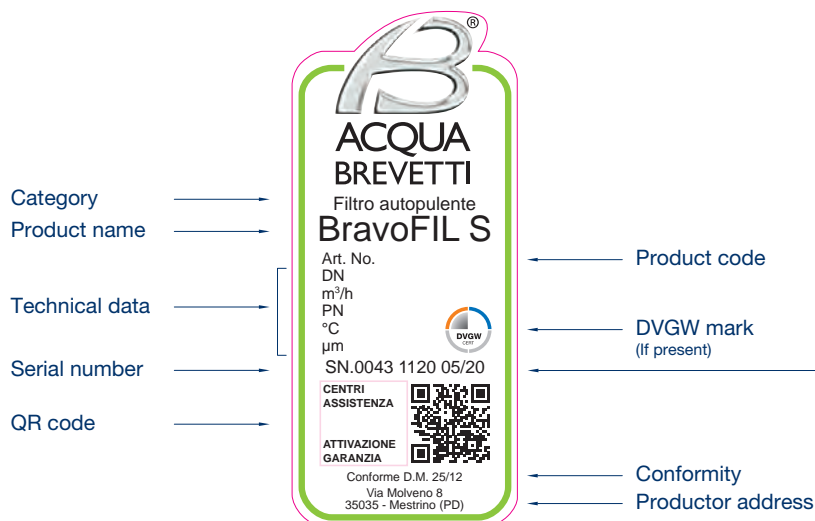
Last 4 Bar-Code numbers Batch Month/Year

SERVICE CENTER (ITALY ONLY) AND WARRANTY ACTIVATION

Each product is equipped with a QR code sticker that simplifies user access to view:

- OFFICIAL SERVICE CENTERS (ITALY ONLY)
- WARRANTY ACTIVATION

Below an example of the label:



There are two ways to activate the Acqua Brevetti guarantee:

1. Use the smartphone to frame the QR Code shown on the product label.
2. Connect to www.acquabrevetti.it and select the item "Attivazione Garanzia" in the menu and then "Registrazione Garanzia".

In both modes, a page will open where you can enter your personal data and the SN (serial number) of the purchased product. Finally click on "INVIA" and wait the confirmation message. If you don't receive any message, please contact Acqua Brevetti at servizi@acquabrevetti.it

MEANING OF THE ICONS



These symbols can be found in the TABLES of products that reach a **nominal pressure** of PN 10 or PN 16



This symbol is found in the TABLES of dedicated products for **hot water** that exceeds 30 °C



This symbol is found in the TABLES of the products that contribute to the **protection of the environment** in terms of less waste and reduced consumption



This symbol is found in the "PRATICO" TABLES to help you choose products or sizing equipment in general



This symbol is found in the "OUR BUNDLE PROPOSAL" TABLES to indicate **optimal solutions** for **purchasing products at a more convenient price**



This symbol is found in the TABLES "GUIDELINES FOR CORRECT MAINTENANCE"

PROTECTION FILTRATION

Domestic water often contains harmful foreign bodies such as sand, flakes of oxides and coarse material which, if not removed, may cause serious damages to the system elements and to the whole system.

Such impurities can be eliminated by installing filters in compliance with current regulations. These filters must be installed upstream of the plant to protect whole water system of the house.

The current Technical Standards and Directives (European Directive 2020/2184, UNI EN 806-2 , UNI 9182 and UNI 8065:2019) require the installation of a mechanical filter. Acqua Brevetti' s cleaning and self-cleaning filters are far advanced versions developed with edge technologies (in comparison with cartridge filters). The filters are designed specifically for protection of the water system, eliminating coarse bodies such as small quantity of sand, flakes of rust and incrustations, scrap and pebbles. All our filters are equipped with semi-automatic or automatic cleaning systems able to guarantee a quick and effective cleaning both filter cartridge and the vessel. Thanks to the stainless-steel cartridge, filters can regularly undergo washing and sanitization procedures.

The standard filtration grades of the filter cartridges used are 89 or 100 microns depending on product model.

Our filters can be used to protect:

- supply and distribution systems for hot and cold domestic water
- heating and cooling installations
- distribution networks
- steam generators

Warning!

Protective filters are not suitable for filtration of water with high content of sand, silt, and suspended materials. In such cases, other filtration systems are more suitable (cyclones, multilayer filters, etc.).





- **MANUAL CLEANING, SELF CLEANING,
SEMI-AUTOMATIC AND AUTOMATIC FILTERS**
MECHANICAL FILTRATION

BRAVO

Manual cleaning filter



- ✓ compact
- ✓ small size
- ✓ dirty drain valve

CHARACTERISTICS

Bravo is a small size manual cleaning filter with dirt drain valve.

Bravo is made with brass head with threads according to EN 10226-1 and EN 228-1, bowl in Grilamid® (high strength polyamide) and built-in drain tap. The cartridge is made in stainless-steel, and it is clamped on a plastic bushing with o-ring sealing. The specific structure of the filtering cartridge makes it resistant to pressure shock eliminating problems of deformation and crushing.

Bravo is available in two models: with or without pressure gauge (measure range 0-12 bar).

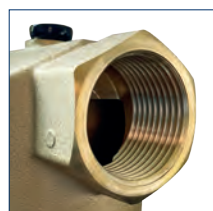
Raw water filtration occurs from IN to OUT of the stainless-steel cartridge.

Bravo is supplied with a plastic key to open the bowl and a hand brush to facilitate cleanings.

For maintenance and sanitation interventions, it is possible to contact the industry professionals.



AISI 304 stainless steel filter cartridge with o-ring seal on pinched bushing.



Thread according to EN 10226-1 and EN 228-1 Standards



Bravo filters are supplied with an opening key and a practical brush for cleaning the cartridge.

WHAT WE SUPPLY

Bravo is packed in a cardboard box; inlet and outlet connections on filter head are supplied with sealing caps preventing any contamination; they need to be removed before installation.

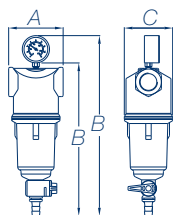
Standard supply includes Bravo filter, sump opening key, brush for cartridge cleaning, instructions for use - maintenance - assembly - installation (including declaration of conformity).

| Code | Connections | Flow rate ($\Delta p = 0,5$ bar) m ³ /h | Filtration grade μm | Min/max pressure bar | Pieces per package | Kg. per package |
|--------------|-------------|---|-----------------------------|-------------------------|--------------------|-----------------|
| FT310 | 1/2" F | 4,2 | 89 | 1,5 - 12 | 12 | 15,6 |
| FT312 | 3/4" F | 6,6 | 89 | 1,5 - 12 | 12 | 15,6 |
| FT314 | 1" F | 8,7 | 89 | 1,5 - 12 | 12 | 15,6 |

Notes: 50 micron filtration degree on request

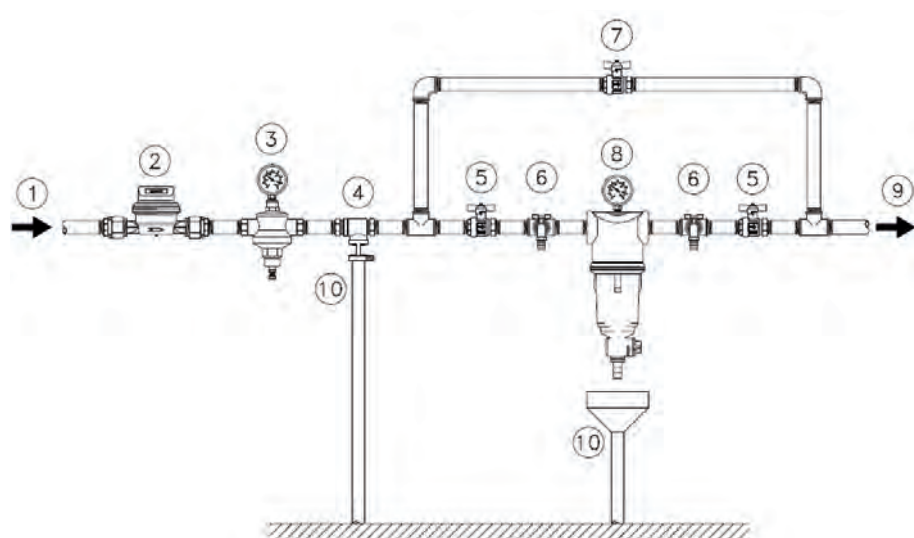
For orders, enter the degree of filtration after the code; Eg: FT312-50 - The price remains unchanged.

OVERALL DIMENSIONS EXPRESSED IN MM



| Code | Width - A | Height - B | Depth - C |
|-------|-----------|------------|-----------|
| FT310 | 87 | 270 | 71 |
| FT312 | 90 | 270 | 71 |
| FT314 | 95 | 270 | 71 |

EXAMPLE OF INSTALLATION SCHEME



Legend

1. Raw water inlet
2. Main water meter
3. Pressure reducer (if any)
4. Disconnect (if any)
5. Shut-off valve
6. Samplingtap
7. By-pass valve
8. Bravo filter
9. Treated water outlet
10. Discharge

GUIDELINES FOR CORRECT MAINTENANCE

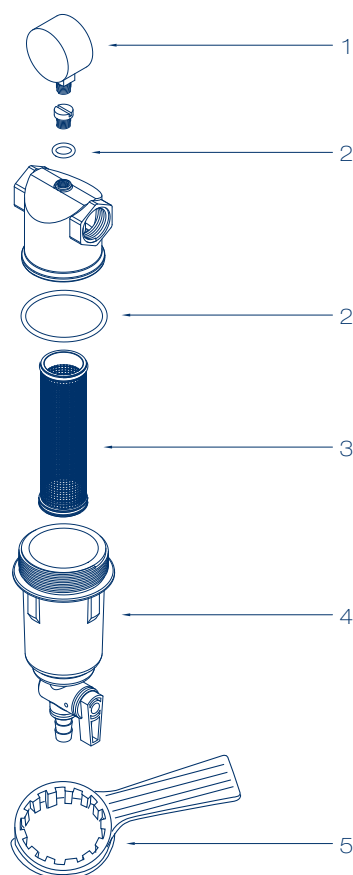


The correct operation and duration of the equipment over time depend on correct installation, proper use and methodical application of the maintenance instructions supplied.

| First year | Second year | Third year | Fourth year | Fifth year |
|---|---|---|---|--|
| CARTRIDGE ASSEMBLY Cleaning | CARTRIDGE ASSEMBLY Cleaning | CARTRIDGE ASSEMBLY Cleaning | CARTRIDGE ASSEMBLY Cleaning | CARTRIDGE ASSEMBLY Change if necessary |
| SANITATION INTERVENTION Annually or for periods of inactivity exceeding 30 days | SANITATION INTERVENTION Annually or for periods of inactivity exceeding 30 days | SANITATION INTERVENTION Annually or for periods of inactivity exceeding 30 days | SANITATION INTERVENTION Annually or for periods of inactivity exceeding 30 days | SANITATION INTERVENTION When replacing the cartridge Annually or for periods of inactivity exceeding 30 days |

RECOMMENDED SPARE PARTS

| Pos. | Code | Description | Q.ty |
|------|-----------------|--|------|
| 1 | 23022002 | Pressure gauge D. 40 / 0-12 bar | 1 |
| 2 | 99004007 | O. ring kit Bravo filter (n° 2 pieces) | 1 |
| 3 | 99009001 | Cartridge assembly 89 µm with o. ring (standard) | 1 |
| | 99009003 | Cartridge assembly 50 µm with o. ring | 1 |
| 4 | 99004003 | Sump assembly with o. ring and drain faucet | 1 |
| 5 | 01022018 | Key for sump opening | 1 |



CONSUMABLES AND MAINTENANCE

| Code | Description | Q.ty |
|-----------------|--|------|
| 48170005 | KIT SANITY Sanitizing product for sanitation processes 1 Kg. can - 4 Kg. pack | 1 |
| 48105016 | PEROXIDE ANALYSIS KIT for KIT SANITY The kit allows you to check whether the sanitation was done correctly | 1 |
| 48500007 | Food grade silicone suitable for the lubrication of mechanical parts and o.rings | 1 |

PULIFIL

Semi-automatic self cleaning filter



- ✓ robust and compact
- ✓ cartridge brushing system and dirty discharge in a single operation
- ✓ excellent courses
- ✓ calendar date marker to indicate the sanitation cycle

CHARACTERISTICS

PuliFIL is a semi-automatic self-cleaning filter with high flow rate, With a patented brushing system, cleaning of the filter and a discharge of the dirt at the same time.

PuliFIL is made with brass head with threads according to EN 10226-1 and EN 228-1. The bowl is made of Grilamid® (high strength polyamide) and nylon cleaning brushes.

The cartridge is made of stainless-steel. The specific structure of the filtering cartridge makes it resistant to pressure shock eliminating problems of deformation and crushing.

1" 1/2 and 2" models are equipped with 2 pressure gauges, tangs and nuts.

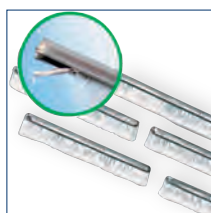
The cleaning of the PuliFIL is easy and immediate: it is enough to rotate clockwise the upper knob.

Raw water filtration occurs from OUT to IN of the stainless-steel cartridge.

For maintenance and sanitation interventions, it is possible to contact the industry professionals.



Cleaning of filtering cartridge



The filter is equipped with 5 brushes for cleaning the filter cartridge; the brushes can be equipped with silver wire to prevent bacterial proliferation inside the filter



Calendar date marker

WHAT WE SUPPLY

PuliFIL is packed in a cardboard box; inlet and outlet connections on filter head are supplied with sealing caps preventing any contamination; they need to be removed before installation.

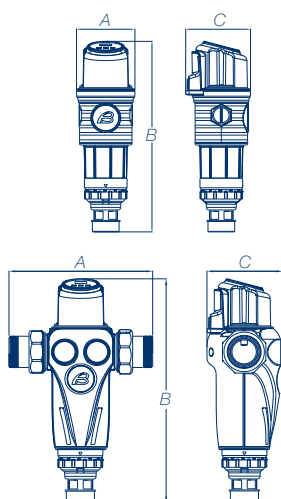
Standard supply includes PuliFIL filter, bag with brass connections kit (only for units with 1 1/2" – 2" connection), instructions for use - maintenance - assembly - installation (including declaration of conformity).

| Code | Connections | Flow rate ($\Delta p = 0,5 \text{ bar}$) m^3/h | Filtration grade μm | Min/max pressure bar | Pieces per package | Kg. per package |
|--------------|-------------|--|--------------------------------------|----------------------------|-----------------------|--------------------|
| FT010 | 3/4" F | 6,4 | 89 | 1,5 - 16 | 8 | 11 |
| FT012 | 1" F | 9,6 | 89 | 1,5 - 16 | 8 | 11 |
| FT014 | 1"1/4 F | 10,6 | 89 | 1,5 - 16 | 8 | 14 |
| FT016 | 1"1/2 M | 22,0 | 89 | 1,5 - 16 | 4 | 20 |
| FT018 | 2" M | 22,6 | 89 | 1,5 - 16 | 4 | 20 |

Remark: upon request 30 – 50- and 150-micron filtration rating available

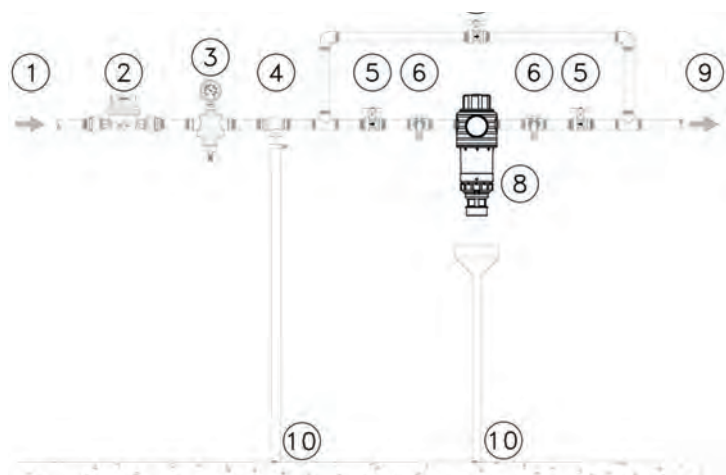
When placing orders, please specify the filtration required rating after the product nr. E. g. FT012-50. Price will not vary

OVERALL DIMENSIONS EXPRESSED IN MM



| Code | Width - A | Height - B | Depth - C |
|-------|-----------|------------|-----------|
| FT360 | 110 | 366 | 122 |
| FT362 | 110 | 366 | 122 |
| FT364 | 110 | 366 | 122 |
| FT366 | 265 | 416 | 140 |
| FT368 | 265 | 416 | 140 |

EXAMPLE OF INSTALLATION SCHEME



Legend

1. Raw water inlet
2. Main water meter
3. Pressure reducer (if any)
4. Disconnecter (if any)
5. Shut-off valve
6. Samplingtap
7. By-pass valve
8. PuliFIL filter
9. Treated water outlet
10. Discharge

GUIDELINES FOR CORRECT MAINTENANCE

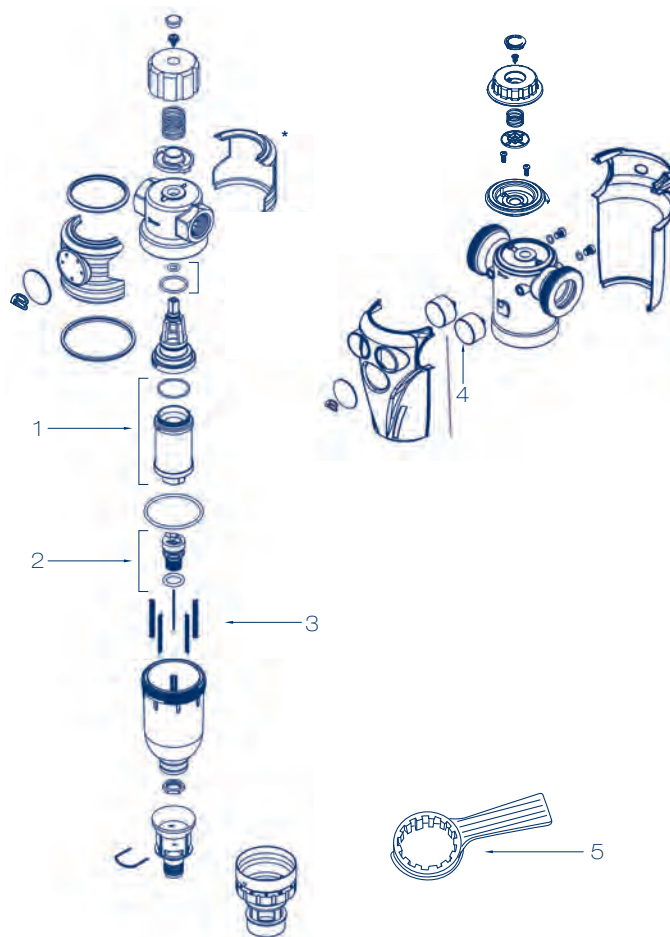


The correct operation and duration of the equipment over time depend on correct installation, proper use and methodical application of the maintenance instructions supplied.

| First year | Second year | Third year | Fourth year | Fifth year |
|--|--|--|--|--|
| CARTRIDGE ASSEMBLY Cleaning | CARTRIDGE ASSEMBLY Cleaning | CARTRIDGE ASSEMBLY Cleaning | CARTRIDGE ASSEMBLY Cleaning | CARTRIDGE ASSEMBLY Change if necessary |
| SANITATION INTERVENTION Annually or for periods of inactivity exceeding 30 days | SANITATION INTERVENTION Annually or for periods of inactivity exceeding 30 days | SANITATION INTERVENTION Annually or for periods of inactivity exceeding 30 days | SANITATION INTERVENTION Annually or for periods of inactivity exceeding 30 days | SANITATION INTERVENTION When replacing the cartridge Annually or for periods of inactivity exceeding 30 days |

RECOMMENDED SPARE PARTS

| Pos. | Code | Description | Q.ty |
|------|--------------------|---|------|
| 1 | 99022009 | Cartridge assembly 100 µm - ¾" - 1" - 1" ¼ (standard) | 1 |
| | 99003002 | Cartridge assembly 30 µm - ¾" - 1" - 1" ¼ | 1 |
| | 99003003 | Cartridge assembly 50 µm - ¾" - 1" - 1" ¼ | 1 |
| | 99003010 | Cartridge assembly 150 µm - ¾" - 1" - 1" ¼ | 1 |
| | 99003005 | Cartridge assembly 100 µm - 1" ½ - 2" (standard) | 1 |
| | 99003006 | Cartridge assembly 30 µm - 1" ½ - 2" | 1 |
| | 99003009 | Cartridge assembly 50 µm - 1" ½ - 2" | 1 |
| | 99003011 | Cartridge assembly 150 µm - 1" ½ - 2" | 1 |
| 2 | 99022001 | Drain assembly with o. ring | 1 |
| 3 | 24022002 | Brush L.61 - ¾" - 1" - 1" ¼ | 5 |
| | 99022005 | Brush L.61 - ¾" - 1" - 1" ¼ (DVGW version) | 5 |
| | 24022003 | Brush L.123 - 1" ½ - 2" | 5 |
| | 24022002ARG | Brush L.61 with silver threads - ¾" - 1" - 1" ¼ | 5 |
| | 24022003ARG | Brush L.123 with silver threads - 1" ½ - 2" | 5 |
| 4 | 23022032 | Front pressure gauge Ø 40 | 2 |
| 5 | 01022020 | Key for sump opening | 1 |



CONSUMABLES AND MAINTENANCE

| Code | Description | Q.ty |
|-----------------|--|------|
| 48170005 | KIT SANITY Sanitizing product for sanitation processes 1 Kg. can - 4 Kg. pack | 1 |
| 48105016 | PEROXIDE ANALYSIS KIT for KIT SANITY The kit allows you to check whether the sanitation was done correctly | 1 |
| 48500007 | Food grade silicone suitable for the lubrication of mechanical parts and o.rings | 1 |

PULIMATIC

Automatic self cleaning filter



- ✓ automatic washing and brushing of the cartridge
- ✓ customized backwash programming, wash cycle with 3 rotations
- ✓ high flow rates
- ✓ calendar date marker to indicate the sanitation cycle

CHARACTERISTICS

PuliMATIC is an automatic self-cleaning filter with high flow rate, with a patented brushing system, cleaning of the filter and dirt discharging occurring at the same time and by means of electronic control system.

PuliMATIC is made with brass head with threads according to EN 10226-1 and EN 228-1, Bowl in Grilamid® (high strength polyamide) and nylon cleaning brushes.

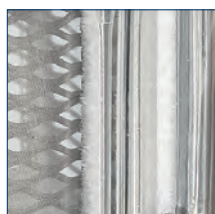
The cartridge is made in stainless steel. The specific structure of the filtering cartridge makes it resistant to pressure shock eliminating problems of deformation and crushing. 1" ½ and 2" models are equipped with 2 pressure gauges, tangs, and nuts.

The cleaning of PuliMATIC is completely automatic: cartridge brushing and dirt discharge at the same time due to electronic control. Default settings: cleaning every 4 days with 3 rotations of the brushing system. Customizable washing time and manual cleaning activation possibility. 89-micron filtration rating.

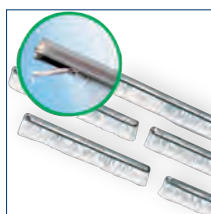
Cleaning time: 19 seconds. Water consumption per cleaning: 14 lt. (with a 6 Bar inlet pressure). No anti-flooding system.

Raw water filtration occurs from OUT to IN of the stainless-steel cartridge.

For maintenance and sanitation interventions, it is possible to contact the industry professionals.



Cleaning of the filtering cartridge



The filter is equipped with 5 brushes for cleaning the filter cartridge; the brushes can be equipped with silver wire to prevent bacterial proliferation inside the filter



Calendar date marker

WHAT WE SUPPLY

PuliMATIC is packed in a cardboard box; inlet and outlet connections on filter head are supplied with sealing caps preventing any contamination; they need to be removed before installation.

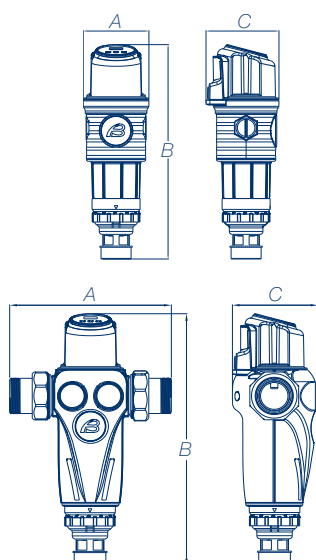
Standard supply includes PuliMATIC filter, bag with brass connections kit (only for units with 1 ½" – 2" connection), power supply, instructions for use - maintenance - assembly - installation (including declaration of conformity).

| Code | Connections | Flow rate ($\Delta p = 0,5$ bar) m^3/h | Filtration grade μm | Min/max pressure bar | Pieces per package | Kg. per package |
|--------------|-------------|---|--------------------------------|----------------------------|-----------------------|--------------------|
| FT360 | ¾" F | 6,4 | 89 | 1,5 - 16 | 1 | 1,5 |
| FT362 | 1" F | 9,6 | 89 | 1,5 - 16 | 1 | 1,5 |
| FT364 | 1"¼ F | 10,6 | 89 | 1,5 - 16 | 1 | 2 |
| FT366 | 1"½ M | 22,0 | 89 | 1,5 - 16 | 1 | 5 |
| FT368 | 2" M | 22,6 | 89 | 1,5 - 16 | 1 | 5 |

Remark: upon request 30 – 50- and 150-micron filtration rating available

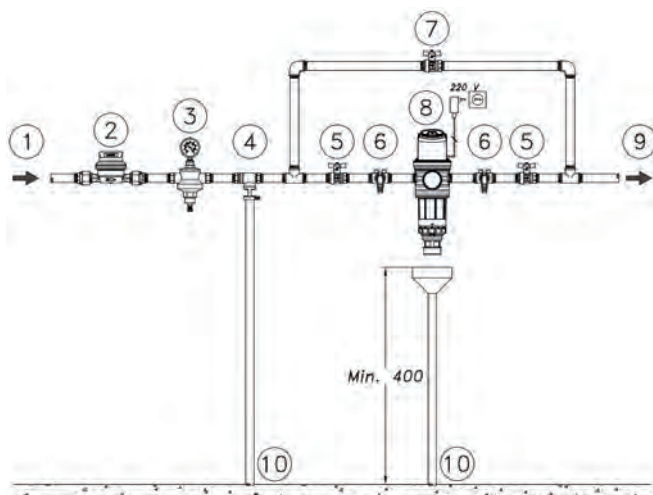
When placing orders, please specify the filtration required rating after the product nr. E. g. FT362-50. Price will not vary.

OVERALL DIMENSIONS EXPRESSED IN MM



| Code | Width - A | Height - B | Depth - C |
|-------|-----------|------------|-----------|
| FT360 | 110 | 366 | 122 |
| FT362 | 110 | 366 | 122 |
| FT364 | 110 | 366 | 122 |
| FT366 | 265 | 416 | 140 |
| FT368 | 265 | 416 | 140 |

EXAMPLE OF INSTALLATION SCHEME



Legend

1. Raw water inlet
2. Main water meter
3. Pressure reducer (if any)
4. Disconnecter (if any)
5. Shut-off valve
6. Sampling tap
7. By-pass valve
8. PuliMATIC filter
9. Treated water outlet
10. Discharge

GUIDELINES FOR CORRECT MAINTENANCE

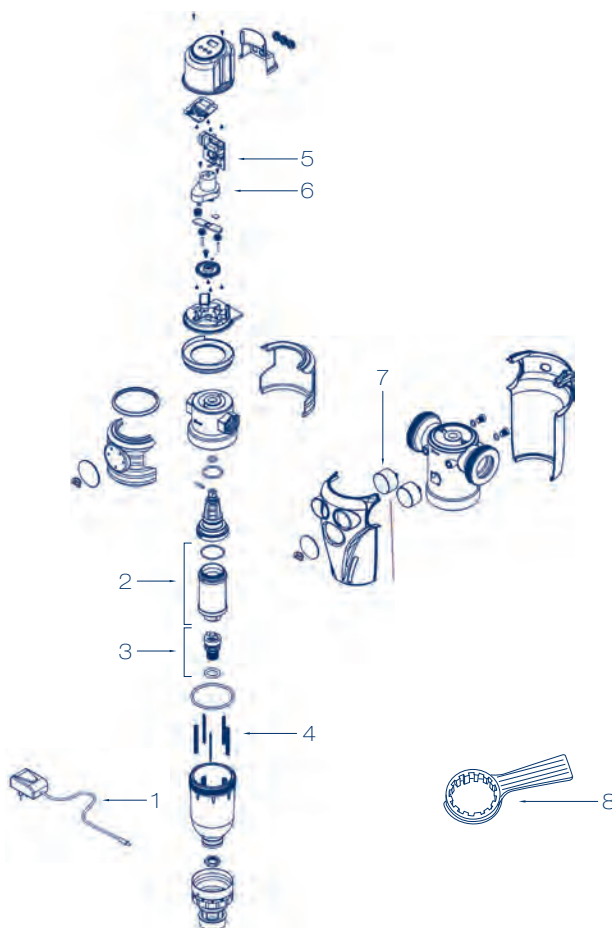


The correct operation and duration of the equipment over time depend on correct installation, proper use and methodical application of the maintenance instructions supplied.

| First year | Second year | Third year | Fourth year | Fifth year |
|--|--|--|--|--|
| CARTRIDGE ASSEMBLY Cleaning | CARTRIDGE ASSEMBLY Cleaning | CARTRIDGE ASSEMBLY Cleaning | CARTRIDGE ASSEMBLY Cleaning | CARTRIDGE ASSEMBLY Change if necessary |
| SANITATION INTERVENTION Annually or for periods of inactivity exceeding 30 days | SANITATION INTERVENTION Annually or for periods of inactivity exceeding 30 days | SANITATION INTERVENTION Annually or for periods of inactivity exceeding 30 days | SANITATION INTERVENTION Annually or for periods of inactivity exceeding 30 days | SANITATION INTERVENTION When replacing the cartridge Annually or for periods of inactivity exceeding 30 days |

RECOMMENDED SPARE PARTS

| Pos. | Code | Description | Q.ty |
|------|--------------------|---|------|
| 1 | 99022030 | 230V Power supply assembly (standard) | 1 |
| | 23022043 | Universal power supply 100-240V (Cina - Australia) | 1 |
| 2 | 99022009 | Cartridge assembly 100 µm - ¾" - 1" - 1" ¼ (standard) | 1 |
| | 99003002 | Cartridge assembly 30 µm - ¾" - 1" - 1" ¼ | 1 |
| | 99003003 | Cartridge assembly 50 µm - ¾" - 1" - 1" ¼ | 1 |
| | 99003010 | Cartridge assembly 150 µm - ¾" - 1" - 1" ¼ | 1 |
| | 99003005 | Cartridge assembly 100 µm - 1" ½ - 2" (standard) | 1 |
| | 99003006 | Cartridge assembly 30 µm - 1" ½ - 2" | 1 |
| | 99003009 | Cartridge assembly 50 µm - 1" ½ - 2" | 1 |
| | 99003011 | Cartridge assembly 150 µm - 1" ½ - 2" | 1 |
| 3 | 99022001 | Drain assembly with o. ring | 1 |
| 4 | 24022002 | Brush L.61 - ¾" - 1" - 1" ¼ | 5 |
| | 99022005 | Brush L.61 - ¾" - 1" - 1" ¼ (DVGW version) | 5 |
| | 24022003 | Brush L.123 - 1" ½ - 2" | 5 |
| | 24022002ARG | Brush L.61 with silver thread - ¾" - 1" - 1" ¼ | 5 |
| | 24022003ARG | Brush L.123 with silver thread - 1" ½ - 2" | 5 |
| 5 | 23022044 | Fixed connector circuit | 1 |
| 6 | 99003025 | Gearmotor assembly | 1 |
| 7 | 23022032 | Front pressure gauge Ø 40 | 2 |
| 8 | 01022020 | Key for sump opening | 1 |



CONSUMABLES AND MAINTENANCE

| Code | Description | Q.ty |
|-----------------|--|------|
| 48170005 | KIT SANITY Sanitizing product for sanitation processes 1 Kg. can - 4 Kg. pack | 1 |
| 48105016 | PEROXIDE ANALYSIS KIT for KIT SANITY The kit allows you to check whether the sanitation was done correctly | 1 |
| 48500007 | Food grade silicone suitable for the lubrication of mechanical parts and o.rings | 1 |

BRAVOFIL S

Semi-automatic self cleaning filter



- ✓ brushing and washing system of the cartridge with filtered water
- ✓ 360° adjustable connection plate
- ✓ calendar date marker to indicate the sanitation cycle

CHARACTERISTICS

BravoFIL S is a semi-automatic self-cleaning filter with 360° adjustable connection plate.

Offering a patented brushing system performed by using clean water, with simultaneous Backwash cleaning system of the cartridge and discharging of the dirt.

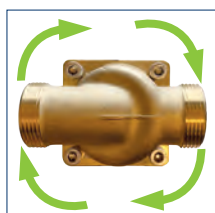
BravoFIL S is made with brass connection plate with threads according to EN 10226-1 and EN 228-1, Bowl in Grilamid® (high strength polyamide) and nylon cleaning brushes.

The cartridge is made in stainless steel. The specific structure of the filtering cartridge makes it resistant to pressure shock eliminating problems of deformation and crushing. All models are equipped with tangs and nuts.

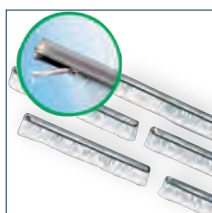
The self-cleaning system starts the backwash with clean water and the cartridge brushing at the same time.

Raw water filtration occurs from OUT to IN of the stainless-steel cartridge.

For maintenance and sanitation interventions, it is possible to contact the industry professionals.



360° adjustable connection plate



The filter is equipped with 5 brushes for cleaning the filter cartridge; the brushes can be equipped with silver wire to prevent bacterial proliferation inside the filter



Calendar date marker

WHAT WE SUPPLY

BravoFIL S is packed in a cardboard box; inlet and outlet connections on adjustable connection plate are supplied with sealing caps preventing any contamination; they need to be removed before installation.

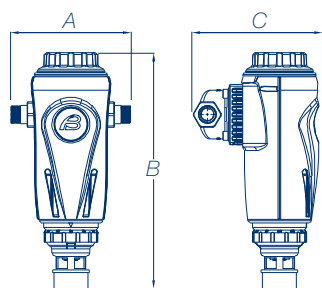
Standard supply includes: BravoFIL S filter, bag with brass connections kit, instructions for use - maintenance - assembly - installation (including declaration of conformity).

| Code | Connections | Flow rate ($\Delta p = 0,5$ bar) m ³ /h | Filtration grade μm | Min/max pressure bar | Pieces per package | Kg. per package |
|---------------|-------------|---|-----------------------------|-------------------------|--------------------|-----------------|
| FT020S | ¾" M | 5,9 | 100 | 1,5 - 16 | 6 | 10 |
| FT022S | 1" M | 7,5 | 100 | 1,5 - 16 | 6 | 10 |
| FT024S | 1¼" M | 8,0 | 100 | 1,5 - 16 | 6 | 11 |

Remark: upon request 30 – 50- and 150-micron filtration rating available

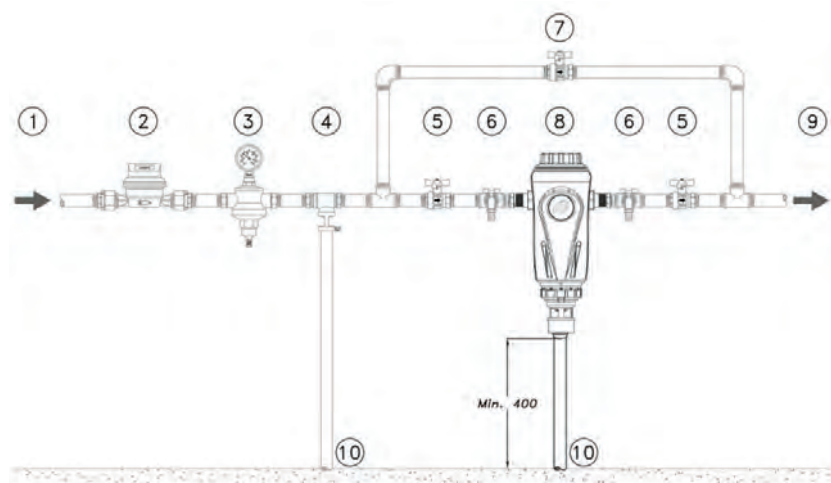
When placing orders, please specify the filtration required rating after the product nr. E. g. FT022S-50. Price will not vary

OVERALL DIMENSIONS EXPRESSED IN MM



| Code | Width - A | Height - B | Depth - C |
|--------|-----------|------------|-----------|
| FT020S | 177 | 344 | 190 |
| FT022S | 179 | 344 | 190 |
| FT024S | 190 | 344 | 190 |

EXAMPLE OF INSTALLATION SCHEME



Legend

1. Raw water inlet
2. Main water meter
3. Pressure reducer (if any)
4. Disconnect (if any)
5. Shut-off valve
6. Samplingtap
7. By-pass valve
8. BravoFIL S filter
9. Treated water outlet
10. Discharge

GUIDELINES FOR CORRECT MAINTENANCE

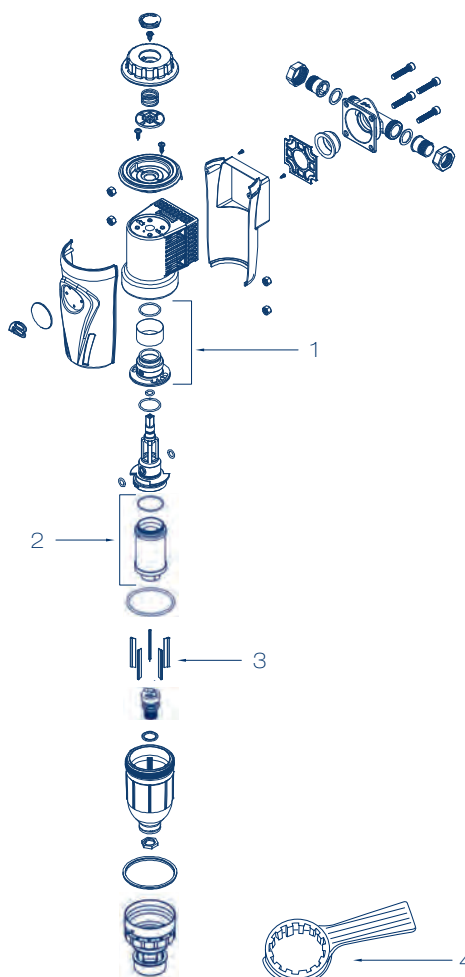


The correct operation and duration of the equipment over time depend on correct installation, proper use and methodical application of the maintenance instructions supplied.

| First year | Second year | Third year | Fourth year | Fifth year |
|--|--|--|--|--|
| CARTRIDGE ASSEMBLY Cleaning | CARTRIDGE ASSEMBLY Cleaning | CARTRIDGE ASSEMBLY Cleaning | CARTRIDGE ASSEMBLY Cleaning | CARTRIDGE ASSEMBLY Change if necessary |
| SANITATION INTERVENTION Annually or for periods of inactivity exceeding 30 days | SANITATION INTERVENTION Annually or for periods of inactivity exceeding 30 days | SANITATION INTERVENTION Annually or for periods of inactivity exceeding 30 days | SANITATION INTERVENTION Annually or for periods of inactivity exceeding 30 days | SANITATION INTERVENTION When replacing the cartridge Annually or for periods of inactivity exceeding 30 days |

RECOMMENDED SPARE PARTS

| Pos. | Code | Description | Q.ty |
|------|--------------------|---|------|
| 1 | 99007027 | Bushing assembly with cartridge reduction 100 µm with o. ring | 1 |
| 2 | 99022009 | Cartridge assembly 100 µm | 1 |
| 3 | 99022005 | Brush L.61 - ¾" - 1" - 1" ¼ (standard) | 5 |
| | 24022002ARG | Brush L.61 with silver thread - ¾" - 1" - 1" ¼ | 5 |
| 4 | 01022020 | Key for sump opening | 1 |



CONSUMABLES AND MAINTENANCE

| Code | Description | Q.ty |
|-----------------|--|------|
| 48170005 | KIT SANITY Sanitizing product for sanitation processes 1 Kg. can - 4 Kg. pack | 1 |
| 48105016 | PEROXIDE ANALYSIS KIT for KIT SANITY The kit allows you to check whether the sanitation was done correctly | 1 |
| 48500007 | Food grade silicone suitable for the lubrication of mechanical parts and o.rings | 1 |

BRAVOFIL

Semi-automatic self cleaning filter



- ✓ cartridge brushing and backwashing system with filtered water
- ✓ 360° rotatable connection plate with built-in non-return valve
- ✓ calendar date marker to indicate the sanitation cycle

CHARACTERISTICS

BravoFIL is a semi-automatic self-cleaning filter with 360° adjustable connection plate.

Offering a patented brushing system performed by using clean water, with simultaneous Backwash cleaning system of the cartridge and discharging of the dirt.

BravoFIL is made with brass connection plate with threads according to EN 10226-1 and EN 228-1, Bowl in Grilamid® (high strength polyamide) and nylon cleaning brushes.

The cartridge is made in stainless steel. The specific structure of the filtering cartridge makes it resistant to pressure shock eliminating problems of deformation and crushing. All models are equipped with tangs and nuts.

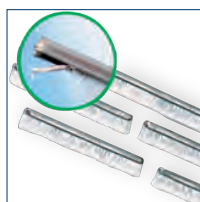
The self-cleaning system starts the backwash with clean water and the cartridge brushing at the same time.

Raw water filtration occurs from OUT to IN of the stainless-steel cartridge.

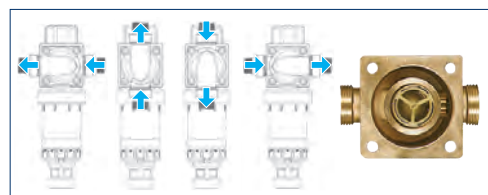
For maintenance and sanitation interventions, it is possible to contact the industry professionals.



Double cleaning internal turbojet cartridge + external brushing



The filter is equipped with 5 brushes for cleaning the filter cartridge; the brushes can be equipped with silver wire to prevent bacterial proliferation inside the filter



360 ° swiveling plate with built-in non-return valve

WHAT WE SUPPLY

BravoFIL is packed in a cardboard box; inlet and outlet connections on adjustable connection plate are supplied with sealing caps preventing any contamination; they need to be removed before installation.

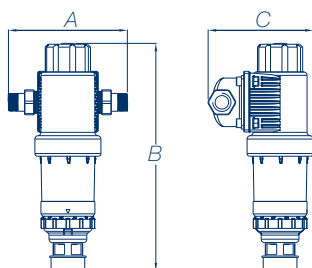
Standard supply includes: BravoFIL S filter, bag with brass connections kit, instructions for use - maintenance - assembly - installation (including declaration of conformity).

| Code | Connections | Flow rate ($\Delta p = 0,5 \text{ bar}$) m^3/h | Filtration grade μm | Min/max pressure bar | Pieces per package | Kg. per package |
|--------------|-------------|--|--------------------------------------|----------------------------|-----------------------|--------------------|
| FT020 | ¾" M | 3,2 | 100 | 1,5 - 10 | 8 | 10 |
| FT022 | 1" M | 4,5 | 100 | 1,5 - 10 | 8 | 10 |
| FT024 | 1¼" M | 5,0 | 100 | 1,5 - 10 | 8 | 11 |

Remark: upon request 30 – 50- and 150-micron filtration rating available

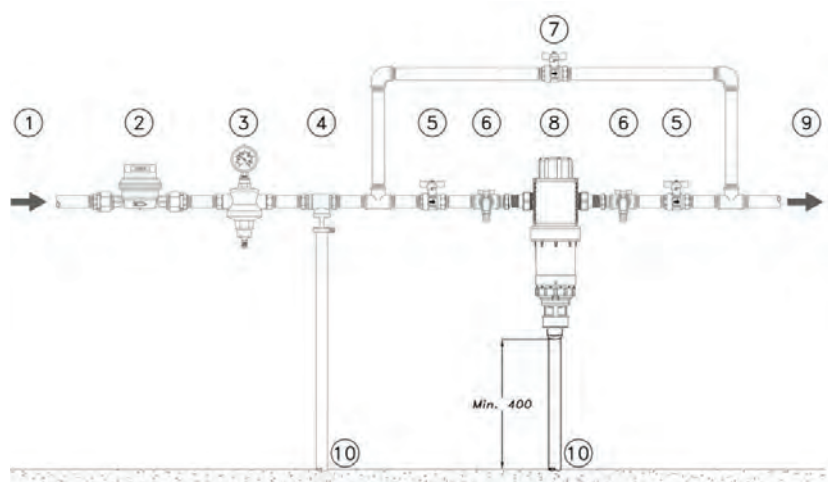
When placing orders, please specify the filtration required rating after the product nr. E. g. FT022-50. Price will not vary

OVERALL DIMENSIONS EXPRESSED IN MM



| Code | Width - A | Height - B | Depth - C |
|-------|-----------|------------|-----------|
| FT020 | 177 | 350 | 136 |
| FT022 | 179 | 350 | 136 |
| FT024 | 190 | 350 | 136 |

EXAMPLE OF INSTALLATION SCHEME



Legend

1. Raw water inlet
2. Main water meter
3. Pressure reducer (if any)
4. Disconnecter (if any)
5. Shut-off valve
6. Sampling tap
7. By-pass valve
8. BravoFIL filter
9. Treated water outlet
10. Discharge

GUIDELINES FOR CORRECT MAINTENANCE

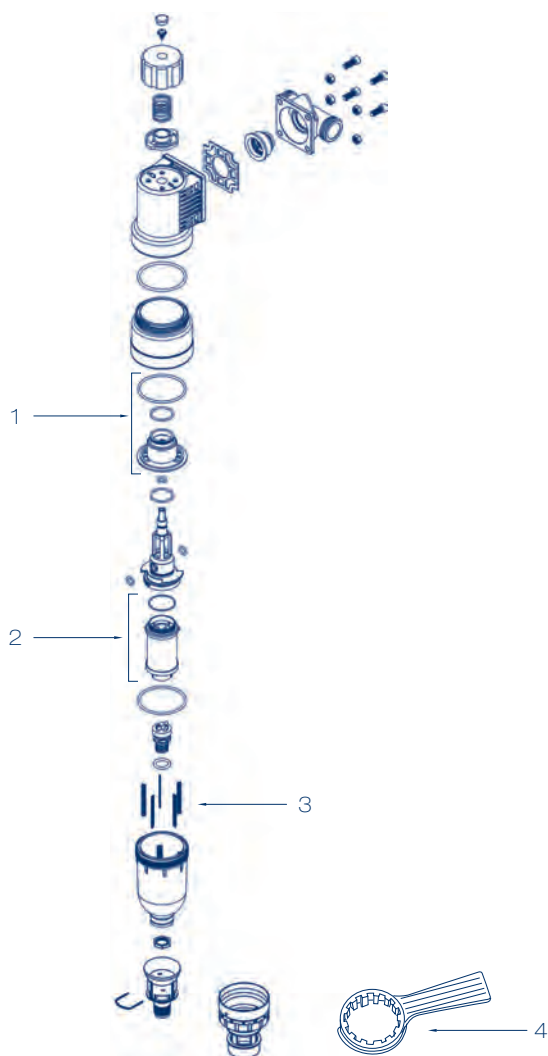


The correct operation and duration of the equipment over time depend on correct installation, proper use and methodical application of the maintenance instructions supplied.

| First year | Second year | Third year | Fourth year | Fifth year |
|--|--|--|--|--|
| CARTRIDGE ASSEMBLY Cleaning | CARTRIDGE ASSEMBLY Cleaning | CARTRIDGE ASSEMBLY Cleaning | CARTRIDGE ASSEMBLY Cleaning | CARTRIDGE ASSEMBLY Change if necessary |
| SANITATION INTERVENTION Annually or for periods of inactivity exceeding 30 days | SANITATION INTERVENTION Annually or for periods of inactivity exceeding 30 days | SANITATION INTERVENTION Annually or for periods of inactivity exceeding 30 days | SANITATION INTERVENTION Annually or for periods of inactivity exceeding 30 days | SANITATION INTERVENTION When replacing the cartridge Annually or for periods of inactivity exceeding 30 days |

RECOMMENDED SPARE PARTS

| Pos. | Code | Description | Q.ty |
|------|--------------------|---|------|
| 1 | 99007014 | Bushing assembly with cartridge 100 µm with o. ring | 1 |
| 2 | 99007007 | Cartridge assembly 100 µm - ¾" - 1" - 1" ¼ (standard) | 1 |
| | 99007008 | Cartridge assembly 30 µm - ¾" - 1" - 1" ¼ | 1 |
| | 99007009 | Cartridge assembly 50 µm - ¾" - 1" - 1" ¼ | 1 |
| | 99007012 | Cartridge assembly 150 µm - ¾" - 1" - 1" ¼ | 1 |
| | 24022002 | Brush L. 61 - ¾" - 1" - 1" ¼ (standard) | 5 |
| 3 | 24022002ARG | Brush L. 61 with silver thread - ¾" - 1" - 1" ¼ | 5 |
| 4 | 01022020 | Key for sump opening | 1 |



CONSUMABLES AND MAINTENANCE

| Code | Description | Q.ty |
|-----------------|---|------|
| 48170005 | KIT SANITY Sanitizing product for sanitation processes 1 Kg. can - 4 Kg. pack | 1 |
| 48105016 | PEROXIDE ANALYSIS KIT for KIT SANITY The kit allows you to check whether the sanitation was done correctly | 1 |
| 48500007 | Food grade silicone suitable for the lubrication of mechanical parts and o.rings | 1 |

BRAVOFIL PLUS

Semi-automatic self cleaning filter
with integrated pressure reducer



- ✓ brushing and washing system of the cartridge with filtered water
- ✓ 360° adjustable connection plate
- ✓ calendar date marker to indicate the sanitation cycle
- ✓ built-in pressure reducer

CHARACTERISTICS

BravoFIL PLUS is a semi-automatic self-cleaning filter with 360° adjustable connection plate and pressure reducer. Offering a patented brushing system performed by using clean water, with simultaneous Backwash cleaning system of the cartridge and discharging of the dirt.

BravoFIL is made with brass connection plate with threads according to EN 10226-1 and EN 228-1, Bowl in Grilamid® (high strength polyamide) and nylon cleaning brushes.

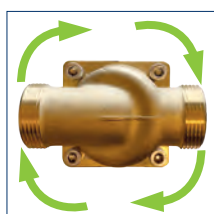
The cartridge is made in stainless steel. The specific structure of the filtering cartridge makes it resistant to pressure shock eliminating problems of deformation and crushing. All models are equipped with tangs and nuts.

The self-cleaning system starts the backwash with clean water and the cartridge brushing at the same time.

Built-in pressure reducer: regulation between 1,5 and 6 bar of outlet pressure. Default settings: 3 bar.

Raw water filtration occurs from OUT to IN of the stainless-steel cartridge.

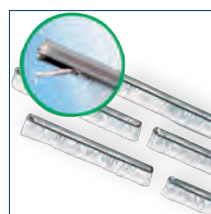
For maintenance and sanitation interventions, it is possible to contact the industry professionals.



360° adjustable
connection plate



Pressure
reducer



The filter is equipped with 5 brushes for cleaning the filter cartridge; the brushes can be equipped with silver wire to prevent bacterial proliferation inside the filter

WHAT WE SUPPLY

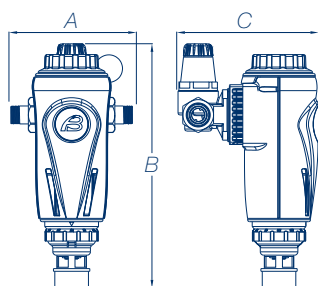
BravoFIL PLUS is packed in a cardboard box, the inlet and outlet of the filter attachment plate are equipped with sealing caps that avoid any external contamination, to be removed at the time of installation).

| Code | Connections | Flow rate ($\Delta p = 0,5$ bar) m ³ /h | Filtration grade μm | Min/max pressure bar | Pieces per package | Kg. per package |
|--------------|-------------|---|--------------------------------|----------------------------|-----------------------|--------------------|
| FT120 | 3/4" M | 2,3 | 89 | 1,5 - 16 | 6 | 12 |
| FT122 | 1" M | 3,6 | 89 | 1,5 - 16 | 6 | 12 |
| FT124 | 1 1/4" M | 5,8 | 89 | 1,5 - 16 | 6 | 12 |

Remark: upon request 30 – 50- and 150-micron filtration rating available

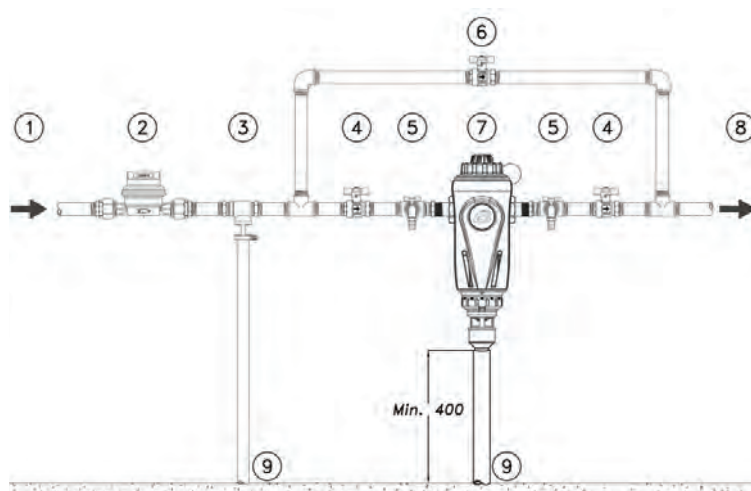
When placing orders, please specify the filtration required rating after the product nr. E. g. FT122-50. Price will not vary

OVERALL DIMENSIONS EXPRESSED IN MM



| Code | Width - A | Height - B | Depth - C |
|-------|-----------|------------|-----------|
| FT120 | 177 | 358 | 209 |
| FT122 | 179 | 358 | 209 |
| FT124 | 190 | 358 | 209 |

EXAMPLE OF INSTALLATION SCHEME



Legend

1. Raw water inlet
2. Main water meter
3. Disconnect
4. Shut-off valve
5. Sampling tap
6. By-pass valve
7. BravoFIL PLUS filter
8. Treated water outlet
9. Discharge

GUIDELINES FOR CORRECT MAINTENANCE

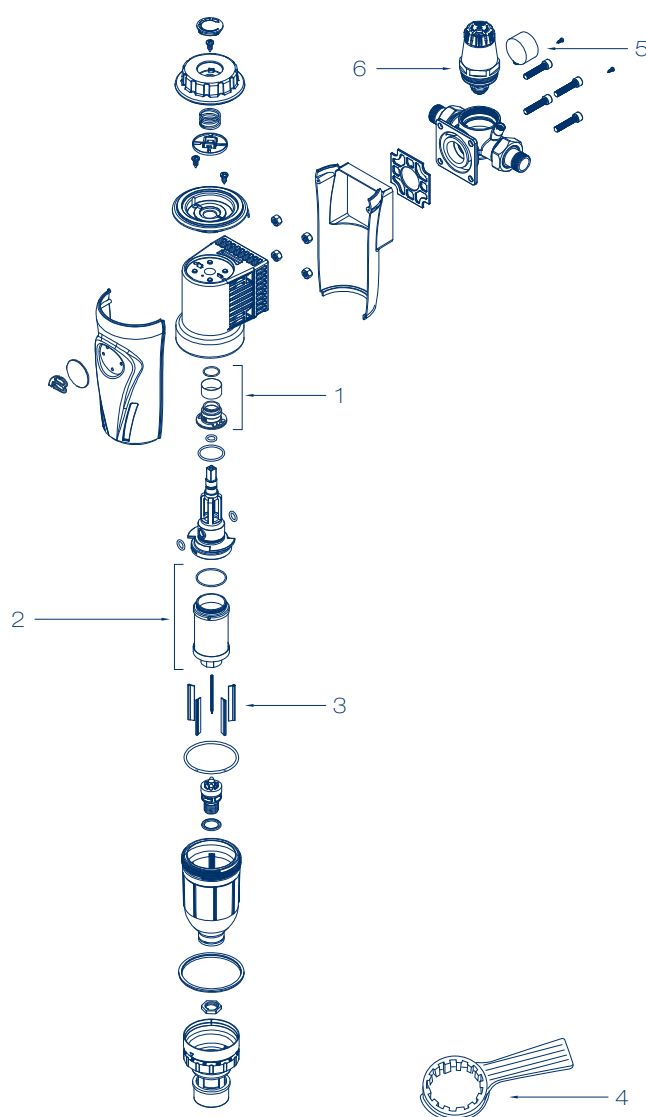


The correct operation and duration of the equipment over time depend on correct installation, proper use and methodical application of the maintenance instructions supplied.

| First year | Second year | Third year | Fourth year | Fifth year |
|--|--|--|--|--|
| CARTRIDGE ASSEMBLY Cleaning | CARTRIDGE ASSEMBLY Cleaning | CARTRIDGE ASSEMBLY Cleaning | CARTRIDGE ASSEMBLY Cleaning | CARTRIDGE ASSEMBLY Change if necessary |
| SANITATION INTERVENTION Annually or for periods of inactivity exceeding 30 days | SANITATION INTERVENTION Annually or for periods of inactivity exceeding 30 days | SANITATION INTERVENTION Annually or for periods of inactivity exceeding 30 days | SANITATION INTERVENTION Annually or for periods of inactivity exceeding 30 days | SANITATION INTERVENTION When replacing the cartridge Annually or for periods of inactivity exceeding 30 days |

RECOMMENDED SPARE PARTS

| Pos. | Code | Description | Q.ty |
|------|--------------------|---|------|
| 1 | 99007027 | Bushing assembly cartridge 100 µm with o. ring | 1 |
| 2 | 99007007 | Cartridge assembly 100 µm - ¾" - 1" - 1" ¼ (standard) | 1 |
| | 99007008 | Cartridge assembly 30 µm - ¾" - 1" - 1" ¼ | 1 |
| | 99007009 | Cartridge assembly 50 µm - ¾" - 1" - 1" ¼ | 1 |
| | 99007012 | Cartridge assembly 150 µm - ¾" - 1" - 1" ¼ | 1 |
| 3 | 24022002 | Brush L. 61 | 5 |
| | 24022002ARG | Brush L. 61 with silver thread - ¾" - 1" - 1" ¼ | 5 |
| 4 | 01022020 | Sump opening key | 1 |
| 5 | 23022002 | Pressure gauge D. 40 - 0-12 bar | 1 |
| 6 | 23022029 | Complete pressure reducer assembly | 1 |



CONSUMABLES AND MAINTENANCE

| Code | Description | Q.ty |
|----------|--|------|
| 48170005 | KIT SANITY Sanitizing product for sanitation processes 1 Kg. can - 4 Kg. pack | 1 |
| 48105016 | PEROXIDE ANALYSIS KIT for KIT SANITY The kit allows you to check whether the sanitation was done correctly | 1 |
| 48500007 | Food grade silicone suitable for the lubrication of mechanical parts and o.rings | 1 |

BRAVOMATIC

Automatic self-cleaning filter



- ✓ automatic backwash with filtered water and brushing of the cartridge
- ✓ customized backwash programming; wash cycle with 3 rotation and internal lighting
- ✓ external cover of the equipment for UV protection of the filter cartridge
- ✓ date ring to indicate the sanitation cycle

CHARACTERISTICS

BravoMATIC is an automatic self-cleaning filter with 360° adjustable connection plate and pressure reducer.

Cleaning of the stainless-steel cartridge occurs by means of a patented brushing system performed by using clean water, with simultaneous Backwash cleaning system and automatic discharging of the dirt.

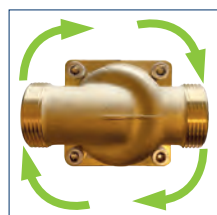
BravoMATIC is made with brass connection plate with threads according to EN 10226-1 and EN 228-1, Bowl in Grilamid® (high strength polyamide) and nylon cleaning brushes.

The cartridge is in stainless steel welded on an expanded support mesh. The specific structure of the filtering cartridge makes it resistant to pressure shock eliminating problems of deformation and crushing. All models are equipped with tangs and nuts.

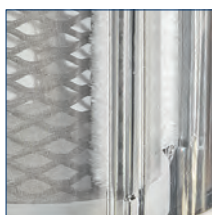
The BravoMATIC washing cycle involves brushing and backwashing the cartridge; the automatic opening of the drain valve (located on the bottom of the vessel) creates a high-speed tangential flow that removes the impurities accumulated in the filter vessel.

BravoMATIC is available in a single version with programmable operating cycles; a wash cycle performs 3 complete rotations. BravoMATIC filters the water from the outside to the inside of the filter cartridge.

For maintenance and sanitation interventions, it is possible to contact the industry professionals.



360° adjustable connection plate



Automatic cleaning of the filter element



Interior lighting

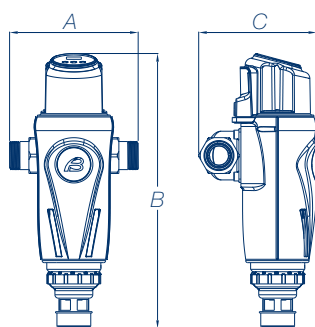
WHAT WE SUPPLY

BravoMATIC is packed in a cardboard box; inlet and outlet connections on adjustable connection plate are supplied with sealing caps preventing any contamination; they need to be removed before installation.

Standard supply includes BravoMATIC filter, bag with brass connections kit, power supply, instructions for use - maintenance - assembly - installation (including declaration of conformity).

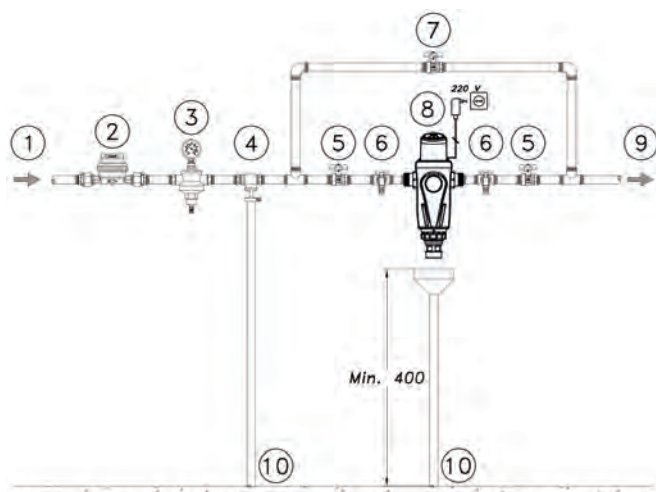
| Code | Connections | Flow rate ($\Delta p = 0,5$ bar) m ³ /h | Filtration grade μm | Min/max pressure bar | Pieces per package | Kg. per package |
|--------------|-------------|---|--------------------------------|----------------------------|-----------------------|--------------------|
| FT030 | ¾" M | 5,9 | 100 | 1,5 - 16 | 1 | 3 |
| FT032 | 1" M | 7,5 | 100 | 1,5 - 16 | 1 | 3 |
| FT034 | 1¼" M | 8,0 | 100 | 1,5 - 16 | 1 | 3,5 |

OVERALL DIMENSIONS EXPRESSED IN MM



| Code | Width - A | Height - B | Depth - C |
|-------|-----------|------------|-----------|
| FT030 | 177 | 405 | 175 |
| FT032 | 179 | 405 | 175 |
| FT034 | 190 | 405 | 175 |

EXAMPLE OF INSTALLATION SCHEME



Legend

1. Raw water inlet
2. Main water meter
3. Pressure reducer (if any)
4. Disconnect (if any)
5. Shut-off valve
6. Sampling tap
7. By-pass valve
8. BravoMATIC filter
9. Treated water outlet
10. Discharge

GUIDELINES FOR CORRECT MAINTENANCE

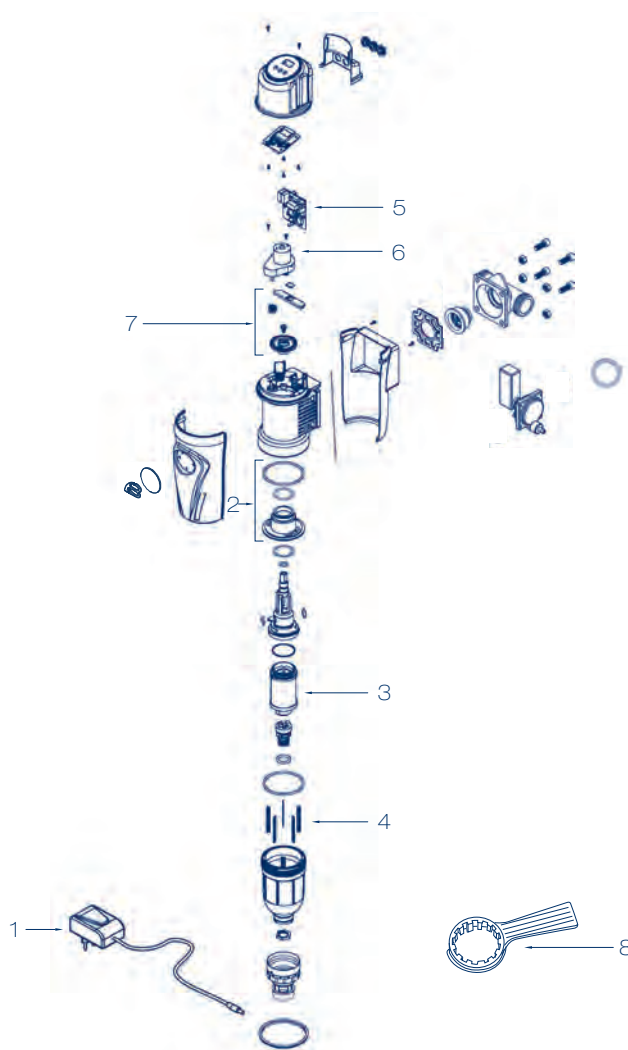


The correct operation and duration of the equipment over time depend on correct installation, proper use and methodical application of the maintenance instructions supplied.

| First year | Second year | Third year | Fourth year | Fifth year |
|--|--|--|--|--|
| CARTRIDGE ASSEMBLY Cleaning | CARTRIDGE ASSEMBLY Cleaning | CARTRIDGE ASSEMBLY Cleaning | CARTRIDGE ASSEMBLY Cleaning | CARTRIDGE ASSEMBLY Change if necessary |
| SANITATION INTERVENTION Annually or for periods of inactivity exceeding 30 days | SANITATION INTERVENTION Annually or for periods of inactivity exceeding 30 days | SANITATION INTERVENTION Annually or for periods of inactivity exceeding 30 days | SANITATION INTERVENTION Annually or for periods of inactivity exceeding 30 days | SANITATION INTERVENTION When replacing the cartridge Annually or for periods of inactivity exceeding 30 days |

RECOMMENDED SPARE PARTS

| Pos. | Code | Description | Q.ty |
|------|--------------------|--|------|
| 1 | 99022030 | Power supply assembly 230V | 1 |
| | 23022043 | Universal power supply 100-240V (Cina - Australia) | 1 |
| 2 | 99007014 | Bushing assembly 100 µm cartridge with o. ring | 1 |
| 3 | 99022009 | Cartridge assembly 100 µm (standard) | 1 |
| | 99007008 | Cartridge assembly 30 µm - ¾" - 1" - 1" ¼ | 1 |
| | 99007009 | Cartridge assembly 50 µm - ¾" - 1" - 1" ¼ | 1 |
| | 99007012 | Cartridge assembly 150 µm - ¾" - 1" - 1" ¼ | 1 |
| 4 | 99022005 | Brush L. 61 - ¾" - 1" - 1" ¼ | 5 |
| | 24022002ARG | Brush L. 61 with silver thread - ¾" - 1" - 1" ¼ | 5 |
| 5 | 23022040 | Circuit | 1 |
| 6 | 99003025 | Gearmotor assembly | 1 |
| 7 | 99022024 | Movement gears assembly | 1 |
| 8 | 01022020 | Key for sump opening | 1 |



CONSUMABLES AND MAINTENANCE

| Code | Description | Q.ty |
|-----------------|--|------|
| 48170005 | KIT SANITY Sanitizing product for sanitation processes 1 Kg. can - 4 Kg. pack | 1 |
| 48105016 | PEROXIDE ANALYSIS KIT for KIT SANITY The kit allows you to check whether the sanitation was done correctly | 1 |
| 48500007 | Food grade silicone suitable for the lubrication of mechanical parts and o.rings | 1 |

BRAVOMAX-M

Semi-automatic self cleaning filter



- ✓ brushing system and dirty discharge in a single operation
- ✓ pressure gauges
- ✓ high flow rates

CHARACTERISTICS

BravoMAX-M is a semi-automatic self-cleaning filter ideal for the filtration of high water flows, with cartridge brushing system and dirt discharge.

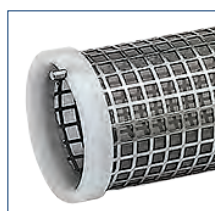
BravoMAX-M is made entirely of stainless steel. The cartridge is made of stainless steel welded to an expanded support mesh. The specific structure of the cartridge makes it resistant to pressure shocks, reducing the problem of deformation and crushing. The nylon brushes have a stainless-steel support.

It is complete with gauges for detecting pressure, and available in the version with threaded and flanged connections.

The washing operation is started by turning the upper knob clockwise: this movement activates, with each click, the brushing and draining system. The opening of the drain valve (located at the bottom of the vessel) creates a high-speed tangential flow that removes the impurities accumulated in the filter vessel.

BravoMAX-M filters the water from the inside to the outside of the filter cartridge.

For maintenance and sanitation interventions, it is possible to contact the industry professionals.



304 stainless steel filter element



Pressure gauge for detecting decrease in pressure which indicates the need to clean the cartridge



Flanged connections

WHAT WE SUPPLY

BravoMAX-M is packed in a wooden box.

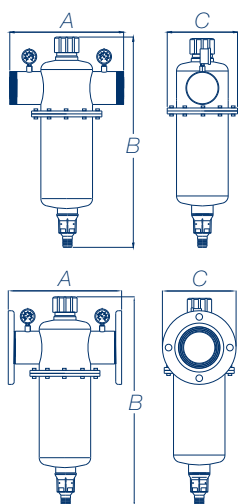
The standard supply includes: BravoMAX-M filter, 2# flanges (for flanged models), 2# glycerine pressure gauges, instructions for use and management, declaration of installation form (including warranty certificate).

| Code | Connections | Flow rate ($\Delta p = 0,5$ bar) m ³ /h | Filtration grade μm | Min/max pressure bar | Pieces per package | Kg. per package |
|--------------|-------------|---|-----------------------------|-------------------------|--------------------|-----------------|
| FT040 | 1" 1/2 M | 30,0 | 150 | 1,8 - 10 | 1 | 5,0 |
| FT042 | 2" M | 40,0 | 150 | 1,8 - 10 | 1 | 5,3 |
| FT044 | 2" 1/2 M | 49,6 | 150 | 1,8 - 10 | 1 | 7,2 |
| FT046 | 3" M | 54,0 | 150 | 1,8 - 10 | 1 | 9,0 |
| FT140 | DN40 | 30,0 | 150 | 1,8 - 10 | 1 | 6,0 |
| FT142 | DN50 | 40,0 | 150 | 1,8 - 10 | 1 | 6,3 |
| FT144 | DN65 | 49,6 | 150 | 1,8 - 10 | 1 | 8,2 |
| FT146 | DN80 | 54,0 | 150 | 1,8 - 10 | 1 | 10,0 |

Notes: 100 - 200-micron filtration degree on request

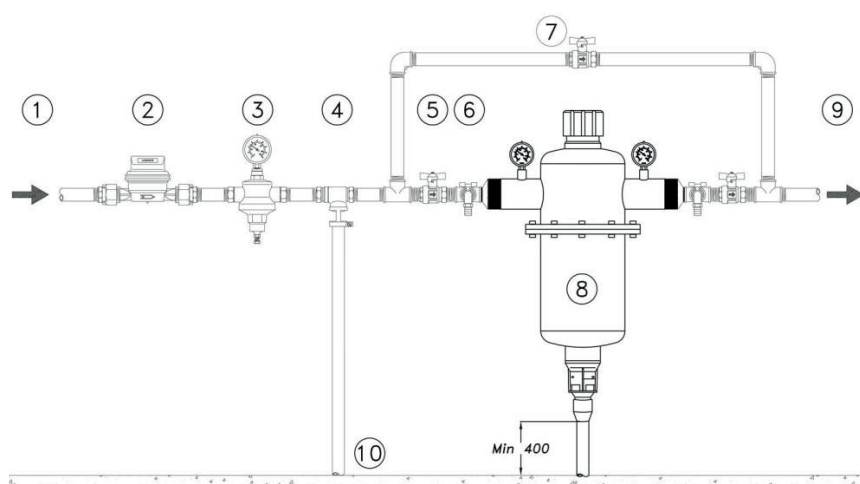
For orders, enter the degree of filtration after the code; Eg: FT044-200 - The price remains unchanged.

OVERALL DIMENSIONS EXPRESSED IN MM



| Code | Width - A | Height - B | Depth - C |
|---------------|-----------|------------|-----------|
| FT040 - FT140 | 310 | 510 | 190 |
| FT042 - FT142 | 310 | 510 | 190 |
| FT044 - FT144 | 310 | 578 | 190 |
| FT046 - FT146 | 310 | 578 | 190 |

EXAMPLE OF INSTALLATION SCHEME



Legend

1. Raw water inlet
2. Main water meter
3. Pressure reducer (if any)
4. Disconnecter (if any)
5. Shut-off valve
6. Samplingtap
7. By-pass valve
8. BravoMAX-M filter
9. Treated water outlet
10. Discharge

GUIDELINES FOR CORRECT MAINTENANCE

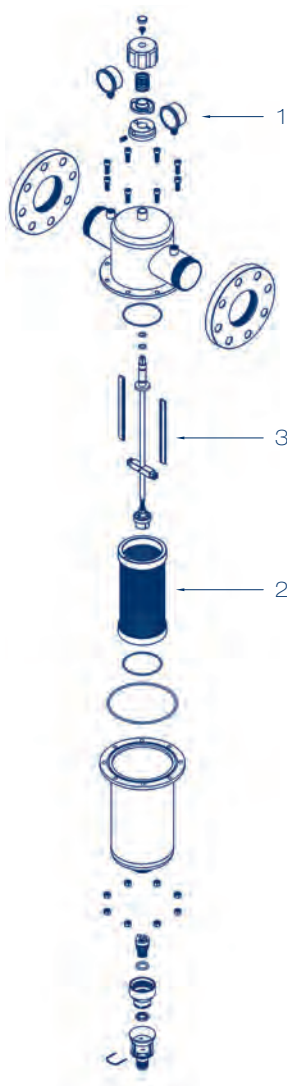


The correct operation and duration of the equipment over time depend on correct installation, proper use and methodical application of the maintenance instructions supplied.

| First year | Second year | Third year | Fourth year | Fifth year |
|--|--|--|--|--|
| CARTRIDGE ASSEMBLY Cleaning | CARTRIDGE ASSEMBLY Cleaning | CARTRIDGE ASSEMBLY Cleaning | CARTRIDGE ASSEMBLY Cleaning | CARTRIDGE ASSEMBLY Change if necessary |
| SANITATION INTERVENTION Annually or for periods of inactivity exceeding 30 days | SANITATION INTERVENTION Annually or for periods of inactivity exceeding 30 days | SANITATION INTERVENTION Annually or for periods of inactivity exceeding 30 days | SANITATION INTERVENTION Annually or for periods of inactivity exceeding 30 days | SANITATION INTERVENTION When replacing the cartridge Annually or for periods of inactivity exceeding 30 days |

RECOMMENDED SPARE PARTS

| Pos. | Code | Description | Q.ty |
|------|---------------------|--|------|
| 1 | 23022013 | Pressure gauge D. 50 - 0-16 bar | 2 |
| 2 | 11008042 | Cartridge assembly 150 µm - 1" ½ - 2" / DN40-50 (standard) | 1 |
| | 11008042-50 | Cartridge assembly 50 µm - 1" ½ - 2" / DN40-50 | 1 |
| | 11008042-100 | Cartridge assembly 100 µm - 1" ½ - 2" / DN40-50 | 1 |
| | 11008042-200 | Cartridge assembly 200 µm - 1" ½ - 2" / DN40-50 | 1 |
| | 11008052 | Cartridge assembly 150 µm - 2" ½ - 3" / DN65-80 (standard) | 1 |
| | 11008052-50 | Cartridge assembly 50 µm - 2" ½ - 3" / DN65-80 | 1 |
| | 11008052-100 | Cartridge assembly 100 µm - 2" ½ - 3" / DN65-80 | 1 |
| | 11008052-200 | Cartridge assembly 200 µm - 2" ½ - 3" / DN65-80 | 1 |
| 3 | 24022005ARG | Brush L.110 for 1" ½ - 2" filter | 2 |
| | 24022006ARG | Brush L.170 for 2" ½ - 3" filter | 2 |

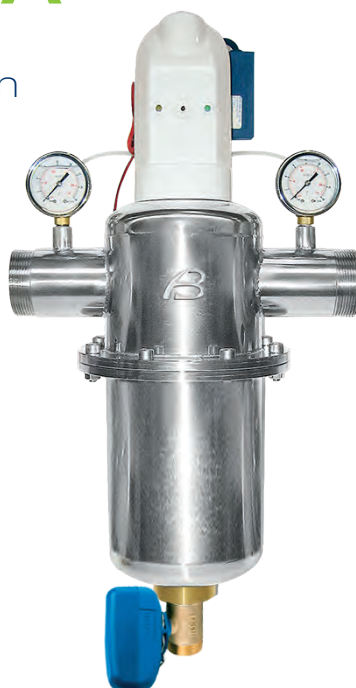


CONSUMABLES AND MAINTENANCE

| Code | Description | Q.ty |
|-----------------|---|------|
| 48170005 | KIT SANITY Sanitizing product for sanitation processes 1 Kg. can - 4 Kg. pack | 1 |
| 48105016 | PEROXIDE ANALYSIS KIT for KIT SANITY The kit allows you to check whether the sanitation was done correctly | 1 |
| 48500007 | Food grade silicone suitable for the lubrication of mechanical parts and o.rings | 1 |

BRAVOMAX-A

Automatic self cleaning filter
with differential pressure switch
and motorized solenoid
discharge valve
12 - 24 - 36 - 48 h wash



- ✓ automatic brushing and dirty discharge system pressure gauges
- ✓ high flow rates
- ✓ electronic management with timed program
- ✓ built-in pressure differential with washing intervention ΔP 1 bar

CHARACTERISTICS

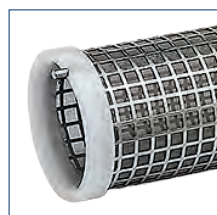
BravoMAX-A is an automatic self-cleaning filter with pressure differential and motorized drain solenoid valve; ideal for filtration of high-water flows, with cartridge brushing system and dirt discharge.

BravoMAX-A is made entirely of stainless steel. The cartridge is made of stainless steel welded to an expanded support mesh. The specific structure of the cartridge makes it resistant to pressure shocks, reducing the problem of deformation and crushing. The nylon brushes have a stainless-steel support.

It is provided with pressure gauges for detecting pressure, and available in the version with threaded or flanged connections. BravoMAX-A is managed by a time program and electro-hydraulic differential for cleaning the filter cartridge, with simultaneous brushing and dirty discharging; equipped with a motorized solenoid valve for opening and closing of the drain. The pressure differential continuously checks the degree of clogging of the filter element and activates the backwash when a pressure difference $\Delta P = 0.8$ Bar occurs; this device therefore allows to avoid clogging of the filter. The washing operation activates the brushing and dirt discharge system creating a high-speed tangential flow that removes the impurities accumulated in the filter vessel.

BravoMAX-A filters the water from the inside to the outside of the filter cartridge.

For maintenance and sanitation interventions, it is possible to contact the industry professionals.



304 stainless steel filter element



Motorized valve for closing / opening filter discharge



Flanged connections

WHAT WE SUPPLY

BravoMAX-A is packed in a wooden box.

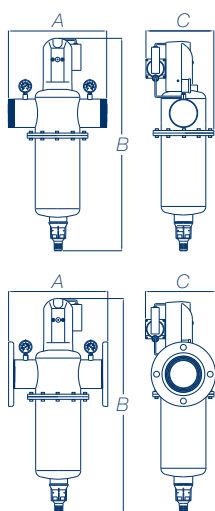
The standard supply includes: BravoMAX-A filter, power supply, 2# flanges (for flanged models), 2# glycerine pressure gauges, instructions for use and management, declaration of installation form (including warranty certificate).

| Code | Connections | Flow rate ($\Delta p = 0,5$ bar) m ³ /h | Filtration grade μm | Min/max pressure bar | Pieces per package | Kg. per package |
|---------------|-------------|---|-----------------------------|-------------------------|--------------------|-----------------|
| FT060E | 1" 1/2 M | 30,0 | 150 | 2,0 - 10 | 1 | 7,2 |
| FT062E | 2" M | 40,0 | 150 | 2,0 - 10 | 1 | 7,5 |
| FT064E | 2" 1/2 M | 49,6 | 150 | 2,0 - 10 | 1 | 10,0 |
| FT066E | 3" M | 54,0 | 150 | 2,0 - 10 | 1 | 13,0 |
| FT160E | DN40 | 30,0 | 150 | 2,0 - 10 | 1 | 8,2 |
| FT162E | DN50 | 40,0 | 150 | 2,0 - 10 | 1 | 8,5 |
| FT164E | DN65 | 49,6 | 150 | 2,0 - 10 | 1 | 11,0 |
| FT166E | DN80 | 54,0 | 150 | 2,0 - 10 | 1 | 14,0 |

Notes: 100 - 200-micron filtration degree on request

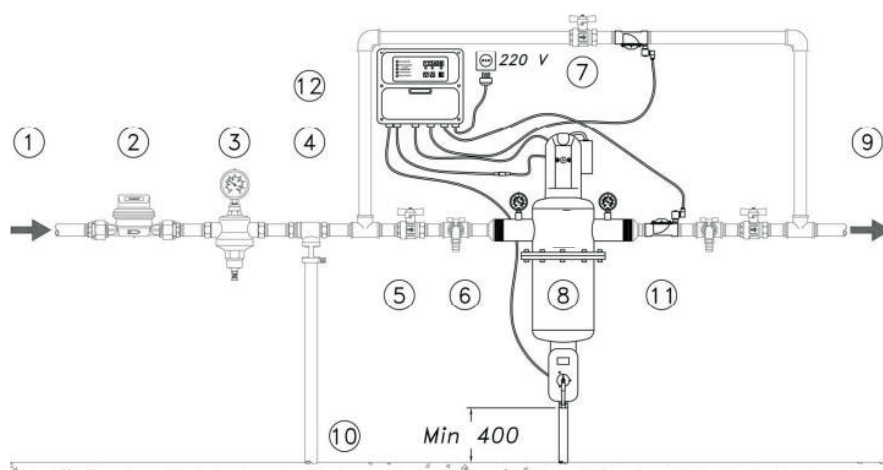
For orders, enter the degree of filtration after the code; Eg: FT044-200 - The price remains unchanged.

OVERALL DIMENSIONS EXPRESSED IN MM



| Code | Width - A | Height - B | Depth - C |
|-----------------|-----------|------------|-----------|
| FT060E - FT160E | 310 | 640 | 220 |
| FT062E - FT162E | 310 | 640 | 220 |
| FT064E - FT164E | 310 | 700 | 220 |
| FT066E - FT166E | 310 | 700 | 220 |

EXAMPLE OF INSTALLATION SCHEME



Legend

1. Raw water inlet
2. Main water meter
3. Pressure reducer
4. Disconnect
5. Shut-off valve
6. Sampling tap
7. By-pass valve
8. BravoMAX-A filter
9. Treated water outlet
10. Discharge
11. Solenoid valves
12. Control panel

GUIDELINES FOR CORRECT MAINTENANCE

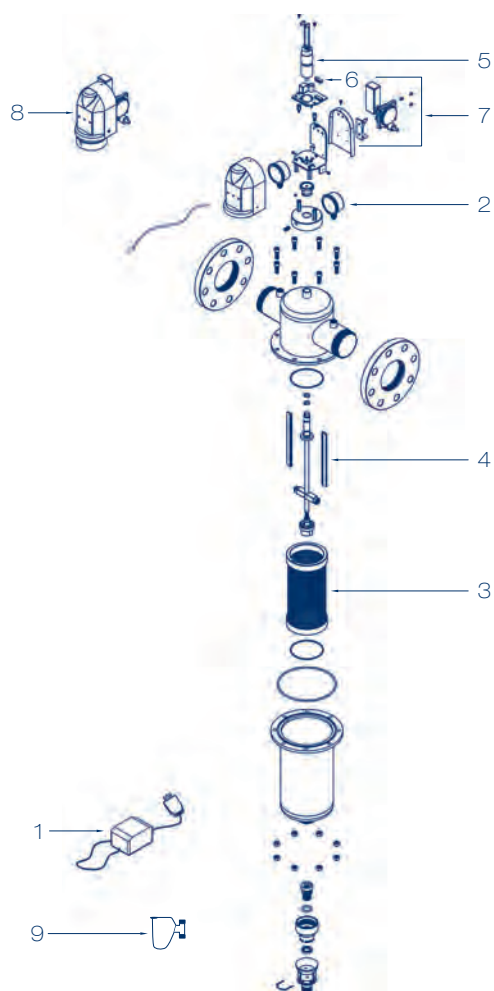


The correct operation and duration of the equipment over time depend on correct installation, proper use and methodical application of the maintenance instructions supplied.

| First year | Second year | Third year | Fourth year | Fifth year |
|--|--|--|--|--|
| CARTRIDGE ASSEMBLY Cleaning | CARTRIDGE ASSEMBLY Cleaning | CARTRIDGE ASSEMBLY Cleaning | CARTRIDGE ASSEMBLY Cleaning | CARTRIDGE ASSEMBLY Change if necessary |
| SANITATION INTERVENTION Annually or for periods of inactivity exceeding 30 days | SANITATION INTERVENTION Annually or for periods of inactivity exceeding 30 days | SANITATION INTERVENTION Annually or for periods of inactivity exceeding 30 days | SANITATION INTERVENTION Annually or for periods of inactivity exceeding 30 days | SANITATION INTERVENTION When replacing the cartridge Annually or for periods of inactivity exceeding 30 days |

RECOMMENDED SPARE PARTS

| Pos. | Code | Description | Q.ty |
|------|---------------------|--|------|
| 1 | 23022006 | Power supply 230V | 1 |
| 2 | 99008025 | Pressure gauge assembly with connector | 2 |
| 3 | 11008042 | Cartridge assembly 150 µm - 1" ½ - 2" / DN40-50 (standard) | 1 |
| | 11008042-50 | Cartridge assembly 50 µm - 1" ½ - 2" / DN40-50 | 1 |
| | 11008042-200 | Cartridge assembly 200 µm 1" ½ - 2" - DN40-50 | 1 |
| | 11008042-100 | Cartridge assembly 100 µm -1" ½-2" / DN40-50 | 1 |
| | 11008052 | Cartridge assembly 150 µm - 2" ½ - 3" / DN65-80 (standard) | 1 |
| | 11008052-50 | Cartridge assembly 50 µm - 2" ½ - 3" / DN65-80 | 1 |
| | 11008052-100 | Cartridge assembly 100 µm - 2" ½ - 3" / DN65-80 | 1 |
| | 11008052-200 | Cartridge assembly 200 µm - 2" ½ - 3" / DN65-80 | 1 |
| 4 | 24022005ARG | Brush L.110 filter 1" ½ - 2" | 2 |
| | 24022006ARG | Brush L.170 filter 2" ½ - 3" | 2 |
| 5 | 99020003 | Gearmotor assembly | 1 |
| 6 | 23022018 | Circuit microchip - program 10 cycles 12 hours | 1 |
| 7 | 99020005 | Pressure differential assembly | 1 |
| 8 | 99008024 | Electronic head assembly | 1 |
| 9 | 23022038 | Drain solenoid valve - 24V (supplied from 05/2018) | 1 |



CONSUMABLES AND MAINTENANCE

| Code | Description | Q.ty |
|-----------------|--|------|
| 48170005 | KIT SANITY Sanitizing product for sanitation processes 1 Kg. can - 4 Kg. pack | 1 |
| 48105016 | PEROXIDE ANALYSIS KIT for KIT SANITY The kit allows you to check whether the sanitation was done correctly | 1 |
| 48500007 | Food grade silicone suitable for the lubrication of mechanical parts and o.rings | 1 |

BRAVOCALOR

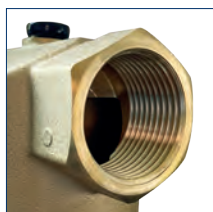
Manual cleaning filter
Temperature 5/90 °C



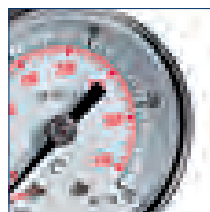
- ✓ suitable for high temperatures
- ✓ small size
- ✓ dirt discharge

CHARACTERISTICS

BravoCALOR is a manual cleaning filter for hot water 5/90 ° C, of compact dimensions and equipped with a drain cock. BravoCALOR has brass connection head and vessel with threads according to the EN 10226-1 and EN 228-1 Standards; it is available in two versions, with or without pressure gauge (scale 0-25 bar); BravoCALOR is equipped with an AISI 304 stainless steel filter cartridge. The cleaning of the filter is easy to carry out by simply opening the drain cock. For maintenance and sanitation interventions, it is possible to contact the industry professionals.



Thread according to
EN 10226-1 and
EN 228-1 Standards



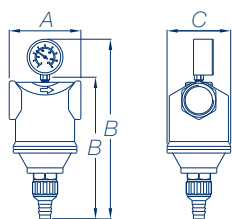
Withstands up to 90 ° C

WHAT WE SUPPLY

BravoCALOR is packed in a plastic bag and placed inside a smooth cardboard box. The standard dotations includes: BravoCALOR filter, instructions for use (including declaration of conformity).

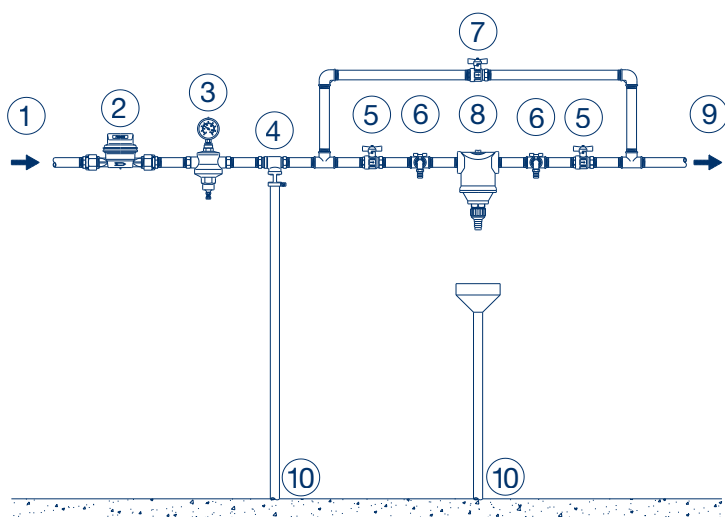
| Code | Connections | Flow rate ($\Delta p = 0,5$ bar) m ³ /h | Filtration grade μm | Min/max pressure bar | Pieces per package | Kg. per package |
|--------------|-------------|---|--------------------------------|----------------------------|-----------------------|--------------------|
| FT220 | 1/2" F | 3,0 | 89 | 1,5 - 16 | 12 | 13 |
| FT222 | 3/4" F | 4,0 | 89 | 1,5 - 16 | 12 | 13 |
| FT224 | 1" F | 8,1 | 89 | 1,5 - 16 | 12 | 13 |

OVERALL DIMENSIONS EXPRESSED IN MM



| Code | Width - A | Height - B | Depth - C |
|-------|-----------|------------|-----------|
| FT230 | 80 | 160 | 71 |
| FT232 | 80 | 160 | 71 |
| FT234 | 80 | 160 | 71 |
| FT220 | 80 | 205 | 71 |
| FT222 | 80 | 205 | 71 |
| FT224 | 80 | 205 | 71 |

EXAMPLE OF INSTALLATION SCHEME



Legend

1. Raw water inlet
2. Main water meter
3. Pressure reducer (if any)
4. Disconnect (if any)
5. Shut-off valve
6. Sampling tap
7. By-pass valve
8. BravoCALOR filter
9. Treated water outlet
10. Discharge

GUIDELINES FOR CORRECT MAINTENANCE

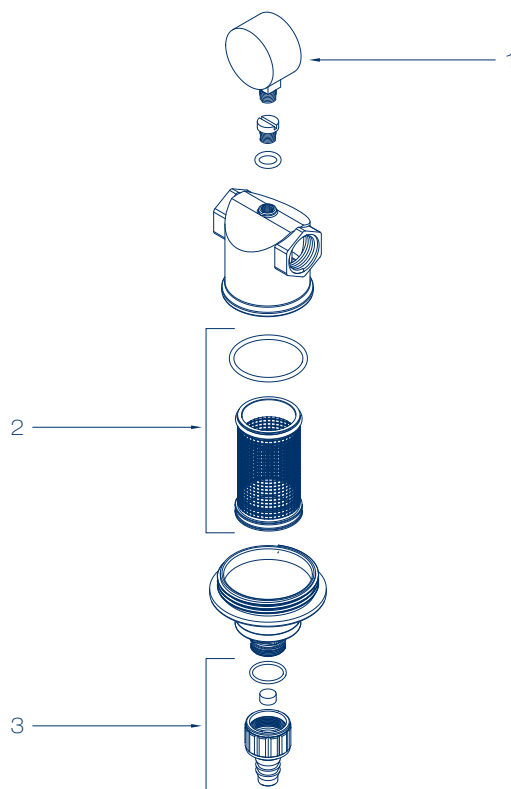


The correct operation and duration of the equipment over time depend on correct installation, proper use and methodical application of the maintenance instructions supplied.

| First year | Second year | Third year | Fourth year | Fifth year |
|--|--|--|--|--|
| CARTRIDGES Cleaning every six months or as needed | CARTRIDGES Cleaning every six months or as needed | CARTRIDGES Cleaning every six months or as needed | CARTRIDGES Cleaning every six months or as needed | CARTRIDGES Change if necessary |
| SANITATION INTERVENTION (if installed cold water inlet) Annually or for periods of inactivity longer than 30 days | SANITATION INTERVENTION (if installed cold water inlet) Annually or for periods of inactivity longer than 30 days | SANITATION INTERVENTION (if installed cold water inlet) Annually or for periods of inactivity longer than 30 days | SANITATION INTERVENTION (if installed cold water inlet) Annually or for periods of inactivity longer than 30 days | SANITATION INTERVENTION (if installed cold water inlet) Annually or for periods of inactivity longer than 30 days |

RECOMMENDED SPARE PARTS

| Pos. | Code | Description | Q.ty |
|------|----------|--|------|
| 1 | 23022004 | Pressure gauge Ø 40 - 0-25 bar - 120°C | 1 |
| 2 | 99009002 | 89 µm cartridge assembly with o. ring | 1 |
| 3 | 99009004 | Drain faucet assembly with o. ring and pastiglia | 1 |



5 GOOD REASONS TO INSTALL KIT FACILE

All in just 21 cm to save time, space, and money. The Italian D.M. 25/12 requires that the plumbing systems made for the installation of water treatment equipment to be equipped with a by-pass device and taps for taking water samples upstream and downstream of the equipment.

Respecting these requirements is no longer a problem. KIT FACILE combines in a single device a softener by-pass and two predispositions for taps to take a water sample to check the effective quality of water before and after the treatment. It is designed to simplify and standardize the construction of all water treatment installations prescribed by current regulations such as, for example, filters, softeners, and dosing pumps. It is equipped, in addition to the provisions of the D.M. 25/12, of an easy-to-use water hardness mixer.



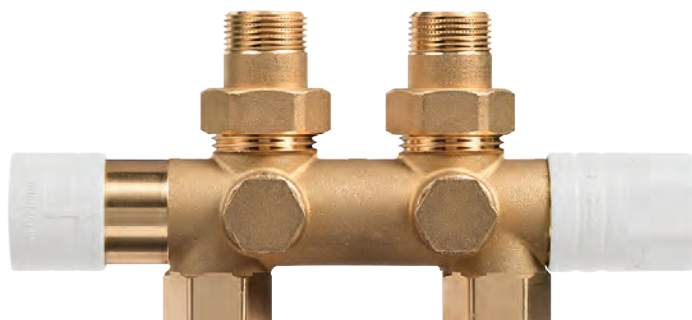


- **KIT FACILE**

SIMPLIFIES AND STANDARDIZES THE REALIZATION OF ALL INSTALLATIONS OF TREATMENT DEVICES AT THE POINT OF ENTRY

KIT FACILE

All-in-one multifunctional device



CHARACTERISTICS

Kit Facile is a multifunctional device to facilitate and standardize the installation of Acqua Brevetti systems.

Kit Facile is made with brass body, by-pass button and hardness adjustment valve; nuts and tangs are supplied for the hydraulic connection. The white pressure knob marked by an arrow accompanied by the wording "Push for by-pass" and the by-pass button. The white screw knob marked with a double arrow and the symbols "+" and "-" and the valve for adjusting the hardness. In the front part of Kit Facile there are the predispositions for the assembly of two sampling taps. The taps allow you to take water upstream and downstream of the treatment to check its characteristics (degree of softening, dosage of anti-scaling and anti-corrosive).

For maintenance and sanitation interventions, it is possible to contact the industry professionals.



Without Kit Facile



With Kit Facile

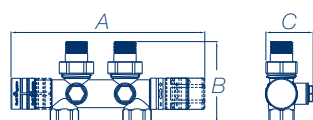
WHAT WE SUPPLY

KIT FACILE is packed in a plastic bag and placed inside a smooth cardboard box.

The standard supply includes KIT FACILE with 2# 1/2" plugs, 2# 3/4" nuts and shanks, instruction manual. The sampling taps are excluded from the supply

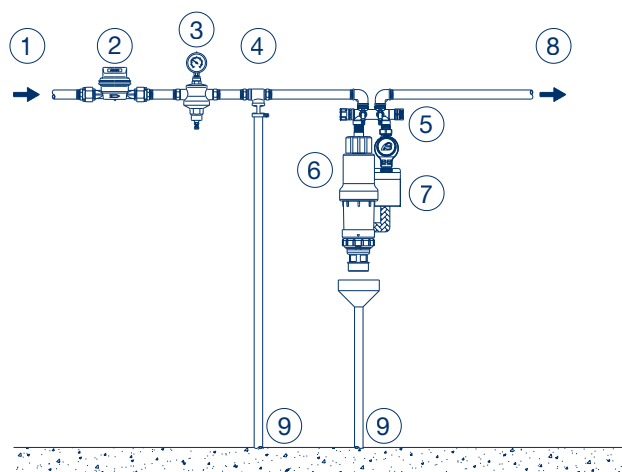
| Code | Model | Connections IN/OUT | Flow rate m³/h | Pieces per package |
|--------------|------------|--|-------------------|-----------------------|
| KT100 | Kit facile | 1" M threading for 3/4" pipe coupling | 2,0 | 8 |

OVERALL DIMENSIONS EXPRESSED IN MM



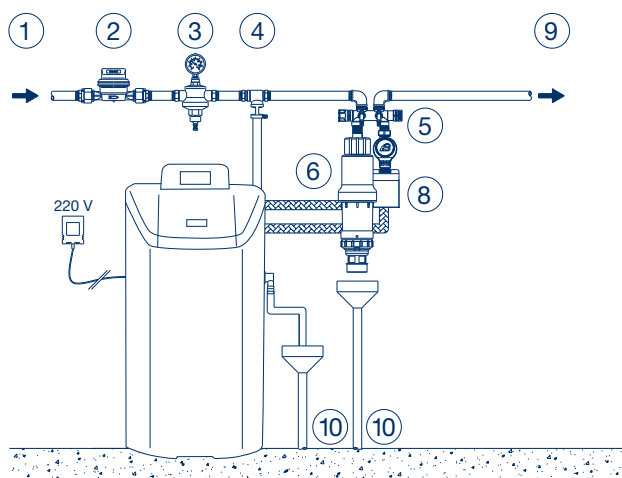
| Code | Width - A | Height - B | Depth - C |
|-------|-----------|------------|-----------|
| KT100 | 230 | 97 | 56 |

EXAMPLE OF INSTALLATION SCHEME



Legend

1. Raw water inlet;
2. Main water meter;
3. Pressure reducer;
4. Disconnector;
5. KIT FACILE;
6. BravoFIL filter;
7. MiniDUE dosing pump;
8. Treated water outlet;
9. Discharge.



Legend

1. Raw water inlet;
2. Main water meter;
3. Pressure reducer;
4. Disconnector;
5. KIT FACILE;
6. BravoFIL filter;
7. ASTREA water softener;
8. MiniDUE dosing pump;
9. Treated water outlet;
10. Discharge.

GUIDELINES FOR CORRECT MAINTENANCE

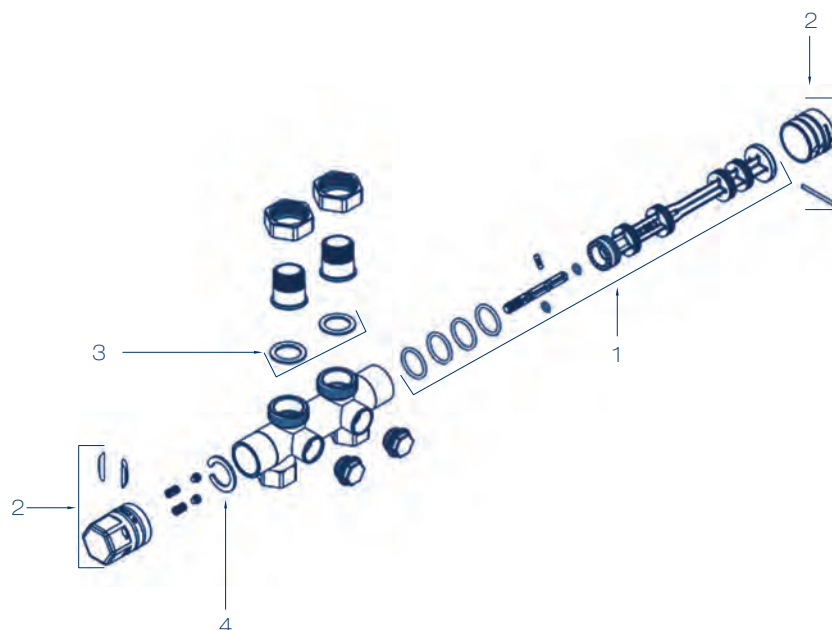


The correct operation and duration of the equipment over time depend on correct installation, proper use and methodical application of the maintenance instructions supplied.

| First year | Second year | Third year | Fourth year | Fifth year |
|---|---|---|---|---|
| O-RING | O-RING | O-RING | O-RING | O-RING |
| Check tightness, in case of leakage change | Check tightness, in case of leakage change | Check tightness, in case of leakage change | Check tightness, in case of leakage change | Check tightness, in case of leakage change |
| SANITATION INTERVENTION | SANITATION INTERVENTION | SANITATION INTERVENTION | SANITATION INTERVENTION | SANITATION INTERVENTION |
| Annually or for periods of inactivity exceeding 30 days | Annually or for periods of inactivity exceeding 30 days | Annually or for periods of inactivity exceeding 30 days | Annually or for periods of inactivity exceeding 30 days | Annually or for periods of inactivity exceeding 30 days |

RECOMMENDED SPARE PARTS

| Pos. | Code | Description | Q.ty |
|------|-----------------|---------------------------------------|------|
| 1 | 99021001 | Selector shaft assembly (n° 9 pieces) | 1 |
| 2 | 99021003 | Knobs assembly (n° 5 pieces) | 1 |
| 3 | 18022001 | 1" gasket for ¾" shank (n° 2 pieces) | 1 |
| 4 | 01021003 | Seiger | 1 |



CONSUMABLES AND MAINTENANCE

| Code | Description | Q.ty |
|-----------------|--|------|
| 48170005 | KIT SANITY Sanitizing product for sanitation processes 1 Kg. can - 4 Kg. pack | 1 |
| 48105016 | PEROXIDE ANALYSIS KIT for KIT SANITY The kit allows you to check whether the sanitation was done correctly | 1 |
| 48500007 | Food grade silicone suitable for the lubrication of mechanical parts and o.rings | 1 |

OUR PACK PROPOSAL

For your saving



BRAVOMIX DUE PACK

| Code | Pack composition | | | | Pieces for package |
|-----------------|--------------------------|--|-----------------------------------|---------------------------------|--------------------|
| | | Filter | Pump | | |
| 56022052 | Kit Facile cod. KT100 | BravoDue att. ¾" cod. FT320 | Minidue att. ¾" cod. PM011S | Connection kit cod. 99022023 | 1 |



BRAVOMIX PACK

| Code | Pack composition | | | | Pieces for package |
|-----------------|--------------------------|--|-----------------------------------|---------------------------------|--------------------|
| | | Filter | Pump | | |
| 56022054 | Kit Facile cod. KT100 | BravoFil att. ¾" cod. FT020 | Minidue att. ¾" cod. PM011S | Connection kit cod. 99022023 | 1 |



Connection kit - Not sold separately

PRODUCTS DOSAGE

Mechanical and electronic volumetric dosing pumps MiniDUE and BravaDOS are perfect to dose small quantities of anti-scaling anti-corrosive product – AcquaSIL® range. The dosage occurs in a proportional manner into the hydraulic circuits for the protection of equipment (boilers, kettles, washing machines, dishwashers, etc.).

AcquaSIL® line is a solution of food-grade mineral salts composed of raw materials that comply with the treatment of water intended for human consumption. These salts are dosed in the quantity required by current international regulations. MiniDUE and BravaDOS are the only valid solution for dosing anticorrosive and anti-encrusting polyphosphates in domestic and technological applications. The Technical Standards in force (EU 2020/2184, EN 14812, UNI 8065, UNI 9182 and UNI EN 806-2) describe and prescribe a chemical conditioning treatment.

The equipment is made with materials compliant with the D.M. n. 174/04 ("Materials suitable for the treatment of water intended for human consumption").





- **ACQUASIL® LINE**
ANTI-SCALING AND ANTI-CORROSIVE FOR DRINKING WATER



- **PROPORTIONAL VOLUMETRIC DOSING PUMPS**

FOR THE DOSAGE OF THE ACQUASIL® LINE,
ANTI-CORROSIVE ANTI-SCALING PRODUCT SUITABLE FOR THE
TOTAL PROTECTION OF THE HEALTH RANGE, FOR THE PROTECTION
OF WALL-MOUNTED AND BUILT-IN BOILERS

MINIDUE 360

Compact volumetric dosing pump



- ✓ self-priming, with injection valve that also acts as a non-return valve
- ✓ universal 'dima' attachment
- ✓ fully mechanical operation
- ✓ precise dosage, effective treatment with AcquaSIL 2/15®

CHARACTERISTICS

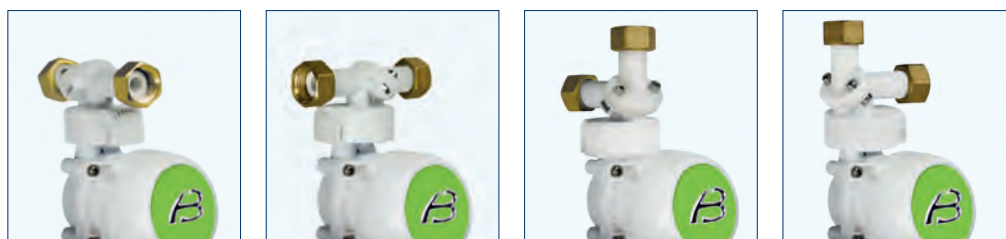
MiniDUE 360 is the new mechanical volumetric dosing pump for dosing AcquaSIL 2 / 15®, an anticorrosive anti-scale product, with a revolutionary template fixing designed to satisfy any installations need and simplifying and reducing installation times.

MiniDUE 360 is made with body and connection plate in plastic material; template fixing parts in plastic material with brass ring nuts and nuts.

AcquaSIL 2/15® product is supplied in disposable bags of gr. 250 or of 1 kg, to be connected directly to the pump body or to be used with the remote kit connection provided with the standard product.

MiniDUE 360 with the dosing of polyphosphate-based products, even at very low concentrations, will prevent the formation of limescale and corrosion in the hot water distribution lines.

For maintenance and sanitation interventions, please contact the industry professionals.



New dima attachment, versatility of installation in any configuration



First AcquaSIL 2/15® refill and remote kit supplied

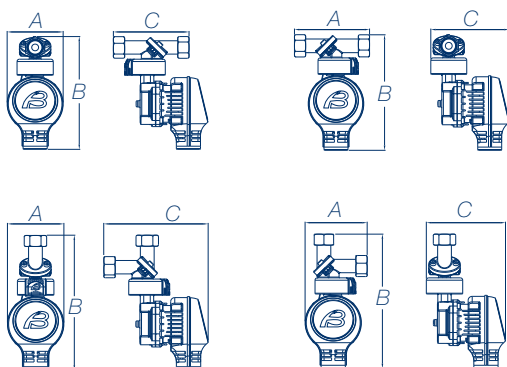
WHAT WE SUPPLY

MiniDUE 360 is placed inside a smooth cardboard box.

The standard supply includes: MiniDUE 360 dosing pump, 250 g AcquaSIL 2/15® refill, remote installation kit, DIMA 360 swivelling connection ("template" brass connection for quick & easy installation), and instructions manual.

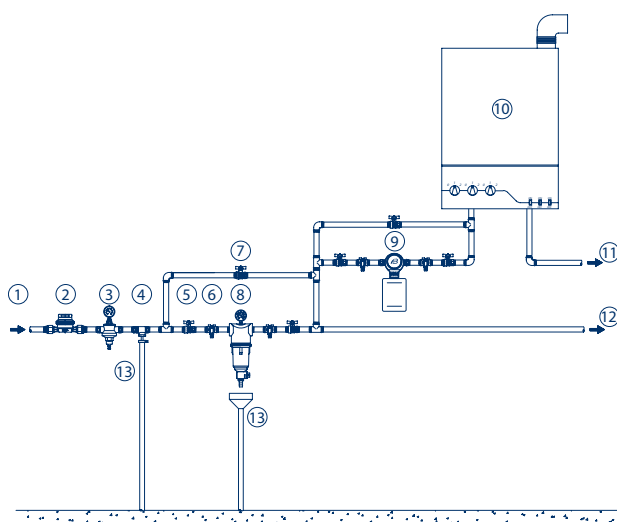
| Code | Connections | Flow rate m³/h | Min/max pressure bar | Pieces per package | Kg. per package |
|--------|-------------|-------------------|-------------------------|-----------------------|--------------------|
| PM007S | ½" F | 0,8 | 1,5 - 10 | 24 | 21,0 |

OVERALL DIMENSIONS EXPRESSED IN MM



| Code | Weidth - A | Height - B | Depth - C |
|--------|------------|------------|-----------|
| PM007S | 70 | 144 | 94 |
| | 94 | 144 | 98 |
| | 70 | 171 | 101 |
| | 77 | 171 | 98 |

EXAMPLE OF INSTALLATION SCHEME



Legend

1. Raw water inlet;
2. General counter;
3. Pressure reducer;
4. Disconnecter;
5. Shut-off valve;
6. Sampling tap;
7. By-pass valve;
8. Filter;
9. MiniDUE dosing pump;
10. Boiler;
11. Hot water outlet;
12. Cold water outlet;
13. Discharge.

GUIDELINES FOR CORRECT MAINTENANCE

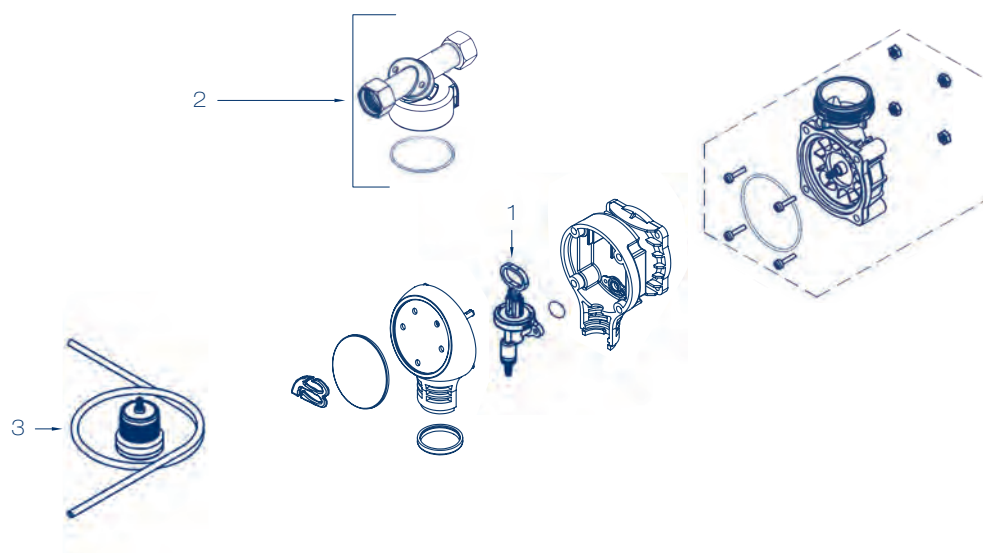


The correct operation and duration of the equipment over time depend on correct installation, proper use and methodical application of the maintenance instructions supplied.

| First year | Second year | Third year | Fourth year | Fifth year |
|--|--|--|--|--|
| CHAMBER ASSEMBLY Clean or lubricate with food grade silicone | CHAMBER ASSEMBLY Clean or lubricate with food grade silicone | CHAMBER ASSEMBLY Replace | CHAMBER ASSEMBLY Clean or lubricate with food grade silicone | CHAMBER ASSEMBLY Clean or lubricate with food grade silicone |
| SANITATION INTERVENTION Annually or for periods of inactivity longer than 30 days | SANITATION INTERVENTION Annually or for periods of inactivity longer than 30 days | SANITATION INTERVENTION Annually or for periods of inactivity longer than 30 days | SANITATION INTERVENTION Annually or for periods of inactivity longer than 30 days | SANITATION INTERVENTION Annually or for periods of inactivity longer than 30 days |

RECOMMENDED SPARE PARTS

| Pos. | Code | Description | Q.ty |
|------|-----------------|--------------------------------|------|
| 1 | 99006021 | Dosing chamber assembly 1/2" | 1 |
| 2 | 99006006 | "Dima 360" connection assembly | 1 |
| 3 | 99006020 | Remote kit assembly | 1 |



CONSUMABLES AND MAINTENANCE

| Code | Description | Q.ty |
|-----------------|--|------|
| 48170005 | KIT SANITY Sanitizing product for sanitation processes 1 Kg. can - 4 Kg. pack | 1 |
| 48105016 | PEROXIDE ANALYSIS KIT for KIT SANITY The kit allows you to check whether the sanitation was done correctly | 1 |
| 48500007 | Food grade silicone suitable for the lubrication of mechanical parts and o.rings | 1 |
| PC100 | AcquaSIL 2/15® - anti-scale anti-corrosion product Box with n° 4 refill (250 gr. / each) | 1 |
| PC104 | AcquaSIL 2/15® - anti-scale anti-corrosion product Box with n° 1 refill (1 Kg.) | 1 |

MINIDUE OTTONE

Compact volumetric dosing pump



- ✓ self-priming, with injection valve that also acts as a non-return valve
- ✓ fully mechanical operation
- ✓ precise dosage, effective treatment with AcquaSIL 2/15®

CHARACTERISTICS

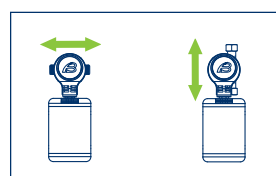
Range of new mechanical volumetric dosing pumps for dosing AcquaSIL 2/15®, anti-corrosion anti-scale product, pump equipped with horizontal or vertical connection.

MiniDUE OTTONE is made with a brass attachment plate and a plastic pump body; in the MiniDUE version it is supplied with nuts and tangs for hydraulic installation;

AcquaSIL 2/15® product is supplied in disposable bags of gr. 250 or of 1 kg, to be connected directly to the pump body or to be used with the remote kit connection provided with the standard product.

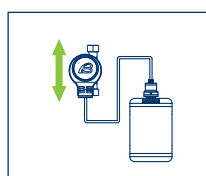
MiniDUE OTTONE with the dosage of products based on polyphosphates, even at very low concentrations, will prevent the formation of limescale and corrosion in the hot water distribution lines.

For maintenance and sanitation interventions, please contact the industry professionals .



PM002S PM003/2S

Version with bag attached to the pump body



PM003/2S

Version with remote bag



Brass outer F



First AcquaSIL 2/15® refill and remote kit supplied

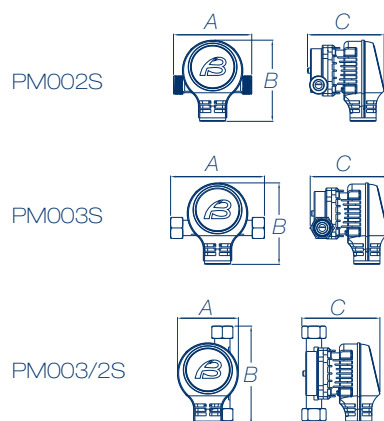
WHAT WE SUPPLY

MiniDUE OTTONE is placed inside a smooth cardboard box.

The standard supply includes: MiniDUE OTTONE dosing pump, 250 g AcquaSIL 2/15® refill, remote installation kit, instructions manual.

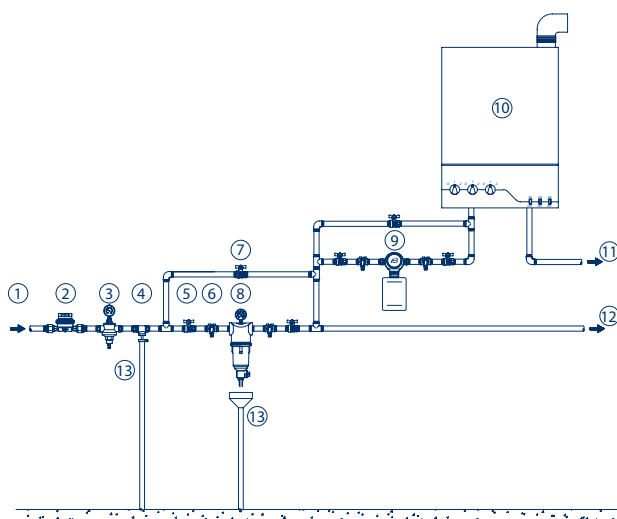
| Code | Connections | Flow rate m³/h | Min/max pressure bar | Pieces per package | Kg. per package |
|----------|-------------|-------------------|-------------------------|-----------------------|--------------------|
| PM002S | ½" M | 1,2 | 1,5 - 10 | 24 | 18 |
| PM003S | ½" F | 1,2 | 1,5 - 10 | 24 | 20,4 |
| PM003/2S | ½" F | 1,2 | 1,5 - 10 | 24 | 20,4 |

OVERALL DIMENSIONS EXPRESSED IN MM



| Code | Weidth - A | Height - B | Depth - C |
|----------|------------|------------|-----------|
| PM002S | 90 | 92 | 88 |
| PM003S | 108 | 92 | 89 |
| PM003/2S | 70 | 112 | 90 |

EXAMPLE OF INSTALLATION SCHEME



Legend

1. Raw water inlet;
2. General counter;
3. Pressure reducer;
4. Disconnector;
5. Shut-off valve;
6. Sampling tap;
7. By-pass valve;
8. Filter;
9. MiniDUE dosing pump;
10. Boiler;
11. Hot water outlet;
12. Cold water outlet;
13. Discharge.

GUIDELINES FOR CORRECT MAINTENANCE

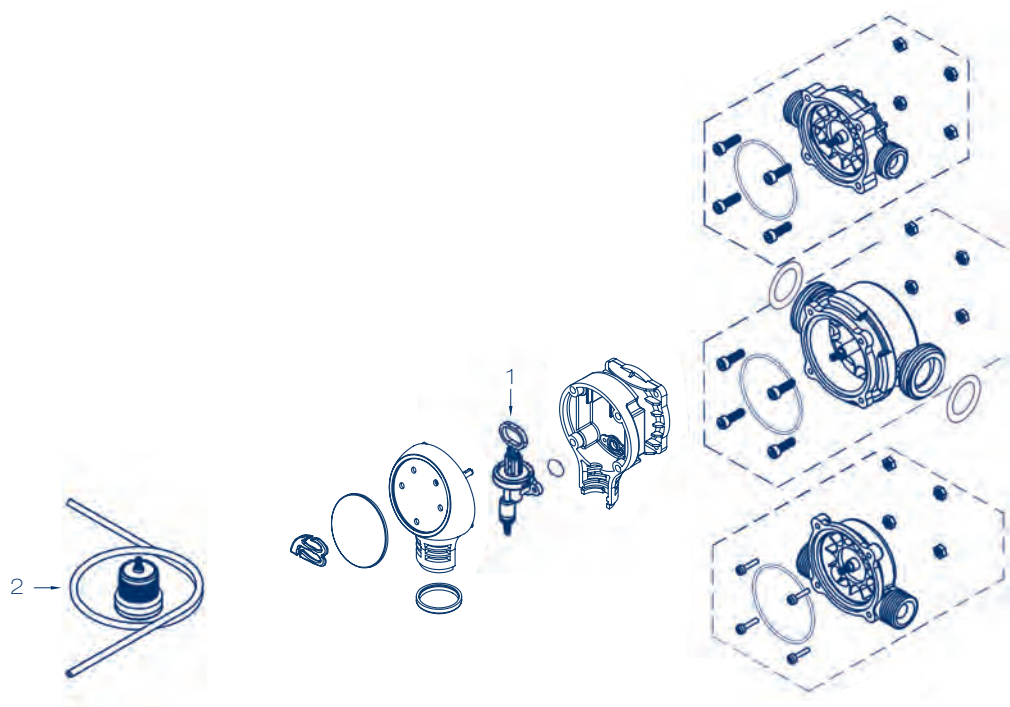


The correct operation and duration of the equipment over time depend on correct installation, proper use and methodical application of the maintenance instructions supplied.

| First year | Second year | Third year | Fourth year | Fifth year |
|--|--|--|--|--|
| CHAMBER ASSEMBLY Clean or lubricate with food grade silicone | CHAMBER ASSEMBLY Clean or lubricate with food grade silicone | CHAMBER ASSEMBLY Replace | CHAMBER ASSEMBLY Clean or lubricate with food grade silicone | CHAMBER ASSEMBLY Clean or lubricate with food grade silicone |
| SANITATION INTERVENTION Annually or for periods of inactivity longer than 30 days | SANITATION INTERVENTION Annually or for periods of inactivity longer than 30 days | SANITATION INTERVENTION Annually or for periods of inactivity longer than 30 days | SANITATION INTERVENTION Annually or for periods of inactivity longer than 30 days | SANITATION INTERVENTION Annually or for periods of inactivity longer than 30 days |

RECOMMENDED SPARE PARTS

| Pos. | Code | Description | Q.ty |
|------|-----------------|------------------------------|------|
| 1 | 99006021 | Dosing chamber assembly 1/2" | 1 |
| 2 | 99006020 | Remote kit assembly | 1 |



CONSUMABLES AND MAINTENANCE

| Code | Description | Q.ty |
|-----------------|--|------|
| 48170005 | KIT SANITY Sanitizing product for sanitation processes 1 Kg. can - 4 Kg. pack | 1 |
| 48105016 | PEROXIDE ANALYSIS KIT for KIT SANITY The kit allows you to check whether the sanitation was done correctly | 1 |
| 48500007 | Food grade silicone suitable for the lubrication of mechanical parts and o.rings | 1 |
| PC100 | AcquaSIL 2/15® - anti-scale anti-corrosion product Box with n° 4 refill (250 gr. / each) | 1 |
| PC104 | AcquaSIL 2/15® - anti-scale anti-corrosion product Box with n° 1 refill (1 Kg.) | 1 |

MINIDUE 3/4

Compact volumetric dosing pump



- ✓ self-priming, with injection valve that also acts as a valve of no return
- ✓ suitable for installation upstream of the treatment systems of the entire sanitary line

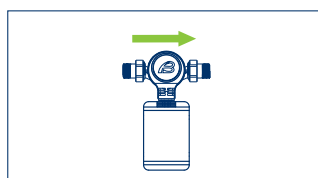
CHARACTERISTICS

Range of new mechanical volumetric dosing pumps for dosing AcquaSIL 2/15®, anti-corrosion anti-scale product, pump equipped with horizontal or vertical connection. MiniDUE 3/4 is made with a brass attachment plate and a plastic pump body; in the MiniDUE version it is supplied with nuts and tangs for hydraulic installation;

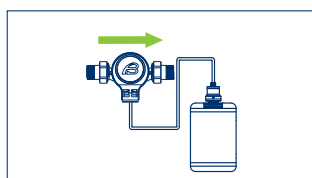
AcquaSIL 2/15® product is supplied in disposable bags of gr. 250 or of 1 kg, to be connected directly to the pump body or to be used with the remote kit connection provided with the standard product.

MiniDUE 3/4 with the dosage of products based on polyphosphates, even at very low concentrations, will prevent the formation of limescale and corrosion in the hot water distribution lines.

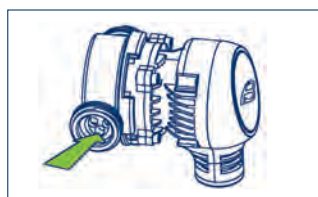
For maintenance and sanitation interventions, please contact the industry professionals.



Version with bag attached to the pump body



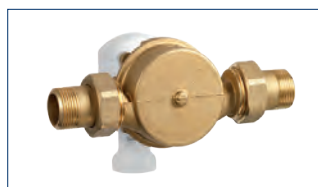
Version with remote bag



Attention: entry only from the side of the 3 holes



Unscrew the screw, rotate and change the water inlet/outlet direction



Brass counter tangs and nuts supplied



First AcquaSIL 2/15® refill and remote kit supplied

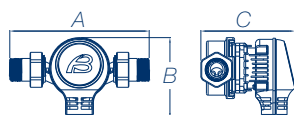
WHAT WE SUPPLY

MiniDUE 3/4 is placed inside a smooth cardboard box.

The standard supply includes: MiniDUE 3/4 dosing pump, 250 g AcquaSIL 2/15® refill, remote installation kit, instructions manual.

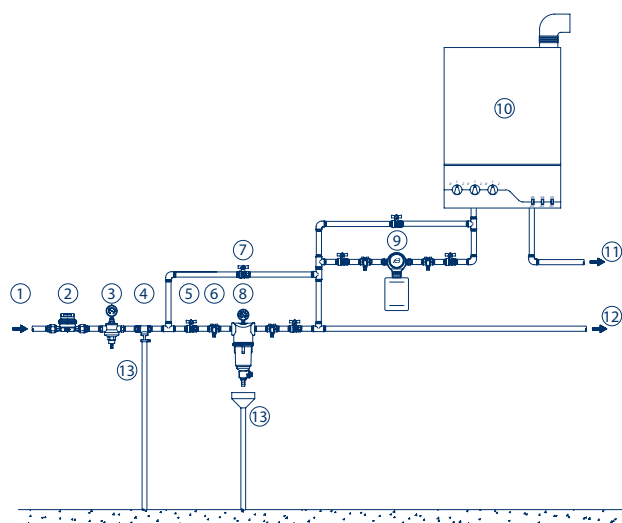
| Code | Connections | Flow rate m ³ /h | Min/max pressure bar | Pieces per package | Kg. per package |
|--------|-------------|--------------------------------|-------------------------|-----------------------|--------------------|
| PM011S | ¾" M | 1,8 | 1,5 - 10 | 24 | 26,4 |

OVERALL DIMENSIONS EXPRESSED IN MM



| Code | Weidth - A | Height - B | Depth - C |
|--------|------------|------------|-----------|
| PM011S | 164 | 94 | 111 |

EXAMPLE OF INSTALLATION SCHEME



Legend

1. Raw water inlet;
2. General counter;
3. Pressure reducer;
4. Disconnecter;
5. Shut-off valve;
6. Sampling tap;
7. By-pass valve;
8. Filter;
9. MiniDUE dosing pump;
10. Boiler;
11. Hot water outlet;
12. Cold water outlet;
13. Discharge.

GUIDELINES FOR CORRECT MAINTENANCE

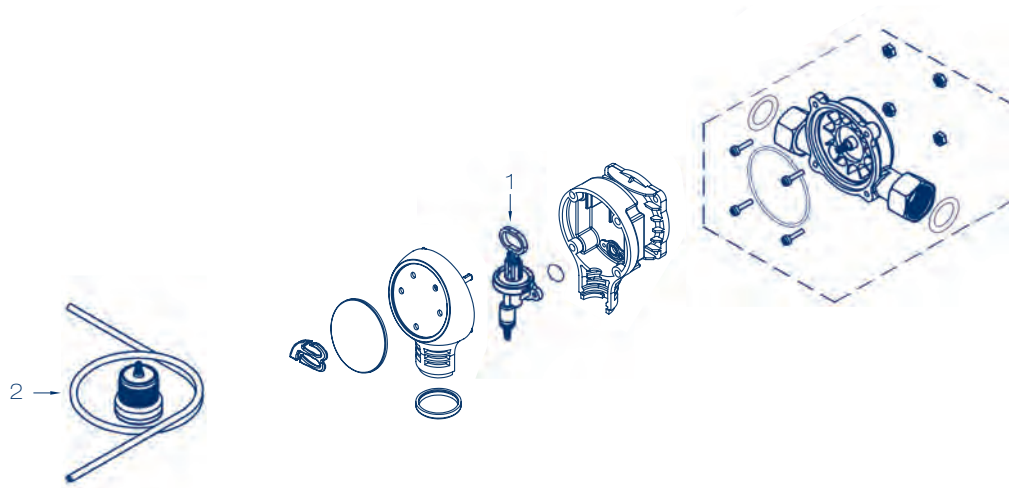


The correct operation and duration of the equipment over time depend on correct installation, proper use and methodical application of the maintenance instructions supplied.

| First year | Second year | Third year | Fourth year | Fifth year |
|--|--|--|--|--|
| CHAMBER ASSEMBLY Clean or lubricate with food grade silicone | CHAMBER ASSEMBLY Clean or lubricate with food grade silicone | CHAMBER ASSEMBLY Replace | CHAMBER ASSEMBLY Clean or lubricate with food grade silicone | CHAMBER ASSEMBLY Clean or lubricate with food grade silicone |
| SANITATION INTERVENTION Annually or for periods of inactivity longer than 30 days | SANITATION INTERVENTION Annually or for periods of inactivity longer than 30 days | SANITATION INTERVENTION Annually or for periods of inactivity longer than 30 days | SANITATION INTERVENTION Annually or for periods of inactivity longer than 30 days | SANITATION INTERVENTION Annually or for periods of inactivity longer than 30 days |

RECOMMENDED SPARE PARTS

| Pos. | Code | Description | Q.ty |
|------|-----------------|------------------------------|------|
| 1 | 99006028 | Dosing chamber assembly 3/4" | 1 |
| 2 | 99006020 | Remote kit assembly | 1 |



CONSUMABLES AND MAINTENANCE

| Code | Description | Q.ty |
|-----------------|--|------|
| 48170005 | KIT SANITY Sanitizing product for sanitation processes 1 Kg. can - 4 Kg. pack | 1 |
| 48105016 | PEROXIDE ANALYSIS KIT for KIT SANITY The kit allows you to check whether the sanitation was done correctly | 1 |
| 48500007 | Food grade silicone suitable for the lubrication of mechanical parts and o.rings | 1 |
| PC100 | AcquaSIL 2/15® - anti-scale anti-corrosion product Box with n° 4 refill (250 gr. / each) | 1 |
| PC104 | AcquaSIL 2/15® - anti-scale anti-corrosion product Box with n° 1 refill (1 Kg.) | 1 |

BRAVADOS

Electronic volumetric dosing pump



- ✓ self-priming
- ✓ the injection valve also acts as a non-return valve
- ✓ suitable for the complete treatment of up to 20 apartments of the entire sanitary line

CHARACTERISTICS

BravaDOS is an electronic volumetric proportional dosing pump for dosing AcquaSIL 20/40®, an anti-scaling anti-corrosion product. BravaDOS is made with a brass connection plate, pump body in plastic material. In models with 3/4" - 1" - 1 1/4" connections, nuts and tangs are supplied for hydraulic installation.

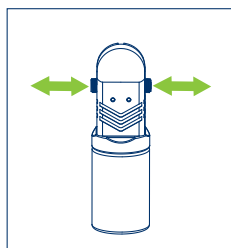
BravaDOS is designed for the dosage of products based on polyphosphates, even at low concentrations, to prevent the formation of limescale and corrosion on the sanitary line.

For maintenance and sanitation interventions, please contact the industry professionals.

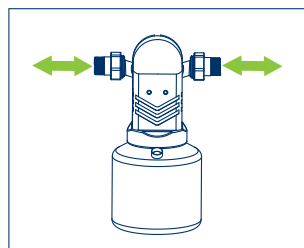


FUNCTION INDICATORS

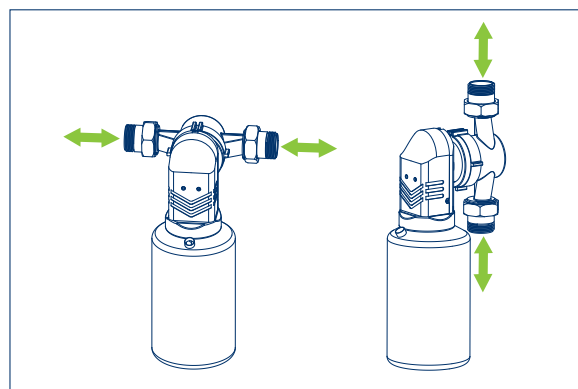
- green led on: voltage
- flashing green LED: AcquaSIL 20/40® product dosage
- red led on + acoustic signal: product reserve



PM010



PM012



PM014 - PM016

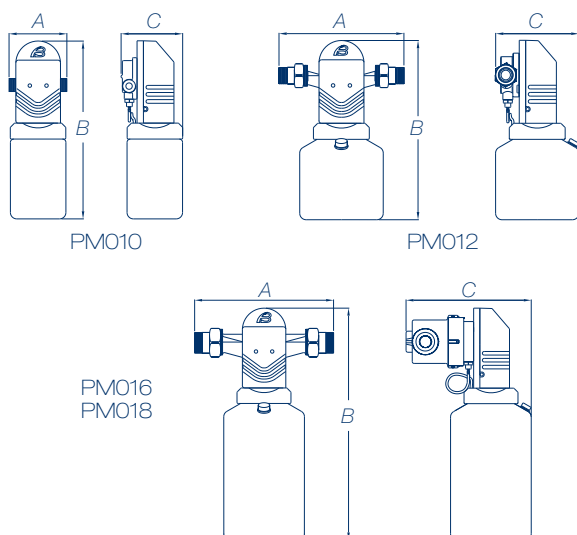
WHAT WE SUPPLY

BravaDOS is placed inside a smooth cardboard box.

The standard equipment includes: BravaDOS pump, nuts and tangs (for models PM012, PM014, PM016), instructions for use.

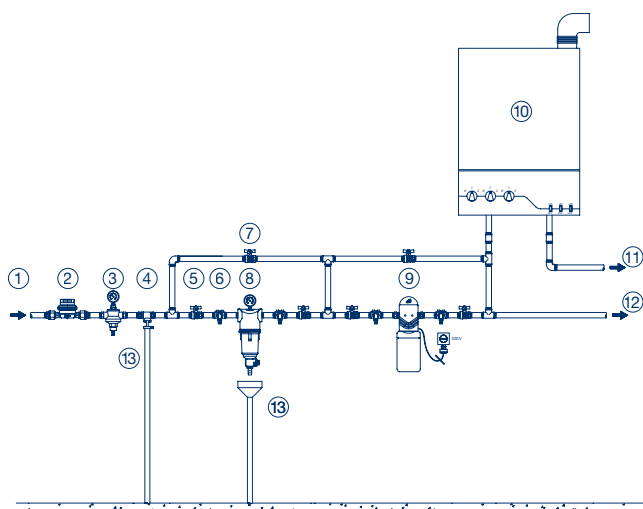
| Code | Connections | Flow rate m³/h | Min/max pressure bar | Pieces per package | Kg. per package |
|--------------|-------------|-------------------|-------------------------|-----------------------|--------------------|
| PM010 | 1/2" M | 1,5 | 1,5 - 6 | 6 | 6,3 |
| PM012 | 3/4" M | 3,0 | 1,5 - 6 | 6 | 7,5 |
| PM014 | 1" M | 4,5 | 1,5 - 6 | 4 | 13,7 |
| PM016 | 1 1/4" M | 6,0 | 1,5 - 6 | 4 | 14,5 |

OVERALL DIMENSIONS EXPRESSED IN MM



| Code | Weidth - A | Height - B | Depth - C |
|-------|------------|------------|-----------|
| PM010 | 90 | 282 | 97 |
| PM012 | 185 | 282 | 130 |
| PM014 | 230 | 380 | 202 |
| PM016 | 235 | 380 | 202 |

EXAMPLE OF INSTALLATION SCHEME



Legend

1. Raw water inlet;
2. General counter;
3. Pressure reducer;
4. Disconnector;
5. Shut-off valve;
6. Sampling tap;
7. By-pass valve;
8. Filter;
9. MiniDUE dosing pump;
10. Boiler;
11. Hot water outlet;
12. Cold water outlet;
13. Discharge.

GUIDELINES FOR CORRECT MAINTENANCE

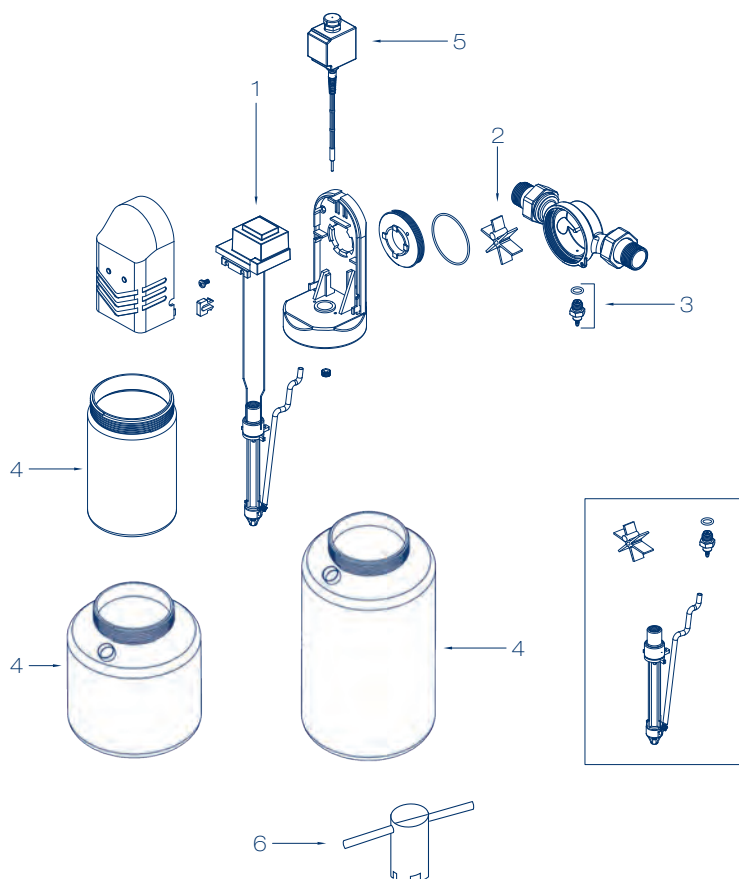


The correct operation and duration of the equipment over time depend on correct installation, proper use and methodical application of the maintenance instructions supplied.

| First year | Second year | Third year | Fourth year | Fifth year |
|--|--|--|--|--|
| CHAMBER ASSEMBLY Clean or lubricate with food grade silicone | CHAMBER ASSEMBLY Clean or lubricate with food grade silicone | CHAMBER ASSEMBLY Replace | CHAMBER ASSEMBLY Clean or lubricate with food grade silicone | CHAMBER ASSEMBLY Clean or lubricate with food grade silicone |
| INJECTION VALVE ASSEMBLY Clean or lubricate with food grade silicone | INJECTION VALVE ASSEMBLY Clean or lubricate with food grade silicone | INJECTION VALVE ASSEMBLY Replace | INJECTION VALVE ASSEMBLY Clean or lubricate with food grade silicone | INJECTION VALVE ASSEMBLY Clean or lubricate with food grade silicone |
| SANITATION INTERVENTION Annually or for periods of inactivity longer than 30 days | SANITATION INTERVENTION Annually or for periods of inactivity longer than 30 days | SANITATION INTERVENTION Annually or for periods of inactivity longer than 30 days | SANITATION INTERVENTION Annually or for periods of inactivity longer than 30 days | SANITATION INTERVENTION Annually or for periods of inactivity longer than 30 days |

RECOMMENDED SPARE PARTS

| Pos. | Code | Description | Q.ty | PM010 | PM012 | PM014 | PM016 |
|------|-----------------|--------------------------------------|------|-------|-------|-------|-------|
| 1 | 99005007 | Circuit assembly | 1 | ✓ | ✓ | ✓ | ✓ |
| | 99005002 | Impeller assembly | 1 | ✓ | | | |
| 2 | 99005010 | Impeller assembly | 1 | | ✓ | | |
| | 99005018 | Impeller assembly | 1 | | | ✓ | ✓ |
| 3 | 99006001 | Injection valve assembly | 1 | ✓ | ✓ | ✓ | ✓ |
| | 25005001 | 500 ml. tank with serigraphy | 1 | ✓ | | | |
| 4 | 25005002 | 1000 ml. tank with serigraphy | 1 | | ✓ | | |
| | 99005013 | 2500 ml. tank with label | 1 | | | ✓ | ✓ |
| 5 | 99005016 | Reel and shaft assembly | 1 | ✓ | ✓ | | |
| | 99005017 | Reel and shaft assembly | 1 | | | ✓ | ✓ |
| 6 | AV100 | Counter diaphragm disassembly wrench | | | ✓ | | |



CONSUMABLES AND MAINTENANCE

| Code | Description | Q.ty |
|-----------------|--|------|
| 48170005 | KIT SANITY Prodotto sanificante per processi di igienizzazione barattoli da 1 Kg. - confezione da Kg. 4 | 1 |
| 48105016 | PEROXIDE ANALYSIS KIT for KIT SANITY The kit allows you to check whether the sanitation was done correctly | 1 |
| 48500007 | Food grade silicone suitable for the lubrication of mechanical parts and o.rings | 1 |
| PC002 | AcquaSIL 20/40® - anti-scale anti-corrosion product Kg. 1 bottle | 1 |
| PC003 | AcquaSIL 20/40® - anti-scale anti-corrosion product Kg. 5 tank | 1 |

DOSANET P

Dosing station



✓ Products to use: AcquaSIL® Line

CHARACTERISTICS

Dosanet P dosing station consisting of an electromagnetic pump with digital signal (pulse emitter counter) proportional dosing system and knob-controlled adjustment - HDPE tank equipped with suction sprayer and assembled level probe, suitable for storing various types of chemical products - threaded counter for cold drinking water (up to 30°C) single jet (for 1/2" and 3/4") and multiple jet (for gauges up to 2") or WE axial swirl flanged counter.

Flanged DN UNI PN 10/16 Bar for cold water up to 30°C.

APG pump data: min/max flow rate l/h 4-8 - min/max pressure 2-12 Bar - max dosing frequency pulse/min 160 - supply voltage: 230 V 50/60 Hz



APG diaphragm dosing pump



CB pulse counter



WE pulse counter

APG - DIAPHRAGM DOSING PUMP

| Code | Model | Pressure Bar | Flow rate lt/h | Connections mm | Frequencies imp/min | Gasket kit |
|--------------|------------|--------------|----------------|----------------|---------------------|------------|
| PM062 | APG 603 HP | 12-10-8-2 | 4-5-6-8 | 4/6 | 160 | Kit in PVC |

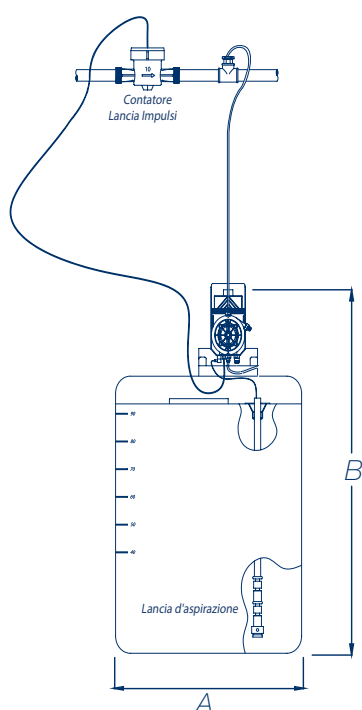
COMPLETE TANK

| Code | Model | Volume lt |
|-----------------|----------------------------|-----------|
| SD110050 | SER 60 COMPLETE assembled | 60 |
| SD110100 | SER 120 COMPLETE assembled | 120 |
| SD110200 | SER 220 COMPLETE assembled | 220 |
| SD110300 | SER 325 COMPLETE assembled | 325 |

CB - WE PULSE EMITTER COUNTERS

| Code | Model | Connections | Impulses per liters | Wheelbase mm | Nominal flow rate m ³ /h |
|-------------------|--|-------------|-----------------------|--------------|-------------------------------------|
| 9900400001 | CB | 1/2" | 4 | 110 | 1,5 |
| 9900400002 | CB | 3/4" | 4 | 130 | 2,5 |
| 9900400003 | CB | 1" | 4 | 260 | 3,5 |
| 9900400004 | CB | 1"1/4 | 4 | 260 | 5 |
| 9900400005 | CB | 1"1/2 | 4 | 300 | 10 |
| 9900400015 | CB | 2" | 4 | 300 | 15 |
| 9900424063 | WE | DN 50 | 1/100lt - 1/1000lt | 200 | 15 |
| 9900424066 | WE | DN 65 | 1/100lt - 1/1000lt | 200 | 25 |
| 9900424069 | WE | DN 80 | 1/100lt - 1/1000lt | 225 | 40 |
| 9900424072 | WE | DN 100 | 1/100lt - 1/1000lt | 250 | 60 |
| 9900424077 | WE | DN 150 | 1/1000lt - 1/100000lt | 300 | 150 |
| SC100 | Counter management card (up to 4 counters) | | | | |

OVERALL DIMENSIONS EXPRESSED IN MM



| Description | Tank size - A | Total height - B |
|---------------|---------------|------------------|
| Dosanet P 60 | 400 | 565 |
| Dosanet P 120 | 500 | 705 |
| Dosanet P 220 | 620 | 825 |
| Dosanet P 325 | 710 | 915 |

The presence of various substances can give water undesired characteristics: high hardness values, pH values other than neutral, presence of bacterial load, presence of dissolved oxygen. In these cases, it may be necessary to adjust the water characteristics by adding special chemicals through accurate and reliable dosing systems. The regulations in force concerning water treatment envisage that systems and equipment be protected by dosing specific chemical products. Acqua Brevetti's range of products for dosing purposes can satisfy the widest variety of application needs.

There are several chemicals that can be dosed in the water, and each of them has its own specific function.

Acqua Brevetti has a complete range of chemical products capable of satisfying all the needs of water treatment for civil and technological use.



ACQUASIL® 2/15

For all MiniDUE models

 VALECO



- ✓ hinders the formation of limestone deposits
- ✓ prevents corrosive phenomena of metal components
- ✓ effective with water with hardness between 5 °f and 35 °f
- ✓ it also gradually heals already encrusted circuits
- ✓ flexible disposable bags from gr. 250 or kg. 1
- ✓ supplied with a bag of gr. 250 in each MiniDUE pump package

CHARACTERISTICS

Aqueous solution of specific polyphosphates for drinking water with double protective anticorrosive and anti-scale effect - moderate hardness up to 35 ° f - instantaneous temperatures up to 80 ° C and storage temperatures up to 60 ° C.

| Code | Description | Kg. per package | Pieces per package |
|--------------|--|--------------------|-----------------------|
| PC100 | Box containing 4 refills of gr. 250 / each | 1 | 8 |
| PC104 | Box containing 1 refill of 1 Kg | 1 | 8 |

ACQUASIL® 20/40

For all BravaDOS models



- ✓ hinders the formation of limestone deposits
- ✓ prevents corrosive phenomena of metal components
- ✓ effective with water with hardness between 5 °f and 35 °f
- ✓ it also gradually heals already encrusted circuits

CHARACTERISTICS

Aqueous solution of specific polyphosphates for drinking water with double protective anticorrosive and anti-scale effect - moderate hardness up to 35 ° f - instantaneous temperatures up to 80 ° C and storage temperatures up to 60 ° C.

| Code | Description | Kg. per package | Pieces per package |
|--------------|--------------|--------------------|-----------------------|
| PC002 | Kg. 1 bottle | 1 | 8 |
| PC003 | Kg. 5 tank | 10 | 2 |

ACQUASIL® 20/40 L

For all BravaDOS models



- ✓ hinders the formation of limestone deposits
- ✓ prevents corrosive phenomena of metal components
- ✓ effective with water with hardness between 5 °f and 35 °f
- ✓ it also gradually heals already encrusted circuits

CHARACTERISTICS

Aqueous solution of specific polyphosphates for drinking water with double protective anticorrosive and antiscalant effect - low hardnesses up to 10 ° f - instant temperatures up to 80 ° C and storage temperatures up to 60 ° C.

| Code | Description | Kg. per package | Pieces per package |
|-------|-------------|--------------------|-----------------------|
| PC013 | Kg. 1 tank | 1 | 8 |
| PC075 | Kg. 5 tank | 10 | 2 |

ACQUASIL® 5/10

For dosing systems



- ✓ hinders the formation of limestone deposits
- ✓ prevents corrosive phenomena of metal components
- ✓ effective with water with moderate hardness up to 35 °f
- ✓ instant temperatures up to 80 °C
- ✓ storage temperatures up to 60 °C

CHARACTERISTICS

Aqueous solution of specific polyphosphates for drinking water with double protective anticorrosive and antiscalant effect - moderate hardness up to 35 ° f - instantaneous temperatures up to 80 ° C and storage temperatures up to 60 ° C.

| Code | Description | Kg. per package | Pieces per package |
|-------|-------------|--------------------|-----------------------|
| PC014 | Kg. 20 tank | 20 | 1 |

ACQUASIL® 5/10 L

For dosing systems



- ✓ hinders the formation of limestone deposits
- ✓ prevents corrosive phenomena of metal components
- ✓ low hardnesses up to 10 °f
- ✓ instant temperatures up to 80 °C
- ✓ storage temperatures up to 60 °C

CHARACTERISTICS

Aqueous solution of specific polyphosphates for drinking water with double protective anticorrosive and antiscalant effect - low hardnesses up to 10 °f - instant temperatures up to 80 °C and storage temperatures up to 60 °C.

| Code | Description | Kg. per package | Pieces per package |
|-------|-------------|--------------------|-----------------------|
| PC015 | Kg. 20 tank | 20 | 1 |

*Treating water is
useful and convenient*

Distributed by



Rue des Foudriers, 26 - 7822 Ghislenghien - BELGIUM
Mail: info@valeco.be - Tel: +32(0)68 57 20 71